

CERTIFIED CORNER RECORDATION

Corner CW 1/16 S19 T. 30 N. R. 33 W. P.M.M. LINCOLN County

I. Record: 1893 Original G.L.O. Survey of the Fractional Subdivision of Township 30 North, Range 33 West, by Daniel P. Mumbrue

1978 Certificate of Survey No. 496 by Melvin D. Lauteren, Reg. No. 4232S: Reestablishes the SE sec. cor. S 19 by double proportion measurement and the S 1/4 S 19 by single proportion measurement.

1987 Certificate of Survey No. 1600 by Kenneth E. Davis, Reg. No. 4975S: Subdivides the NE1/4 and NW1/4 of section 19 and monuments the CW 1/16 of sec. 19 and with a 5/8 in. diam. by 24 ins. long rebar with yellow plastic cap marked K.E.D. 4975S.

1989 Certified Corner Recordation by Kenneth E. Davis, Reg. No. 4975S: Set a 5/8"x18" steel rebar with yellow P.V.C. cap marked KED 4975 S for CW 1/16 corner. From which I scribe and marked two new bearing trees.

A Douglas fir, 8 ins. daim., bears S21°W, 22.4 feet in distance, scribed CW 1/16 S 19 BT.

A Douglas fir, 8 ins. daim., bears N83°45'W, 18.5 feet in distance, scribed CW 1/16 S 19 BT.

Painted the face scribe and red bands around each bearing tree and attached a bearing tree sign on each

II. Found: A 5/8 in. diam. steel rebar, 2 ins. above ground with a yellow plastic cap marked KED 4975S.

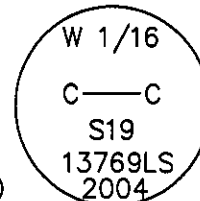
III. Accepted the position of the 5/8 in. diam. rebar for the CW 1/16 sec. 19 and replaced the yellow plastic cap with a 3 1/4 in. diam aluminum cap marked as shown.

From which:

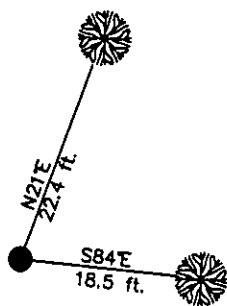
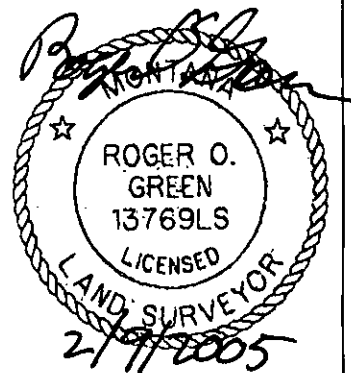
A fir, 9 ins. daim., bears N21°E, 22.4 ft. dist., marked with a healed face. (Record: S21°W)

A fir, 10 ins. daim., bears S84°E, 18.5 ft. dist., marked with a healed face. (Record: N83°45'W)

Painted red the faces of the bearing trees and painted 6 in. red bands around bearing trees. Attached Land Survey Monument and Bearing Tree signs.



Date of Fieldwork: 10/14/2004
Survey crew: Steve Boyer, Tom Hommel
Magnetic declination: 18° East assumed
Equipment used: Hand compass and loggers tape
U.S. Forest Service, Supervisors Office, 1101 Hwy. 2 West, Libby, MT 59923 (406) 293-6211



NOT TO SCALE

SKETCH OF CORNER

CERTIFICATION
I, Thomas M. Hommel 10890LS
certify the information shown herein is true and correct.

Thomas M. Hommel
Signature Ground Party Chief

I, Roger O. Green
certify that this Corner Record correctly represents work performed by me or under my direction in compliance with the "Corner Recordation Act" (79-22-101, et seq., M.C.A.)

Roger O. Green
Signature of Surveyor & Seal

Date: 10/14/2004 Reg. No. 13769LS

Employer: U. S. Forest Service

Office of Clerk and Recorder, County of Lincoln This "corner

rec 182250 BOOK: CCR CC&R'S PAGE: 10775 Pages: 1

STATE OF MONTANA LINCOLN COUNTY

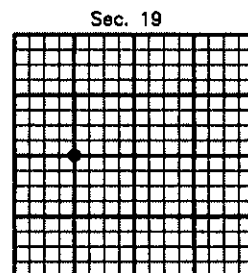
was RECORDED: 02/02/2005 9:12 KOI: CC&R'S

by CORAL M. CUMMINGS CLERK AND RECORDER

FEE: \$0.00

TO: FILED

BY: Bonnie J. J. Deputy



Cross Index No. P-2 T. 30N. R. 33W. P.M., MT

Adopted July 1, 1981, Montana Board of Professional Engineers & Land Surveyors

● corner this sheet