

CERTIFIED CORNER RECORDATION

Corner NW 1/16 S19 T. 30 N. R. 33 W. P.M.M. LINCOLN County

I. Record: 1893 Original G.L.O. Survey of the Fractional Subdivision of Township 30 North, Range 33 West, by Daniel P. Mumbrue

1978 Certificate of Survey No. 496 by Melvin D. Lauteren, Reg. No. 4232S: Reestablishes the SE sec. cor. S 19 by double proportion measurement and the S 1/4 S 19 by single proportion measurement.

1987 Certificate of Survey No. 1600 by Kenneth E. Davis, Reg. No. 4975S: Subdivides the NE1/4 and NW1/4 of section 19 and monuments the NW 1/16 of sec. 19 and with a 5/8 in. diam. by 24 ins. long rebar with yellow plastic cap marked K.E.D. 4975S.

1989 Certified Corner Recordation by Kenneth E. Davis, Reg. No. 4975S: Set a 5/8"x18" steel rebar with yellow P.V.C. cap marked KED 4975 S for NW 1/16 corner. From which I scribe and marked two new bearing trees.

A larch, 7 ins. daim., bears N87°30'E, 56.4 feet in distance, scribed NW 1/16 S 19 BT.

A lodgepole pine, 7 ins. daim., bears N0°30'W, 27.2 feet in distance, scribed NW 1/16 S 19 BT.

Painted the face scribe and red bands around each bearing tree and attached a bearing tree sign on each

1994 P. F. Plat No. 5067, Cadillac Acres, by Kenneth E. Davis, Reg. No. 4975S: References the NW 1/6 for sec. 19 set by Davis.

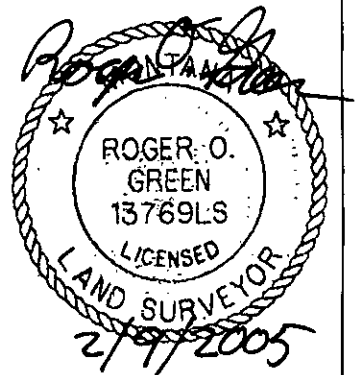
II. Found: A 5/8 in. diam. steel rebar, in the center of the paved forest service road #473, set flush with the pavement, no cap. Accepted the position of the 5/8 in. diam. rebar for the NW 1/16 sec. 19 and left the rebar as found.

From which:

A pine, 10 ins. daim., bears SOUTH, 27.2 ft. dist., marked with a pitched face. (Record: N0°30'W)

A larch, 8 ins., daim., bears S87°W, 56.4 ft. dist., marked with a healed face. (Record: N87°30'E)

III. Painted red the faces of the bearing trees and painted 6 in. red bands around bearing trees. Attached Land Survey Monument and Bearing Tree signs.



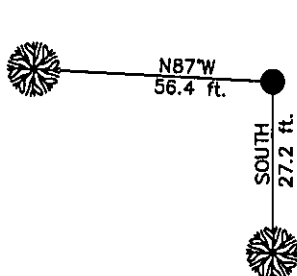
Date of Fieldwork: 10/14/2004

Survey crew: Steve Boyer, Tom Hommel

Magnetic declination: 18° East assumed

Equipment used: Hand compass and loggers tape

U.S. Forest Service, Supervisors Office, 1101 Hwy. 2 West, Libby, MT 59923 (406) 293-6211



NOT TO SCALE

SKETCH OF CORNER

CERTIFICATION

I, Thomas M. Hommel 10800LS
certify the information shown here is true and correct.

Thomas M. Hommel
Signature Ground Party Chief

I, Roger O. Green
certify that this Corner Record correctly represents work performed by me or under my direction in compliance with the "Corner Recordation Act" (70-22-101, et seq., M.C.A.)

Roger O. Green
Signature of Surveyor & Seal

Date: 10/14/2004 Reg. No. 13769LS

Employer: U. S. Forest Service

Office of Clerk and Recorder, County of Lincoln. This "corner

record" 182248 BOOK: CCR CC&R'S PAGE: 10773 Pages: 1

was not STATE OF MONTANA LINCOLN COUNTY —, in

book No RECORDED: 02/02/2005 9:08 KOI: CC&R'S —

CORAL M. CUMMINGS CLERK AND RECORDER

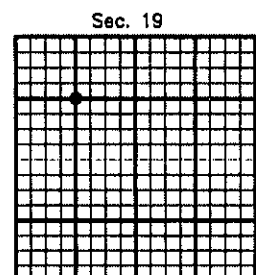
FEE: \$0.00

BY: Bonnie Lee deputy

TO: FILED

Cross Index No. 0-2 T. 30N. R. 33W. P.M., MT

Adopted July 1, 1981, Montana Board of Professional Engineers & Land Surveyors



• corner this sheet