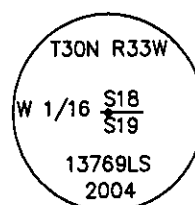


CERTIFIED CORNER RECORDATION

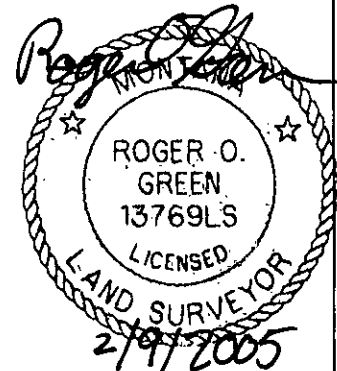
Corner W 1/16 S18 S19 T. 30 N. R. 33 W. P.M.M. LINCOLN County

- I. Record: 1893 Original G.L.O. Survey of the Fractional Subdivision of Township 30 North, Range 33 West, by Daniel P. Mumbrue:
- 1978 Certificate of Survey No. 496 by Melvin D. Lauteren, Reg. No. 4232S: Reestablishes the SE sec. cor. S 19 by double proportionate measurement and the S 1/2 S 19 by single proportionate measurement.
- 1987 Certificate of Survey No. 1600 by Kenneth E. Davis, Reg. No. 4975S: Subdivides the NE 1/4 and the NW 1/4 of section 19 and establishes a computed point for the W 1/16 between secs. 18 and 19.
- 1994 P.F. Plat No. 5067, Cadillac Acres, by Kenneth E. Davis, Reg. No. 4975S: Establishes and monuments the CN 1/16 and the NW 1/16 S 19 and monuments the W 1/16 between secs. 18 and 19 with a 5/8 in. diam. rebar, with a 1 1/4 in. diam. plastic cap stamped 4975-S.
- II. Found: A 5/8 in. daim. steel rebar, with a 1 1/4 in. diam. yellow plastic cap marked 4975S K.E.D. Accept the position of the found rebar as the position for the W 1/16 between secs. 18 and 19.
- III. Replaced the plastic cap with a 3 1/4 in. diam. aluminum cap marked as shown and establish two new bearing trees:

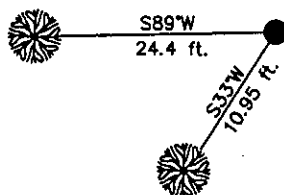
A douglas fir, 4 ins. diam., bears S33°W, 10.95 ft., mkd. W 1/16 S 19 BT.
A white pine, 6 ins. diam., bears S89°W, 24.4 ft., mkd. W 1/16 S 19 BT.



Set a 6 ft. galvanized steel guard post 3 ft. south and west with Land Survey Monument and Property Boundary decals attached. Painted the scribed faces red and a 6 in. red band around bearing trees and attached Land Survey Monument and Bearing Tree signs.



Date of Fieldwork: 10/14/2004
Survey crew: Steve Boyer, Tom Hommel
Magnetic declination: 18° East assumed
Equipment used: Hand compass and loggers tape
U.S. Forest Service, Supervisors Office, 1101 Hwy. 2 West, Libby, MT 59923 (406) 293-6211



NOT TO SCALE

SKETCH OF CORNER

CERTIFICATION

I, Thomas M. Hommel 10800LS
certify the information shown herein is true and correct.

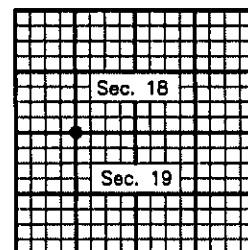
[Signature]
Signature Ground Party Chief

I, Roger O. Green
certify that this Corner Record correctly represents work performed by me or under my direction in compliance with the "Corner Recordation Act" (70-22-101, et seq., M.C.A.)

[Signature]
Signature of Surveyor & Seal

Date: 10/14/2004 Reg. No. 13769LS
Employer: U. S. Forest Service

Office of Clerk and Recorder, County of Lincoln This "corner record" was 182247 BOOK: CCR CC&R'S PAGE: 10772 Pages: 1
STATE OF MONTANA LINCOLN COUNTY
was noted o RECORDED: 02/02/2005 9:06 KOI: CC&R'S
book No. CORAL M. CUMMINGS CLERK AND RECORDER
FEE: \$0.00 BY: Bonnie Lill Deputy
TO: FILED



Cross Index No. N-2 T. 30N. R. 33W. P.M., MT
Adopted July 1, 1981, Montana Board of Professional Engineers & Land Surveyors

• corner this sheet