

CERTIFIED CORNER RECORDATION

Corner C 1/4 S19 T. 30 N. R. 33 W. P.M.M. LINCOLN County

- I. Record: 1893 Original G.L.O. Survey of the Fractional Subdivision of Township 30 North, Range 33 West, by Daniel P. Mumberue
1978 Certificate of Survey No. 496 by Melvin D. Lauteren, Reg. No. 4232S: Establishes the SE sec. cor. S 19 by double proportion measurement and the S 1/4 S 19 by single proportion measurement.
1987 Certificate of Survey No. 1600 by Kenneth E. Davis, Reg. No. 4975S: Subdivides the NE1/4 and NW1/4 of section 19 and monuments the C 1/4 of sec. 19 and with a 5/8 in. diam. by 24 ins. long rebar with yellow plastic cap marked K.E.D. 4975S.

II. Found: A 5/8 in. diam. steel rebar, 16 ins. below the ground. Accepted the position of the 5/8 in. diam. rebar for the C 1/4 sec. 19.

From which:

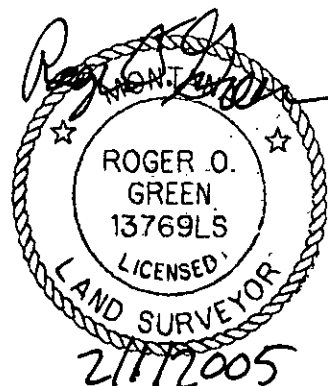
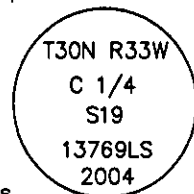
- A fir, 12 ins. daim., bears S85°W, 50.4 ft. dist., marked with a snow blaze and a location poster. (No Record)
- A fir, 18 ins. daim., bears N39°W, 46.8 ft. dist., marked with a snow blaze and a location poster. (No Record)

III. Replaced the 5/8 in. diam. rebar with a 2 1/2 in. diam. by 30 ins. long aluminum pipe, 24 ins. in the ground with a 3 1/4 in. diam. aluminum cap marked as shown. Buried the rebar inside the aluminum pipe and raised a collar of stone.

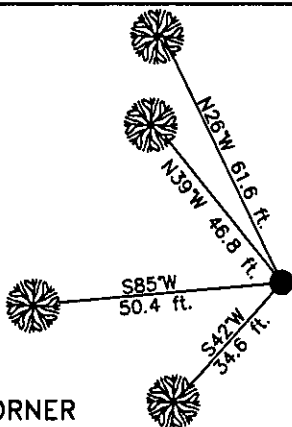
Establish two new bearing trees.

- A fir, 11 ins. daim., bears S42°W, 34.6 ft. dist., marked C 1/4 S19 BT.
- A fir, 15 ins. daim., bears N26°W, 61.6 ft. dist., marked C 1/4 S19 BT.

Painted red the faces of the bearing trees and painted 6 in. red bands around bearing trees. Attached Land Survey Monument and Bearing Tree signs.



Date of Fieldwork: 10/14/2004
 Survey crew: Steve Boyer, Tom Hommel
 Magnetic declination: 18' East assumed
 Equipment used: Hand compass and loggers tape
 U.S. Forest Service, Supervisors Office, 1101 Hwy. 2 West, Libby, MT 59923 (406) 293-6211



SKETCH OF CORNER

NOT TO SCALE

CERTIFICATION

I, Steven A. Boyer 9750LS
 certify the information shown herein is true and correct.
Steven A. Boyer
 Signature Ground Party Chief

I, Roger O. Green
 certify that this Corner Record correctly represents work performed by me or under my direction in compliance with the "Corner Recordation Act" (79-22-101, et seq., M.C.A.)
Roger O. Green
 Signature of Surveyor & Seal

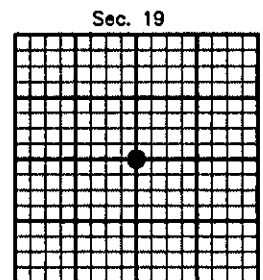
Date: 10/14/2004 Reg. No. 13769LS
 Employer: U. S. Forest Service

Office of Clerk and Recorder, County of Lincoln. This "corner

record" was filed f 182246 BOOK: CCR CC&R'S PAGE: 10771 Pages: 1
 was noted on the STATE OF MONTANA LINCOLN COUNTY
 book No. RECORDED: 02/02/2005 9:05 KOI: CC&R'S
CORAL M. CUMMINGS CLERK AND RECORDER
 FEE: \$0.00 BY: *Coral M. Cummings*
 TO: FILED

Cross Index No. P-3 T. 30N. R. 33W. P.M., MT

Adopted July 1, 1981, Montana Board of Professional Engineers & Land Surveyors



● corner this sheet