

CERTIFIED CORNER RECORDATION

Corner 1/4 S18 S19 T. 30 N. R. 33 W. P.M.M. LINCOLN County

- I. Record: 1893 Original G.L.O. Survey of the Fractional Subdivision of Township 30 North, Range 33 West, by Daniel P. Mumbrue; 38.27 chs. Set a post 3 ft. long, 3 ins. square, 24 ins. in the ground, for 1/4 Sec. Cor., marked 1/4 S on N. face; from which
A pine, 36 ins. diam., bears N60°E, 60 lks. distant, marked 1/4 S BT.
A fir, 8 ins. diam., bears S74 1/2°W, 14 lks. distant, marked 1/4 S BT.

1968 B.L.M. Remonumentation of Certain Corners in Township 30 North, Range 33 West, by Woodrow E. Damm, Joseph E. French, and Duane G. Lindenberg; The 1/4 sec. cor. of sections 18 and 19, as determined from the remains of the original SW. bearing tree.

At the corner point

Set an iron post, 30 ins. long, 2 1/2 ins. diam., 24 ins. in the ground, with brass cap mkd.

from which

A fir, 24 ins. diam., bears S74 1/2°W, 14 lks. dist., mkd. BT. (Record)

The new bearing trees:

A pine, 7 ins. diam., bears N15 1/2°E, 18 lks. dist., mkd. 1/4 S 18 BT.
A pine, 8 ins. diam., bears S70°W, 42 lks. distant, marked 1/4 S 19 BT.

Raise a mound of stone, 3 ft. diam., around the iron post.

1987 Certificate of Survey No. 1600 by Kenneth E. Davis, Reg. No. 4975S; References the 1/4 section corner between sections 18 and 19 as a found 3 1/4 in. brass cap.

1994 P.F. Plat No. 5067, Cadillac Acres by Kenneth E. Davis, Reg. No. 4975S; References the 1/4 section corner between secs. 18 and 19 as a found 3 1/4 in. BLM brass cap.

- II. Found: A 2 1/2 in. diam. iron pipe, 3 ins. above ground, with a 3 1/4 in. diam. BLM brass cap marked as shown above.

From which:

A pine, 14 ins. diam., bears S70°W, 27.7 ft. dist., mkd. with a healed face.

No evidence of the other bearing trees as the area has been heavily logged.

- III. Establish one new bearing tree:

A fir, 9 ins. diam., bears N10°E, 79.5 ft., mkd. 1/4 S 18 BT.

Set a 6 ft. galvanized steel guard post 3 ft. east with Land Survey Monument decal attached. Painted the exposed faces red and a 6 in. red band around bearing trees and attached Land Survey Monument and Bearing Tree signs.

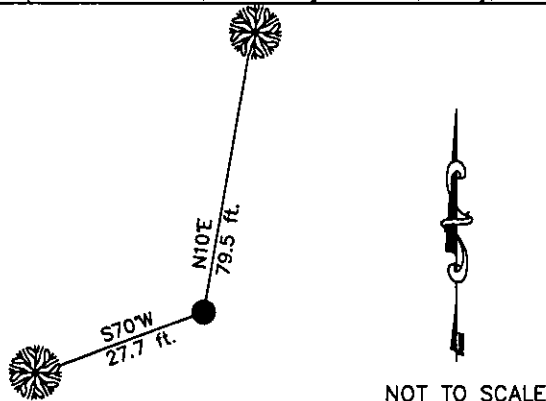
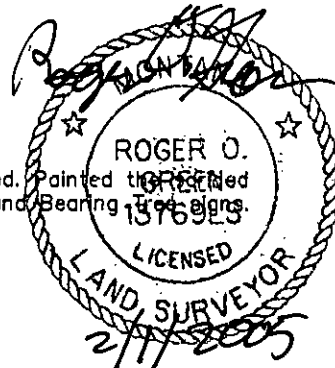
Date of Fieldwork: 8/2/2004

Survey crew: Tom Hommel

Magnetic declination: 18° East assumed

Equipment used: Hand compass and loggers tape

U.S. Forest Service, Supervisors Office, 1101 Hwy. 2 West, Libby, MT 59923 (406) 293-6211



SKETCH OF CORNER

NOT TO SCALE

CERTIFICATION
I, Thomas M. Hommel 10800LS
certify the information shown herein is true and correct.
Thomas M. Hommel
Signature Ground Party Chief
I, Roger O. Green
certify that this Corner Record correctly represents work performed by me or under my direction in compliance with the "Corner Recordation Act" (7b-22-101, et seq., M.C.A.)
Roger O. Green
Signature of Surveyor & Seal
Date: 8/5/2004 Reg. No. 13769LS
Employer: U. S. Forest Service

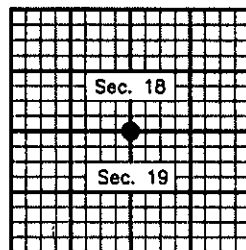
Office of Clerk and Recorder, County of Lincoln This "corner

record" was filed for record

was noted on the cross-index

book No. _____

182232 BOOK: CCR CC&R'S PAGE: 10757 Pages: 1
STATE OF MONTANA LINCOLN COUNTY
RECORDED: 02/02/2005 8:05 KOI: CC&R'S
CORAL M. CUMMINGS CLERK AND RECORDER
FEE: \$0.00 BY: Leanne S. Smith
TO: FILED



Cross Index No. N-03 T. 30N. R. 33W. P.M., MT

Adopted July 1, 1981, Montana Board of Professional Engineers & Land Surveyors

● corner this sheet