

**CERTIFIED CORNER RECORDATION**

Corner: N 1/16 Sec. 8, Twp. 30 N., R. 33 W., P.M.M.

Lincoln County

Record :

NONE

Found Evidence :

None.

Perpetuation :

Set a 5/8 inch dia. rebar 24 inches long, 20 inches in the ground with a 1 1/4 inch dia. plastic cap stamped: KED 4975 S.

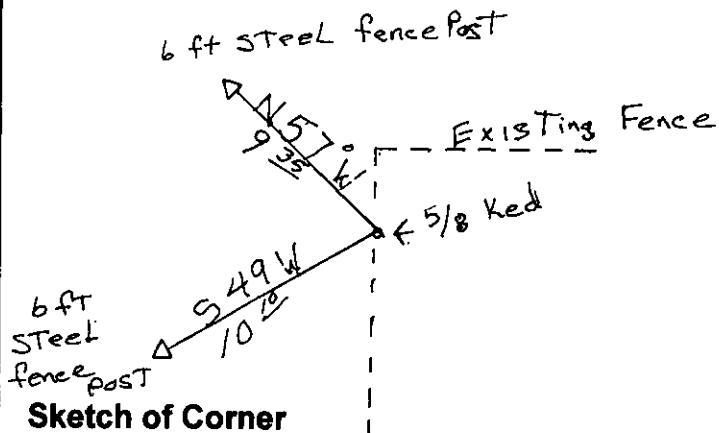
From which: I established the following bearing object:

A 6 ft. long steel fence post set 2 ft. in the ground Bears N 57° W 9.35 ft. dist.

A 6 ft. long steel fence post set 2 ft. in the ground Bears S 49° W 10.10 ft. dist.

Attached bearing tree tags to both posts.

Declination 18 °E

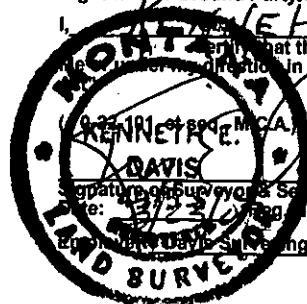


**CERTIFICATION**

I, **George Clark**  
certify the information shown herein is true and correct

Signature of Ground Party Chief

I, **Walter E. Davis**  
certify that this Corner Record correctly represents the true and correct location in compliance with the "Corner Record"



Section

Office of Clerk and Recorder, County of Lincoln  
This "corner record" was filed for record on 3/26/2002  
was noted on the cross-index plat and is assigned page No. 10559  
in book No. \_\_\_\_\_

County Official

Cross Index No. N 1/16 S 8 Twp. 30 N., R. 33 W., P.M.M.

● THIS CORNER

