

CERTIFIED CORNER RECORDATION

Corner 1/4 Secs. 30 & 31 T. 30 N. R. 33 W. P.M.M. LINCOLN County

I. Record:

1893 original record by Daniel P. Mumbrue: 39.04 chains, "Set a post 3 ft. long, 3 ins. square, 24 ins. in the ground, for 1/4 sec. cor., marked 1/4 S., on N. face; from which:

- A pine, 10 ins. diam., bears N67°E, 30 lks. distant marked 1/4 S BT.
- A pine, 8 ins. diam., bears S48 1/4°E, 26 lks. distant marked 1/4 S BT.

1965 BLM remonumentation record by Duane C. Lindenberg: The 1/4 sec. cor. of secs. 30 and 31, determined from the remains of the original bearing trees. At the corner point, set an iron post, 30 ins. long, 2 1/2 ins. diam., 26 ins. in the ground, with brass cap mkd. as shown below, from which:

The original bearing trees:

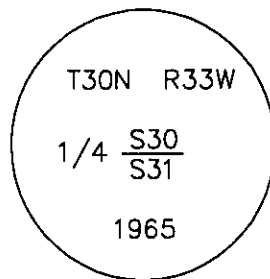
- A stump hole, bears N76°E, 30 lks. dist., with fallen log mkd. 1/4 S BT.
- A rotted stump, bears S48 1/4°E, 26 lks. dist., with fallen log, mkd. 1/4 S BT.

The new bearing trees:

- A cedar, 9 ins. diam., bears S2°E, 23 lks. dist., mkd. 1/4 S 31 BT.
- A fir, 12 ins. diam., bears N53 1/2°W, 19 lks. dist., mkd. 1/4 S 30 BT.

II. Found a 2 1/2 in. diam. iron pipe, 8 ins. above ground, with a 3 1/4 in. diam. brass cap mkd. as shown, from which:

- A cedar, 12 ins. diam., bears S2°E, 15.2 ft. dist., mkd. with visible scribe marks.
- A fir, 18 ins. diam., bears N60°W, 13.1 ft. dist. (side center) and 12.4 ft. dist. (face), mkd. with a healed face.



III. Set a 6 ft. galvanized steel guard post 1 ft. south, with Property Boundary and Land Survey Monument decals attached.

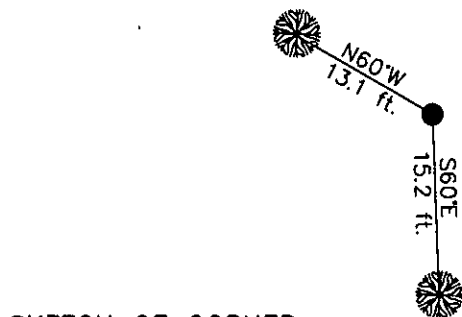
Date of Fieldwork: 6/21/2001

Survey crew: Steve Boyer, Tom Hommel

Magnetic declination: 20° East assumed

Equipment used: Hand compass and loggers tape

U.S. Forest Service, Supervisors Office, 1101 Hwy. 2 West, Libby, MT 59923 (406) 293-6211



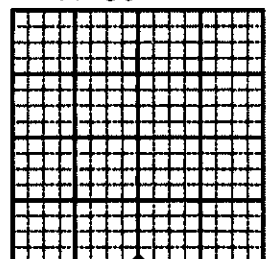
SKETCH OF CORNER

NOT TO SCALE

CERTIFICATION

I, Steven A. Boyer 9750LS,
certify the information shown herein is true and correct.
Steven A. Boyer
Signature Ground Party Chief
I, Roger O. Green,
certify that this Corner Record correctly represents work
performed by me or under my direction in compliance with
the "Corner Recordation Act" (70-22-10769LS M.C.A.)
Roger O. Green
Signature of Surveyor
Date: 06/21/2001 Reg. No. 13789LS
Employer: U. S. Forest Service

Sec. 30



• corner this sheet

Office of Clerk and Recorder, County of Lincoln This "corner

record" was filed for record on Feb 19, 2002

was noted on the cross-index plat and is assigned page No. 10558, in

book No. _____

Coral M. Cummings
County Official

Cross Index No. V-03 T. 30N. R. 33W. P.M., MT

Adopted July 1, 1981, Montana Board of Professional Engineers & Land Surveyors