

# CERTIFIED CORNER RECORDATION

Corner NE 1/16 Cor. S32 T. 30 N., R. 33 W., P.M.M. Lincoln County

## Record :

1893 GLO Township Subdivision by Daniel Mumbrue. No monuments set.

CofS No's. 559 & 577 by M. Lauteren 4232-S. No monuments set.

CofS No's. 891 & 1273 by JH Ninneman 4661-S. No monumens set.

## Found Evidence :

A field search of the area found no set monuments.

## Perpetuation :

The NE 1/16 Corner of Section 32, T. 30 N., R. 33 W. was set from computed position from a partial sectional breakdown done by Davis Surveying on record at the Lincoln County Courthouse, Libby Montana.

At the computed position, set a 5/8 in. diam. alum. rod 30 ins. long, 28 ins. in the ground, with a 3 1/4 inch diam. alum. cap marked as shown below, from which:

A treated power pole 14 ins. diam. bears N 50° E, 94.60 feet dist.

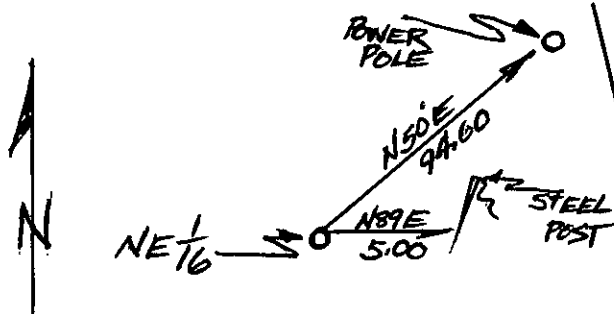
A steel post 6 ft. long, 2 ft. in the ground, with attached Land Survey Monument and Property Line decals bears N 89° E, 5 ft. dist.

Attached Bearing Tree sign to described power pole.

Attached Land Survey Monument sign to an existing fence post west of set monument.



Magnetic Declination: 18° East



Sketch of Corner

## CERTIFICATION

I, John Damon

certify the information shown herein is true and correct

John Damon  
Signature of Ground Party Chief

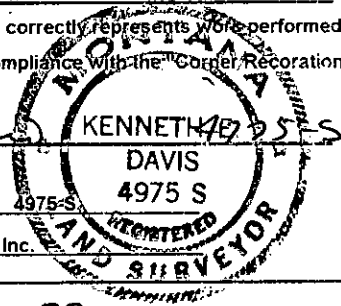
I, Ken E. Davis

certify that this Corner Record correctly represents work performed by me or under my direction in compliance with the "Corner Recordation Act" (70-22-101, et seq., M.C.A.)

Ken E. Davis  
Signature of Surveyor & Seal

Date: \_\_\_\_\_ Reg. No. 4975-S

Employer: Davis Surveying, Inc.

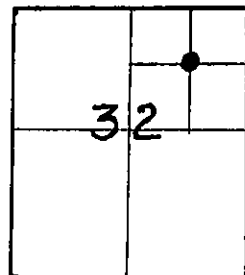


Office of Clerk and Recorder, County of Lincoln

This "corner record" was filed for record on 9-9-98 was noted on the cross-index plat and is assigned page No. 10205 in book No. Coral M. Cummings, PLS

County Official

## Section 32



Cross Index No. NE 1/16 S32 T. 30 N., R. 33 W., PMM

• THIS CORNER