

CERTIFIED CORNER RECORDATION

Corner E 1/16 Cor. S32 T. 30 N., R. 33 W., P.M.M. Lincoln County

Record :

1893 GLO Township Subdivision by Daniel Mumbrue. No monuments set.

CofS No. 796 and certified corner recordation Bk. 1 Page 934 by JH Ninneman 4661-S Ninneman Engineering May 1980. "Set 5/8 in. diam. by 24 in. long with 1 1/4 in. diam. yellow P.V.C. cap stamped JHN 4661-S.

Found Evidence :

During a field search of the area, a 5/8 in. diam. rebar with no cap was found badly bent. No Bearing Trees were found or recovered.

Perpetuation :

The E 1/16 Corner of Section 32, T. 30 N., R. 33 W. was set from computed position from a partial sectional breakdown done by Davis Surveying on record at the Lincoln County Courthouse, Libby Montana. At the computed position, set a 5/8 in. diam. steel rebar 24 ins. long, 20 ins. in the ground, with a 2 1/2 inch diam. alum. cap marked as shown below, from which:

A Western Tamarack 15 1/4 ins. diam. bears N 5° E, 30.90 feet dist., scribed "E 1/16 S29 BT".

A Ponderosa Pine 6 3/4 ins. diam. bears S 4° E, 45.50 feet dist., scribed "E 1/16 S32 BT".

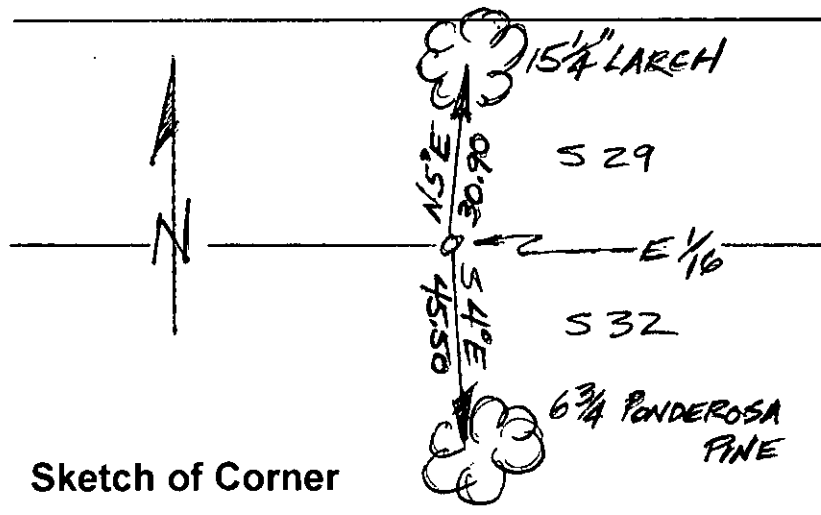
Painted 6 in. wide bands and scribed faces red.

Attached Bearing Tree and Land Survey Monument signs to both trees.

Set a 6 ft. long steel post 2 ft. in the ground with attached Land Survey Monument and Property Line decals East 3 ft. dist. on line from set monument.

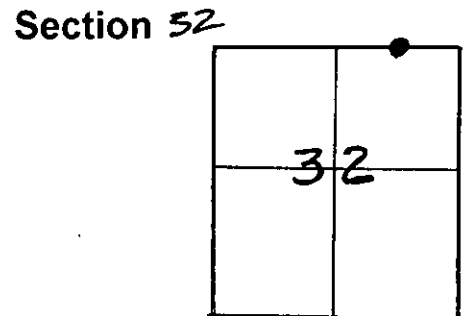


Magnetic Declination: 18° East



**CERTIFICATION**  
 I, John Damon  
 certify the information shown herein is true and correct  
 Signature of Ground Party Chief  
 I, Ken E. Davis  
 certify that this Corner Record correctly represents work performed by me or under my direction in compliance with the "Corner Recordation Act" (70-27-101, et seq., M.C.A.)  
 Signature of Surveyor & Seal  
 Date: \_\_\_\_\_ Reg. No. 4975 S  
 Employer: Davis Surveying, Inc.

Office of Clerk and Recorder, County of Lincoln  
 This "corner record" was filed for record on 9-9-98  
 was noted on the cross-index plat and is assigned page No. 10203  
 in book No. \_\_\_\_\_  
Coral M. Cunningham By PUB  
 County Official



Cross Index No. S29 E 1/16 S32 T. 30 N., R. 33 W., PMM • THIS CORNER