

CERTIFIED CORNER RECORDATION

Corner 1/4 Cor. S 31 T. 30 N., R. 33 W., P.M.M. Lincoln County

Record :

1893 GLO Survey by Daniel Mumbrue.

"Set a post 3 ft. long, 3 ins. square, 24 ins. in the ground, for 1/4 Sec. Cor., marked 1/4 S. on N. face; from which:

A Cedar 10 ins. diam. bears N 53° E 12 lks. distant marked 1/4 BT.

A Cedar 10 ins. diam. bears S 67° E 15 lks. distant marked 1/4 BT."

1979 Certificate of Survey No. 647 by J.W. Ninneman, Ninneman Engineering. No monument for the 1/4 Cor. S31 T30N R33W was set per this survey.

Found Evidence :

No monument or accessories per the 1893 GLO survey were recovered. No monument for C. of S. No. 647 was found during field search done in this area.

Perpetuation :

The S 1/4 of Section 31 was calculated using proportional distances from the found BLM monument marking the S 1/4 of Section 32, T. 30 N., R. 33 W., P.M.M., and the found alum. monument marking the SW Corner of Section 31, T. 30 N., R. 33 W., P.M.M., from which:

Set a 2 1/2 inch diam. alum. pipe, 30 ins. long, 26 ins. in the ground, with a 3 1/4 inch diam. alum. cap marked as shown below, from which:

A Cedar 4 1/2 ins. diam. bears N 14°30' W 34.00 ft. dist. scribed (1/4 S 31 BT).

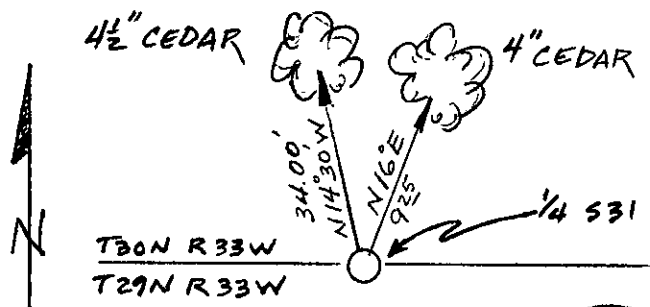
A Cedar 4 ins. diam. bears N 16° E 9.25 ft. dist. scribed (1/4 S 31 BT).

Paint scribed faces red with 6 inch wide red bands around both trees.

Attached Bearing Tree and Land Survey signs to both trees.

Set a steel post with attached Land Survey Monument and Property Line decals North on line 2 ft. dist. from set monument.

Magnetic Declination: 18° East



Sketch of Corner

CERTIFICATION

I, John Damon

certify the information shown herein is true and correct

John Damon

Signature of Ground Party Chief

I, Ken E. Davis

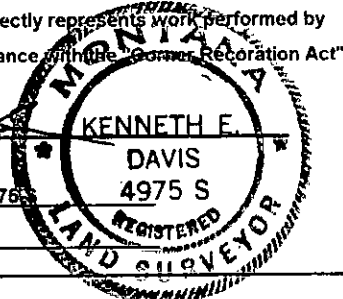
certify that this Corner Record correctly represents work performed by me or under my direction in compliance with the "Corner Recordation Act" (70-22-101, et seq., M.C.A.)

Ken E. Davis

Signature of Surveyor & Seal

Date: 4-6-98 Reg. No. 4975 S

Employer: Davis Surveying, Inc.



Section 31

Office of Clerk and Recorder, County of Lincoln

This "corner record" was filed for record on 4-20-98

was noted on the cross-index plat and is assigned page No. 10111

in book No. Coral M. Cumming

County Official

Cross Index No. 1/4 Cor S31 T. 30 N., R. 33 W., PMM

• THIS CORNER

