

CERTIFIED CORNER RECORDATION

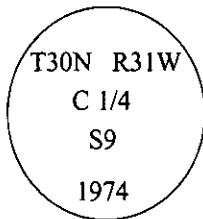
Corner C 1/4 Sec. 9 T. 30N R. 31W P.M., MT Lincoln County

I. 1972 original record by J. W. Ninneman: Refer to Plat No. ?

1974 B.L.M. Dependent Resurvey record by S. B. Hjellum and J. S. Pritchard: The C 1/4 section corner of section 9, established by J. W. Ninneman, No. 534 ES, in 1972, monumented with an iron bar, 5/8 in. diam., firmly set, projecting 2 ins. above ground.

At the corner point:

Set an iron post, 28 ins. long, 2 1/2 ins. diam., 23 ins. in the ground, with a brass cap mkd:



from which a bearing tree marked by Ninneman:

A fir, 13 ins. diam., bears N83 1/2°W, 38 lks. dist., mkd. "C 1/4".

Established 1 new bearing tree:

A larch, 11 ins. diam., bears N20 3/4°E, 31 lks dist., mkd. "C 1/4 S9 BT".

II. Found a B.L.M. brass cap, 2 ins. above ground, firmly set, mkd. as shown above.

from which:

A fir, 17 ins. diam., bears N7°E, 24.9 ft. (38 lks.) dist., with visible scribing. (No record)

A larch, 14 ins. diam., bears N21°E, 20.5 ft. (31 lks.) dist., with healed face.

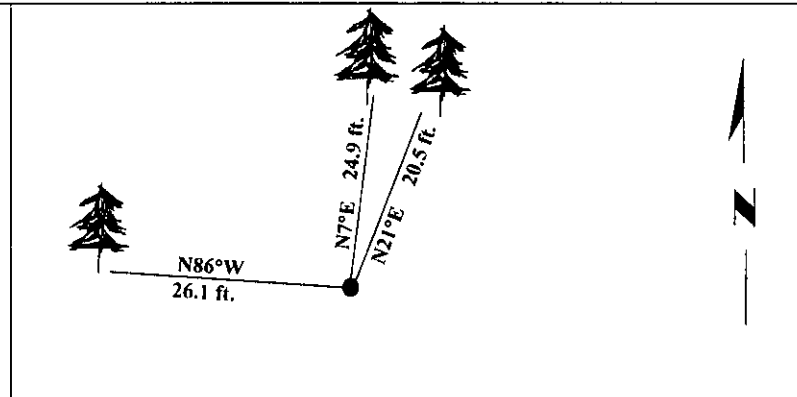
III. Established 1 new bearing tree:

A fir, 8 ins. diam., bears N86°W, 26.1 ft. dist., Mkd. "C 1/4 S9 BT".

Painted bearing trees and attached Land Survey Monument and Bearing Tree signs.

Set a steel guard post North, 3.0 ft. dist., with Land Survey Monument and Property Boundary decals.

Magnetic Declination: 20° East.



SKETCH OF CORNER

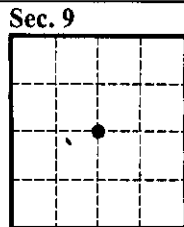
CERTIFICATION	
I. <u>Rex O. Rice</u>	certify the information shown herein is true and correct.
Signature Ground Party Chief	
I. <u>Alvah F. Hughes</u>	
certify that this Corner Record correctly represents work performed by me or under my direction in compliance with the "Corner Recordation Act" (70-22-701, et seq., M.C.A.)	
Signature of Surveyor & Seal	
Date: <u>1/12/96</u>	
Reg. No.: <u>7322LS</u>	
Employer: <u>U.S. FOREST SERVICE</u>	

Office of Clerk and Recorder, County of LINCOLN. This "corner record" was filed for record on JULY 29, 1997 was noted on the cross-index plat and is assigned page No. 9755 in book No. _____

CORAL M. CUMMINGS

County Official

By OLB



• - corner this sheet

Cross Index No. G-11

T. 30N R. 31W P.M., MT