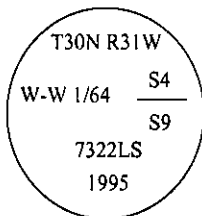


CERTIFIED CORNER RECORDATION

Corner W-W 1/64 Sec. 4 & 9 T. 30N R. 31W P.M., MT Lincoln County

- I. No previous record.
- II. No evidence found.
- III. At the calculated position shown by Certificate of Survey No. 2398 filed at Lincoln County Courthouse, Libby, Montana; set a 3/4 in. diam. by 30 ins. long aluminum rod, 25 ins. in the ground with 3 1/4 in. diam., U.S.D.A., Forest Service aluminum cap, marked as shown:



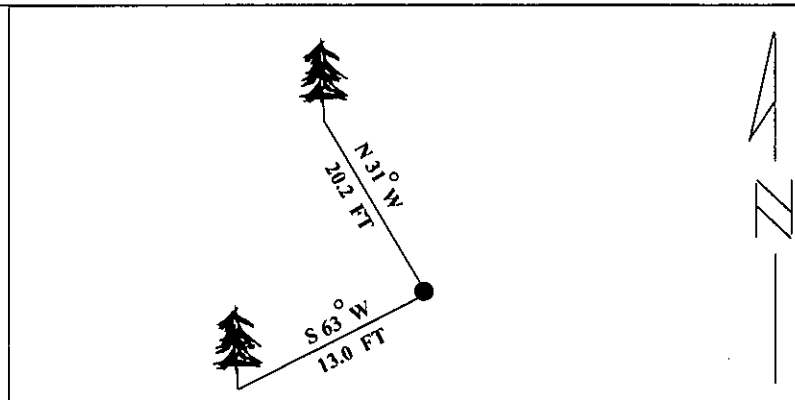
from which

A fir, 14 ins. diam., bears S 80°W, 18.4 ft. dist., mkd. W-W 1/64 S9 BT.
A larch, 10 ins. diam., bears N 34°W, 10.4 ft. dist., mkd. W-W 1/64 S4 BT.

Painted bearing trees and attached Land Survey Monument and Bearing Tree signs.

Set a 6 ft. galvanized steel guard post with Land Survey Marker and Property Boundary decals, South, 3.0 ft.

Magnetic Declination: 20° East.



SKETCH OF CORNER

CERTIFICATION

I, Mark Federman
certify the information shown herein is true and correct.

Signature Ground Party Chief

I, Alvah F. Hughes
certify that this Corner Record correctly represents work performed by me or under my direction in compliance with the "Corner Recordation Act" (70-22-10), et seq., M.C.A.)

Alvah F. Hughes
Signature of Surveyor & Seal

Date: 12/07/95

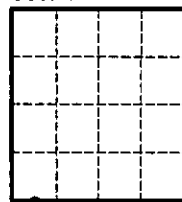
Reg. No.: 7322LS

Employer: U.S. FOREST SERVICE

Office of Clerk and Recorder, County of LINCOLN. This "corner record" was filed for record on JULY 29, 1997 was noted on the cross-index plat and is assigned page No. 9752, in book No. CORAL M. CUMMINGS

County Official B. O. B.

Sec. 4



• - corner this sheet

Cross Index No. E - 9.5 T. 30N R. 31W P.M., MT