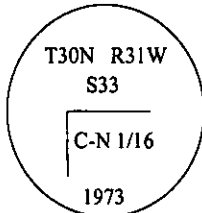


CERTIFIED CORNER RECORDATION

Corner C N 1/16 Sec. 33 T. 30N R. 31W P.M., MT Lincoln County

- I. 1973 B.L.M. subdivision survey by Hjellam and Pritchard: Set an iron post, 28 ins. long, 2 1/2 ins. diam., 22 ins. in the ground, in a collar of stone, with brass cap mkd. as shown.



Established two bearing trees:

- A pine, 6 ins. diam., bears S9°W, 48 lks. dist., mkd. "CN 1/16 S33 BT".  
A pine, 6 ins. diam., bears N86 1/4°W, 127 lks. dist., mkd. "CN 1/16 S33 BT".

- II. Found a 2 1/2 in. diam. iron pipe, 6 ins. above ground, firmly set, with a 3 1/4 in. brass cap mkd. as shown above, from which:

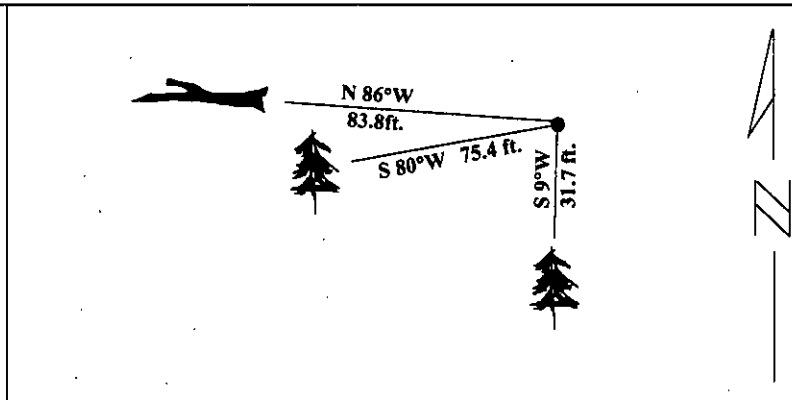
- A pine, 11 ins. diam., bears S9°W, 31.7 ft. (48 lks.) dist., with visible scribing.  
A fallen pine snag, 8 ins. diam., bears N86°W, 83.8 ft. (127 lks.) dist., with visible scribing.

- III. Established one new bearing tree:

- A pine, 7 ins. diam., bears S80°W, 75.4 ft. dist., scribed "X BT".

Painted red bands around the bearing trees and attached Land Survey Monument and Bearing Tree signs.

Magnetic Declination: 20° East



SKETCH OF CORNER

CERTIFICATION

I, Jeffrey Hintz  
certify the information shown herein is true and correct.

Signature Ground Party Chief

I, Alvah F. Hughes  
certify that this Corner Record correctly represents work performed by me or under my direction in compliance with the "Corner Recordation Act" (70-22-101, et seq., M.C.A.)

Signature of Surveyor & Seal

Date: 01/31/96

Reg. No.: 7322LS

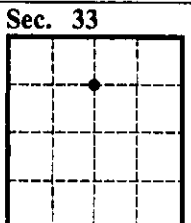
Employer: U.S. FOREST SERVICE

Office of Clerk and Recorder, County of LINCOLN. This "corner record" was filed for record on \_\_\_\_\_ was noted on the cross-index plat and is assigned page No. 9742 in book No. \_\_\_\_\_

CORAL M. CUMMINGS

County Official

By delB



• - corner this sheet