

# CERTIFIED CORNER RECORDATION

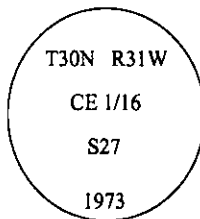
Corner C E 1/16 Sec. 27 T. 30N R. 31W P.M., MT Lincoln County

- I. 1973 B.L.M. subdivision survey by Hjellam and Pritchard: Set an iron post, 28 ins. long, 2 1/2 ins. diam., 24 ins. in the ground, with brass cap.

Established two bearing trees:

A pine, 8 ins. diam., bears S47 1/4°W, 31 lks. dist., mkd. "CE 1/16 S27 BT".  
A pine, 12 ins. diam., bears N52 1/4°W, 60 lks. dist., mkd. "CE 1/16 S27 BT".

- II. Found a 2 1/2 in. diam. iron pipe, 4 ins. above ground, firmly set in a collar of stone, with a 3 1/4 in. brass cap mkd. as shown.



from which:

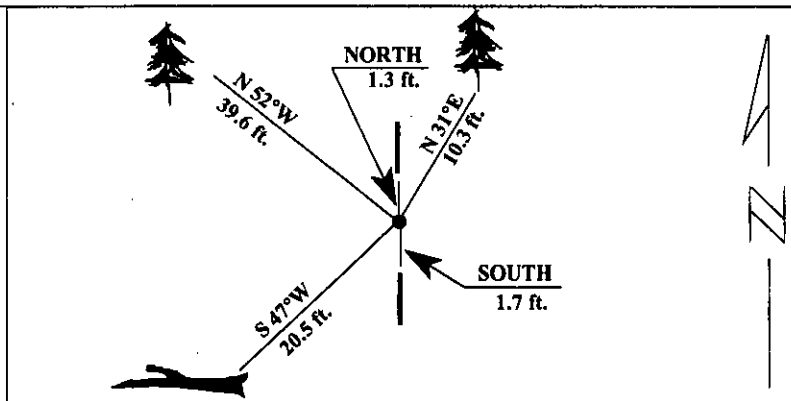
A steel guard post, with PB decal, North, 1.3 ft. distant.  
A steel guard post, with LSM and PB decals, South, 1.7 ft. distant.  
A fallen pine snag, 8 ins. diam., bears S47°W, 20.5 ft. (31 lks.) dist., with visible scribing.  
A pine, 17 ins. diam., bears N52°W, 39.6 ft. (60 lks.) dist., with a healed face.

- III. Established one new bearing tree:

A pine, 20 ins. diam., bears N31°E, 10.3 ft. dist., scribed "C E 1/16 S27 BT".

Painted red bands around the bearing trees and attached Land Survey Monument and Bearing Tree signs.

Magnetic Declination: 20° East



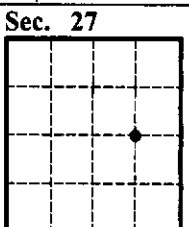
SKETCH OF CORNER

CERTIFICATION	
I, <u>Jeffrey Hintz</u>	certify the information shown herein is true and correct.
Signature Ground Party Chief	
I, <u>Alvah F. Hughes</u>	
certify that this Corner Record correctly represents work performed by me or under my direction in compliance with the "Corner Recordation Act" (70-22-101, et seq., M.C.A.)	
<u>Alvah F. Hughes</u>	
Signature of Surveyor to Seal	
Date: <u>01/31/96</u>	
Reg. No.: <u>7322LS</u>	
Employer: <u>U.S. FOREST SERVICE</u>	

Office of Clerk and Recorder, County of LINCOLN. This "corner record" was filed for record on JULY 29, 1997 was noted on the cross-index plat and is assigned page No. 9741 in book No. CORAL M. CUMMINGS

County Official

By DLB



● - corner this sheet