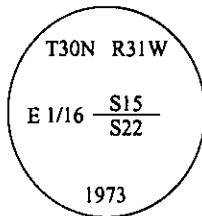


CERTIFIED CORNER RECORDATION

Corner E 1/16 **Sec.** 15 & 22 **T.** 30N **R.** 31W **P.M., MT** **Lincoln** **County**

I. 1974 B.L.M. survey by Hjellam and Pritchard: Set a 2 1/2 in. diam. iron post, marked one bearing tree and used a power pole for bearing object.

1986 Corner Recordation by Harold W. Gruzing #2925-S: Found a 2 1/2 in. diam. iron post, projecting 2 ins. above ground, with brass cap mkd. as shown.



from which:

A power pole, bears S24°E, 22.5 ft. distant. (record)

A pine, 14 ins. diam., bears N20 1/2°W, 18.1 ft. dist., mkd. "T30N R31W E 1/16 S15 BT". (record 18.5 ft.)

Set a steel post with "Land Survey Monument" decal, 1.0 ft. SW of monument.

II. Found a 2 1/2 in. diam. iron pipe, 2 ins. above ground, firmly set, with a 3 1/4 in. brass cap mkd. as shown above, from which:

A power pole, bears S24°E, 22.5 ft. distant. (record)

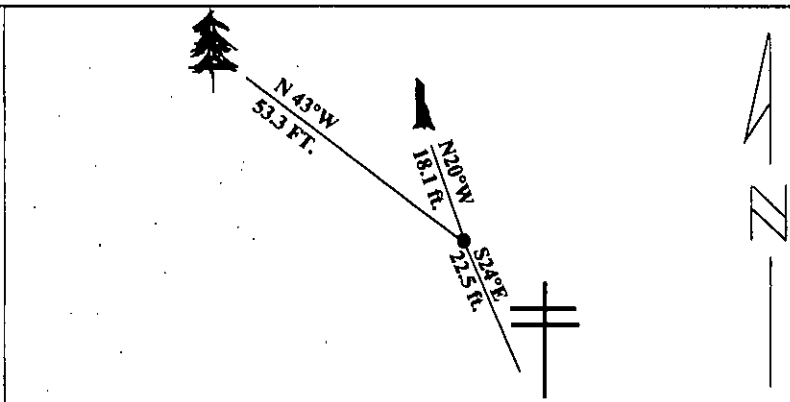
A high pine stump, 13 ins. diam., bears N20°W, 18.1 ft. dist., mkd. "T30N R31W E 1/16 S15 BT". (record 18.5 ft.)

III. Established one new bearing tree:

A fir, 11 ins. diam., bears N43°W, 53.3 ft. dist., scribed "E 1/16 S15 BT".

Painted red bands around the bearing trees and attached Land Survey Monument and Bearing Tree signs.

Magnetic Declination: 20° East

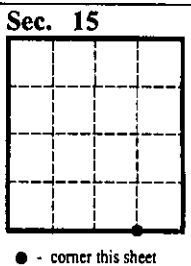


SKETCH OF CORNER

CERTIFICATION
I. <u>Jeffrey Hintz</u> certify the information shown herein is true and correct.
Signature Ground Party Chief
I. <u>Alvah F. Hughes</u> certify that this Corner Record correctly represents work performed by me or under my direction in compliance with the "Corner Recordation Act" (70-22-101, et seq., M.C.A.)
<i>Alvah F. Hughes</i> Signature of Surveyor & Seal
Date: <u>01/30/96</u>
Reg. No.: <u>7322LS</u>
Employer: <u>U.S. FOREST SERVICE</u>

Office of Clerk and Recorder, County of LINCOLN. This "corner record" was filed for record on JULY 29, 1997 was noted on the cross-index plat and is assigned page No. 9740 in book No. _____

CORAL M. CUMMINGS
County Official
By DEB



● - corner this sheet

Cross Index No. **N-16** **T.** 30N **R.** 31W **PMM**