

# CERTIFIED CORNER RECORDATION

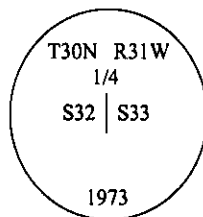
Corner E 1/4 Sec. 32 T. 30N R. 31W P.M., MT Lincoln County

I. 1893 original G.L.O. record by Daniel P. Mumbrue: Set a post 3 ft. long, 3 ins. square, 24 ins. in the ground, for 1/4 sec. cor., marked 1/4 S. on W. face; from which:

A fir, 12 ins. diam., bears N76°E, 49 lks. dist., mkd. "1/4 S BT".  
A fir, 10 ins. diam., bears N67°W, 17 lks. dist., mkd. "1/4 S BT".

1973 B.L.M. dependant resurvey by Hjellam and Pritchard: The 1/4 sec. cor. of secs. 32 and 33, monumented with the remains of the top of the decayed orig. wooden post, 11 ins. long, 3 ins. square, no marks visible, loosely set in a small collar of stone.

Set an iron post, 28 ins. long, 2 1/2 ins. diam., 23 ins. in the ground, in a collar of stone, with brass cap mkd. as shown. Deposit remains of wooden post alongside iron post.



Established two new bearing trees:

A pine, 7 ins. diam., bears S86 1/2°E, 55 lks. dist., mkd. "T30N R31W 1/4 S33 BT".  
A pine, 7 ins. diam., bears N21 1/2°W, 36 lks. dist., mkd. "T30N R31W 1/4 S32 BT".

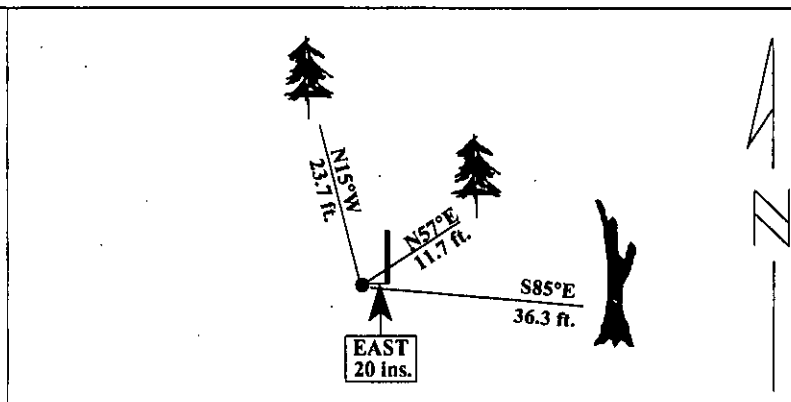
II. Found a 3 1/4 in. brass cap, flush with the ground, firmly set in a collar of stone, mkd. as shown above, from which:

A pine snag, 8 ins. diam., bears S85°E, 36.3 ft. (55 lks.) dist., with visible scribing.  
A pine, 8 ins. diam., bears N15°W, 23.7 ft. (36 lks.) dist., with visible scribing. (Rec: N 21 1/2°W)  
A carsonite guard post bears East, 1.6 ft. distant.

III. Established one new bearing tree:  
A cedar, 7 ins. diam., bears N57°E, 11.7 ft. dist., scribed "T30N R31W 1/4 S33 BT".

Painted red bands around the bearing trees and attached Land Survey Monument and Bearing Tree signs.

Magnetic Declination: 20° East



SKETCH OF CORNER

CERTIFICATION	
I. <u>Jeffrey Hintz</u> certify the information shown herein is true and correct.	
Signature Ground Party Chief	
I. <u>Alvah F. Hughes</u> certify that this Corner Record correctly represents work performed by me or under my direction in compliance with the "Corner Recordation Act", (70-22,101, et seq., M.C.A.)	
Signature of Surveyor or Spal <u>Alvah F. Hughes</u>	
Date:	<u>01/31/96</u>
Reg. No.:	<u>7322LS</u>
Employer: <u>U.S. FOREST SERVICE</u>	

Office of Clerk and Recorder, County of LINCOLN. This "corner record" was filed for record on JULY 29, 1997, was noted on the cross-index plat and is assigned page No. 9738 in book No. CORAL M. CUMMINGS

County Official By PEB

