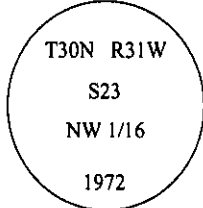


CERTIFIED CORNER RECORDATION

Corner NW 1/16 Sec. 23 T. 30N R. 31W P.M., MT Lincoln County

- I. 1972 B.L.M. survey by Hjellam and Pritchard: Set a 2 1/2 in. diam. iron post, marked two bearing trees.
- 1986 Corner Recordation by Harold W. Gruzing #2925-S: Found a 2 1/2 in. diam. iron post, projecting 4 ins. above ground, with brass cap mkd. as shown.

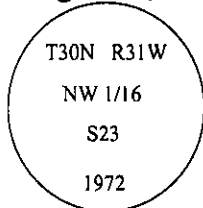


from which:

- A pine, 9 ins. diam., bears S54°W, 3.5 ft. dist., mkd. "X BT". (record 3.3 ft.)
- A pine, 7 ins. diam., bears N29°W, 25.0 ft. dist., mkd. "NW 1/16 S23 BT". (record)

Set a steel post with "Land Survey Monument" decal, 1 ft. SW. of monument.

- II. Found a 2 1/2 in. diam. iron pipe, 3 ins. above ground, firmly set, with a 3 1/4 in. brass cap mkd. as shown.



from which: (both bearing trees were set in 1986)

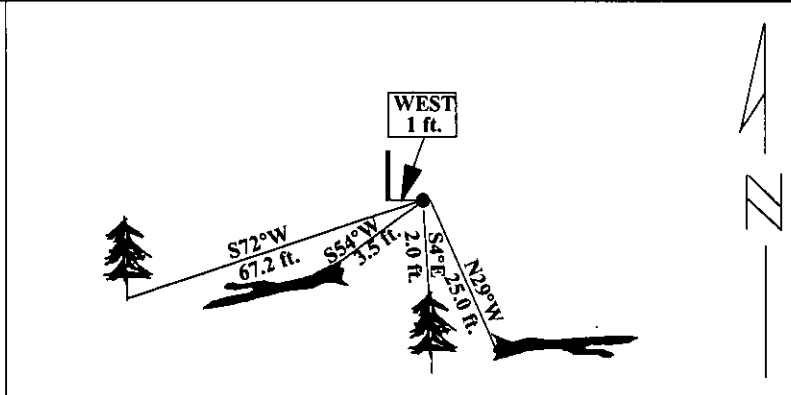
- A dead down pine, 8 ins. diam., bears N33°W, 26.4 ft. dist., mkd. "NW 1/16 S23 BT". (N29°W)
- A dead down pine, 8 ins. diam., bears S52°W, 3.0 ft. dist., mkd. "X" "BT". (S54°W)
- A steel guard post with LSM and PB decals, bears West, 1 foot.

The dead down trees were measured from root crowns.

- III. Established two new bearing trees:
- A larch, 10 ins. diam., bears S4°E, 2.0 ft. dist., scribed "X" "BT".
 - A larch, 15 ins. diam., bears S72°W, 67.2 ft. dist., scribed "NW 1/16 S23 BT".

Painted red bands around the bearing trees and attached Land Survey Monument and Bearing Tree signs.

Magnetic Declination: 20° East



SKETCH OF CORNER

CERTIFICATION

I, Jeffrey Hintz
certify the information shown herein is true and correct.

Signature Ground Party Chief

I, Alvah F. Hughes
certify that this Corner Record correctly represents work performed by me or under my direction in compliance with the "Corner Recordation Act" (70-22-101, et seq., M.C.A.)

Alvah F. Hughes
Signature of Surveyor & Seal

Date: 01/30/96

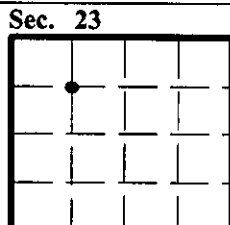
Reg. No.: 7322LS

Employer: U.S. FOREST SERVICE

ALVAH F. HUGHES
7322 LS
REGISTERED

Office of Clerk and Recorder, County of LINCOLN. This "corner record" was filed for record on JULY 29, 1997 was noted on the cross-index plat and is assigned page No. 9703 in book No. CORAL M.C. IMMINGS By PLB

County Official



• - corner this sheet