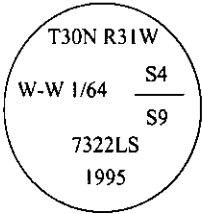


CERTIFIED CORNER RECORDATION

Corner W-W 1/64 Sec. 4 & 9 T. 30N R. 31W P.M., MT Lincoln County

- I. No previous record.
- II. No evidence found.
- III. At the calculated position shown by Certificate of Survey No. 2398 filed at Lincoln County Courthouse, Libby, Montana; set a 3/4 in. diam. by 30 ins. long aluminum rod, 25 ins. in the ground with 3 1/4 in. diam., U.S.D.A., Forest Service aluminum cap, marked as shown:



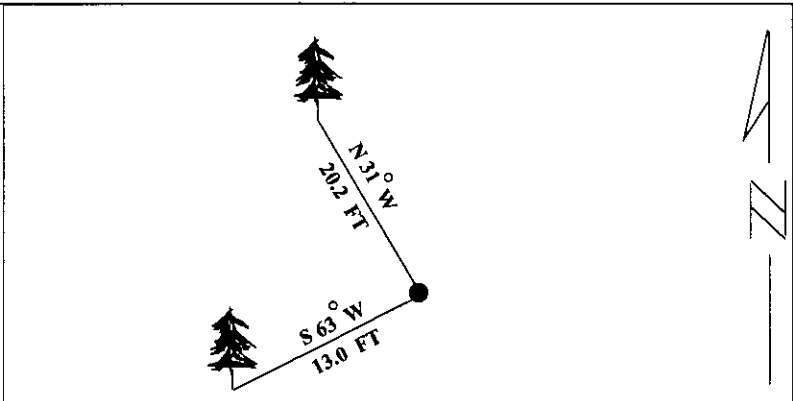
from which

- A fir, 14 ins. diam., bears S80°W, 18.4 ft. dist., mkd. W-W 1/64 S9 BT.
- A larch, 10 ins. diam., bears N34°W, 10.4 ft. dist., mkd. W-W 1/64 S4 BT.

Painted bearing trees and attached Land Survey Monument and Bearing Tree signs.

Set a 6 ft. galvanized steel guard post with Land Survey Marker and Property Boundary decals, South, 3.0 ft.

Magnetic Declination: 20° East.



SKETCH OF CORNER

CERTIFICATION

I, **Mark Federman**
certify the information shown herein is true and correct.

Signature Ground Party Chief

I, **Alvah F. Hughes**
certify that this Corner Record correctly represents work performed by me or under my direction in compliance with the "Corner Recordation Act" (70-22-101, et seq., M.C.A.).

Signature of Surveyor & Seal

Date: **12/07/95**

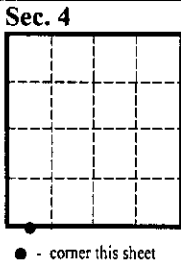
Reg. No.: **7322LS**

Employer: **U.S. FOREST SERVICE**

Seal: MONTANA REGISTERED LAND SURVEYOR 7322-LS-95

Office of Clerk and Recorder, County of **LINCOLN**. This "corner record" was filed for record on **FEB 20, 1997** was noted on the cross-index plat and is assigned page No. **9228** in book No. **CORAL M. CUMMINGS** By **DLB**

County Official



• - corner this sheet