

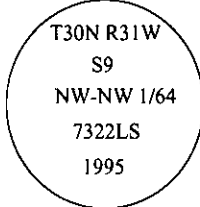
# CERTIFIED CORNER RECORDATION

Corner NW-NW 1/64 Sec. 9 T. 30N R. 31W P.M., MT Lincoln County

I. No previous record.

II. No evidence found.

III. At the calculated position shown by Certificate of Survey No. 2398 filed at Lincoln County Courthouse, Libby, Montana; set a 3/4 in. diam. by 30 ins. long aluminum rod, 29 ins. in the ground with 3 1/4 in. diam., U.S.D.A., Forest Service aluminum cap, marked as shown:



from which

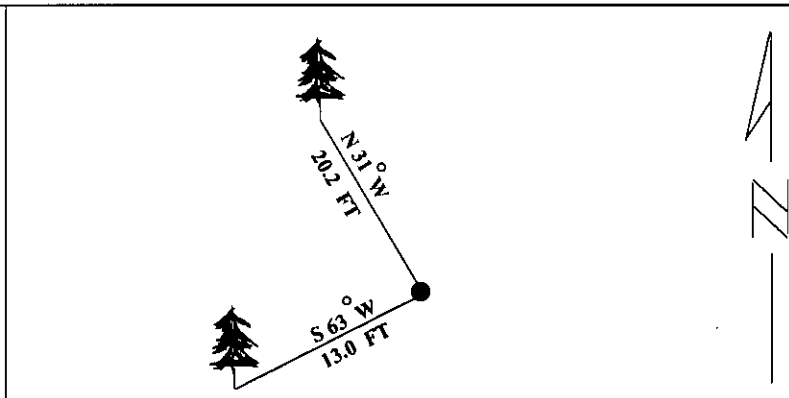
A larch, 17 ins. diam., bears S63°W, 13.0 ft. dist., mkd. NW-NW 1/64 S9 BT.

A larch, 10 ins. diam., bears N31°W, 20.2 ft. dist., mkd. NW-NW 1/64 S9 BT.

Painted bearing trees and attached Land Survey Monument and Bearing Tree signs.

Set a 6 ft. galvanized steel guard post with Land Survey Marker and Property Boundary decals, East, 3.0 ft.

Magnetic Declination: 20° East.

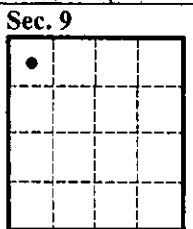


SKETCH OF CORNER

CERTIFICATION	
I. <u>Mark Federman</u>	certify the information shown herein is true and correct.
	Signature Ground Party Chief
I. <u>Alvah F. Hughes</u>	
certify that this Corner Record correctly represents work performed by me or under my direction in compliance with the "Corner Recordation Act" (70-22-101, et seq., M.C.A.)	
	Signature of Surveyor & Seal
Date: <u>12/07/95</u>	
Reg. No.: <u>7322LS</u>	
Employer: <u>U.S. FOREST SERVICE</u>	

Office of Clerk and Recorder, County of LINCOLN. This "corner record" was filed for record on FEB 20, 1997 was noted on the cross-index plat and is assigned page No. 9227 in book No. CORAL M. CUMMINGS By DLB

County Official



● - corner this sheet

Cross Index No. E.5 - 9.5 T. 30N R. 31W P.M., MT