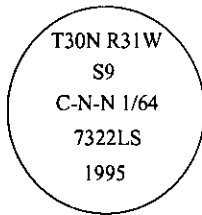


CERTIFIED CORNER RECORDATION

Corner C-N-N 1/64 **Sec.** 9 **T.** 30N **R.** 31W **P.M., MT** **Lincoln** **County**

- I. No previous record.
- II. No evidence found.
- III. At the calculated position shown by Certificate of Survey No. 2398 filed at Lincoln County Courthouse, Libby, Montana; set a 3/4 in. diam. by 30 ins. long aluminum rod, 29 ins. in the ground with 3 1/4 in. diam., U.S.D.A., Forest Service aluminum cap, marked as shown:

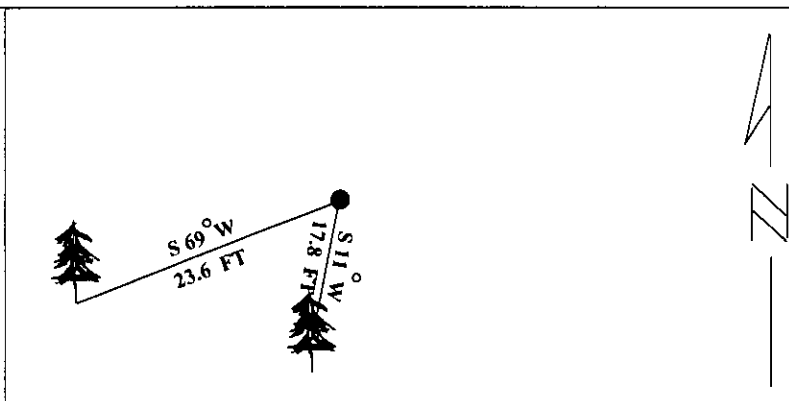


from which

- A fir, 6 ins. diam., bears S11°W, 17.8 ft. dist., mkd. C-N-N 1/64 S9 BT.
- A spruce, 6 ins. diam., bears S69°W, 23.6 ft. dist., mkd. "X" BT.

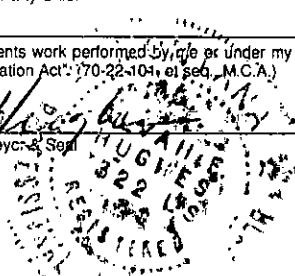
Painted bearing trees and attached Land Survey Monument and Bearing Tree signs.

Magnetic Declination: 20° East.



SKETCH OF CORNER

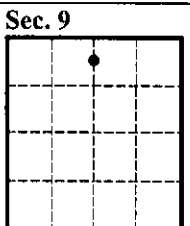
CERTIFICATION	
I, Mark Federman	
<small>certify the information shown herein is true and correct.</small>	
<small>Signature Ground Party Chief</small>	
I, Alvah F. Hughes	
<small>certify that this Corner Record correctly represents work performed by, or under my direction in compliance with the "Corner Recordation Act", (70-22-104, et seq., M.C.A.)</small>	
<small>Signature of Surveyor & Seal</small>	
Date:	<u>12/07/95</u>
Reg. No.:	<u>7322LS</u>
Employer:	<u>U.S. FOREST SERVICE</u>



Office of Clerk and Recorder, County of LINCOLN. This "corner record" was filed for record on FEB 20, 1997 was noted on the cross-index plat and is assigned page No. 9226, in book No. _____

CORAL M. CUMMINGS

County Official *By ALB*



● - corner this sheet