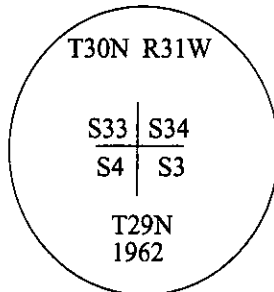


CERTIFIED CORNER RECORDATION

Corner	Sec. Cor.	Sec.	3,4,33 &34	T.	30N	R.	31W	P.M., MT	Lincoln	County
--------	-----------	------	---------------	----	-----	----	-----	----------	---------	--------

- I. 1893 G.L.O. Original Record by Daniel P. Mumbrue: Set a wooden post, 4 ft. long, 4 ins. square, 24 ins. the ground, for cor. to secs. 3,4,33&34,, mkd. "T30N S34" on the N.E., "R31W S3" on the S.E., "T29N S4" on the S.W. and "S33" on the N.W. faces, with 3 notches on the E. and W. edges. Set four bearing trees.
- 1962 B.L.M. Remonumentation Record by Gerald F. Pittman: The cor. of secs. 3,4,33&34, on the S. Boundary of the Tp., monumented with the remains of a wooden post, 4 ins. square, 18 ins. long, firmly set and witnessed by the remains of one of the original bearing trees.
- A larch stump, 14 ins. diam., bears S51 1/2°E, 11 lks. dist., mkd. "T29N R31W S3 BT". (record)
- At the corner point, set an iron pipe, 30 ins. long, 2 1/2 ins. diam., 26 ins. in the ground, in concrete, with brass cap mkd. as shown:



Established one new bearing tree:

A powerpole of power line, extending N.W., N.E. and S., bears S10°W, 9 lks. dist., mkd. with an "X" at the base. Bury the remains of the original wooden post alongside, and raise a flat mound of stone, 3 ft. diam., around the iron post.

1973 B.L.M. Dependent Resurvey by Shirley B. Hjellum et.al.: The cor. of secs. 3,4,33&34, monumented with an iron post, 2 1/2 ins. diam., firmly set, in a concrete base, protruding 6 ins. above the ground, in a collar of stone and witnessed by the remains of the S.E. GLO and the powerpole set in 1962, both mkd. as described in the GLO and 1962 BLM records, with brass cap mkd. as shown above.

1986 Certified Corner Recordation by Harold W. Grusing No. 2925 S: Found a 2 1/2 in diam. iron post, protruding 2 ins. above ground, in a collar of stone and witnessed by the powerpole at record bearing and dist., with brass cap mkd. as shown above. Established three new bearing trees:

- A pine, 12 ins. diam., bears N09°E, 92.0 ft. dist., mkd. "T30N R31W S34 BT".
- A pine, 9 ins. diam., bears S68°E, 63.5 ft. dist., mkd. "T29N R31W S3 BT".
- A pine, 14 ins. diam., bears N76°W, 42.5 ft. dist., mkd. "T30N R31W S33 BT".

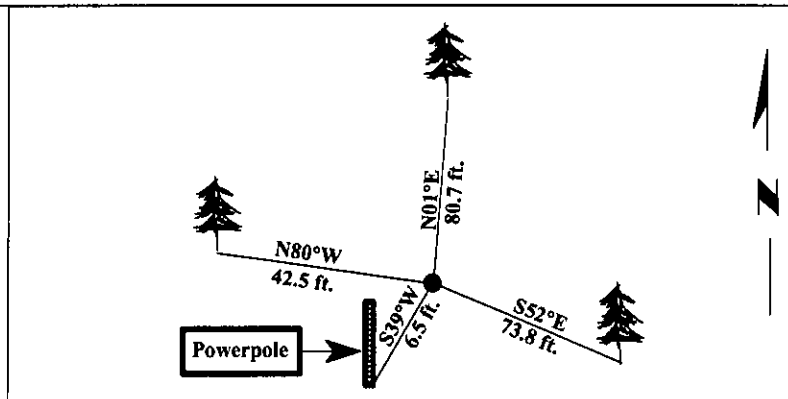
- II. Found a 3 in. diam. aluminum pipe, protruding 4 ins. above the ground, firmly set, with a 3 1/4 in. diam. brass cap mkd. as shown above.
- from which:

- A pine, 17 ins. diam., bears N80°W, 42.5 ft. dist. (1986-record N76°W)
- No evidence of the original Powerpole found.

- III. Established three new bearing trees:

- A fir, 18 ins. diam., bears S52°E, 73.8 ft. dist., mkd "T28N R31W S3 BT".
- A Powerpole, bears S39°W, 6.5 ft. dist., with a bearing tree sign attached.
- A pine, 12 ins. diam., bears N01°W, 80.7 ft. dist., mkd. "T30N R31W S34 BT".

Painted bearing trees and attached Land Survey Monument and Bearing Tree signs.
Magnetic Declination: 20° East.

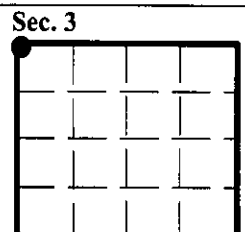


SKETCH OF CORNER

CERTIFICATION	
I. <u>Rex O. Rice</u>	certify the information shown herein is true and correct.
I. <u>Ronald A. Pearson</u>	certify that this Corner Record correctly represents work performed by me or under my direction in compliance with the "Corner Recordation Act" (70-22-101, et seq., M.C.A.)
Date: <u>12/30/96</u>	Signature of Surveyor & Seal
Reg. No.: <u>9008LS</u>	
Employer: <u>U.S. FOREST SERVICE</u>	

Office of Clerk and Recorder, County of LINCOLN. This "corner record" was filed for record on FEB 3, 1997 was noted on the cross-index plat and is assigned page No. 9032 A in book No.

County Official



● - corner this sheet

Cross Index No. Z-13 T. 30N R. 31W P.M., MT