

CERTIFIED CORNER RECORDATION

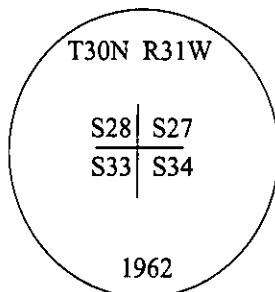
Corner Sec. Cor. Sec. 27,28,33 & 34 T. 30N R. 31W P.M., MT Lincoln County

I. 1893 G.L.O. Original Record by Daniel P. Mumbrue: Set a wooden post, 4 ft. long, 4 ins. square, 24 ins. the ground, for cor. to secs. 27,28,33&34,, mkd. "T30N S27" on the N.E., "R31W S34" on the S.E., "S33" on the S.W. and "S28" on the N.W. faces, with 1 notch on the S. and 3 notches on the E. edges. Set four bearing trees.

1962 B.L.M. Remonumentation Record by Gerald F. Pittman: The cor. of secs. 27,28,33&34, monumentd by the remains of a wooden post, 4 ins. square, 18 ins. long, firmly set and witnessed by the remains of one of the original bearing trees.

A decayed stump, bears N26 1/4°W, 32 lks. dist., mkd. "T30N R31W S28 BT". (record)

At the corner point, set an iron pipe, 30 ins. long, 2 1/2 ins. diam., 26 ins. in the ground, in concrete, with brass cap mkd. as shown:



Established four new bearing trees:

A pine, 7 ins. diam., bears N16°E, 34 lks. dist., mkd. "T30N R31W S27 BT".

A pine, 8 ins. diam., bears S33°E, 24 lks. dist., mkd. "T30N R31W S34 BT".

A pine, 7 ins. diam., bears S52°W, 12 lks. dist., mkd. "T30N R31W S33 BT".

A pine, 6 ins. diam., bears N10°W, 26 lks. dist., mkd. "T30N R31W S28 BT".

Bury the remains of the original wooden post alongside, and raise a flat mound of stone, 3 ft. diam., around the iron post.

1973 B.L.M. Dependent Resurvey by Shirley B. Hjellum et al.: The cor. of secs. 27,28,33&34, monumented with an iron post, 2 1/2 ins. in diam., firmly set, protruding 7 ins. above the ground, in a collar of stone and witnessed by the remains of the N.W. GLO and the N.E., S.W. and the N.W. bearing trees set in 1962, all mkd. as described in the GLO and 1962 BLM records, with the brass cap mkd. as shown above.

1986 Certified Corner Recordation by Harold W. Grusing No. 2925 S: Found a 2 1/2 in. diam. iron post, protruding 6 ins. above ground and witnessed by the N.E., S.W. and the N.W. bearing trees set in 1962, all mkd. as described in the 1962 records, with brass cap mkd. as shown above. Established four new bearing trees.

II. Found a 3 in. diam. aluminum pipe, protruding 10 ins. above the ground, firmly set, with a 3 1/4 in. diam. brass cap mkd. as shown above.

from which:

A pine 4 ins. diam., bears N07°E, 43.2 ft. dist., with visible scribe. (1986-record N37°W, 42.5 ft.)

A pine, 16 ins. diam., bears N29°E, 16.0 ft. dist., mkd. with a healed face. (1986-record N20°E, 15.8 ft.)

A pine, 5 ins. diam., bears S09°E, 46.0 ft. dist., with visible scribe. (1986-record S25°E, 46.2 ft.)

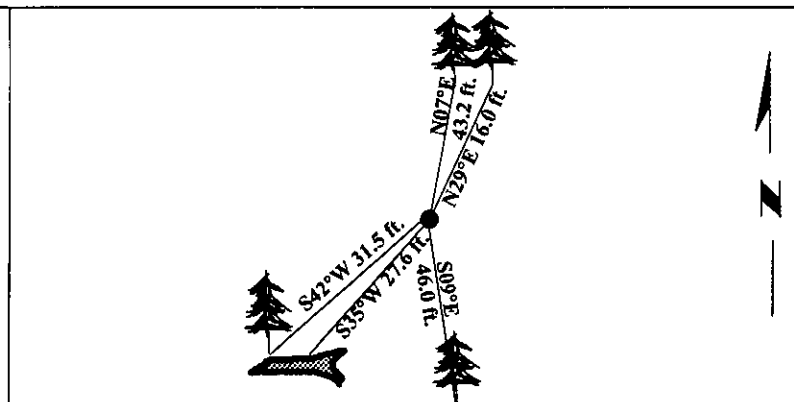
A downed pine, 17 ins. diam., bears S35°W, 27.6 ft. dist., with a pitched face. (1986-record S18 1/2°W, 27.3 ft.)

III. Established one new bearing tree:

A fir, 6 ins. diam., bears S42°W, 31.5 ft. dist., mkd. "T30N R31W S33 BT".

Painted bearing trees and attached Land Survey Monument and Bearing Tree signs.

Magnetic Declination: 20° East.



SKETCH OF CORNER

CERTIFICATION

I, Rex O. Rice certify the information shown herein is true and correct.

I, Ronald A. Pearson certify that this Corner Record correctly represents work performed by me or under my direction in compliance with the "Corner Recordation Act" (70-22-101, et seq., M.C.A.)

Signature of Surveyor & Seal

Date: 12/30/96

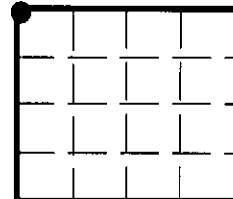
Reg. No.: 9008LS

Employer: U.S. FOREST SERVICE

Office of Clerk and Recorder, County of LINCOLN. This "corner record" was filed for record on FEB 3, 1997 was noted on the cross index plat and is assigned page No. 9032, in book No. CORAL M. C. JENNINGS By JB

County Official

Sec. 34



● - corner this sheet