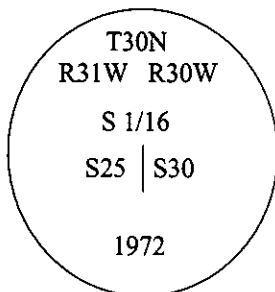


CERTIFIED CORNER RECORDATION

Corner S 1/16 Sec. 25 & 30 T. 30N R. 31W P.M., MT Lincoln County

- I. 1972 B.L.M. Original Record by Shirley B. Hjellum et.al.: At the corner point, set an iron post, 30 ins. long, 2 1/2 in. diam., 26 ins. in the ground, with the brass cap mkd. as shown below: Set two bearing trees.



1986 Certified Corner Recordation by Harold W. Grusing No. 2925 S: Found a 2 1/2 in. diam. iron post, protruding 4 ins. above the ground, with brass cap mkd. as shown above.

from which:

- A pine, 15 ins. diam., bears S79 1/2°E, 35.1 ft. dist., with a pitched face. (BLM-record 54 lks. "35.6 ft.")
- A fir, 13 ins. diam., bears N63 1/2°W, 20.4 ft. dist., mkd. with a healed face. (BLM-record A spruce)

- II. Found a 3 in. diam. aluminum pipe, protruding 4 ins. above the ground, with a 3 1/4 in. diam. brass cap mkd. as shown above.

from which:

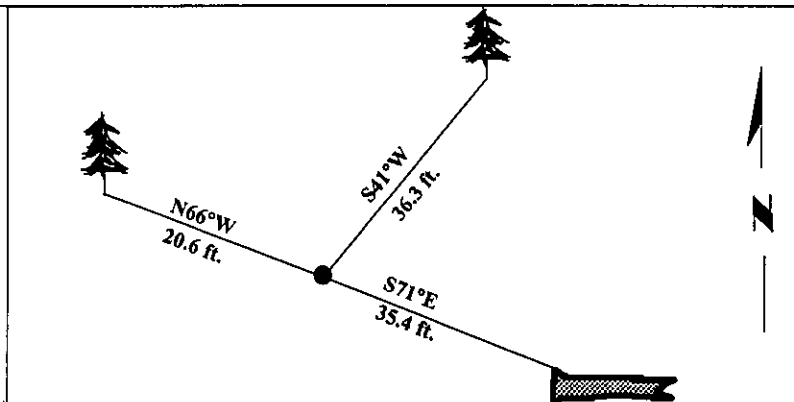
- A fallen pine, 14 ins. diam., bears S71°E, 35.4 ft. dist., with visible scribe. (BLM-record S79 1/2°E, 35.6 ft.)
- A fir, 12 ins. diam., bears N66°W, 20.6 ft. dist., mkd. with a healed face. (BLM-record A spruce, N63 1/2°W, 20.4 ft.)

- III. Established one new bearing tree:

A fir, 9 ins. diam., bears S41°W, 36.3 ft., dist., mkd. "S1/16 S30 BT".

Painted bearing trees and attached Land Survey Monument and Bearing Tree signs.

Magnetic Declination: 20° East.



SKETCH OF CORNER

CERTIFICATION

I, Rex O. Rice
certify the information shown herein is true and correct.

I, Ronald A. Pearson
certify that this Corner Record correctly represents work performed by me or under my direction in compliance with the "Corner Recordation Act" (70-22-101, et seq., M.C.A.)

[Signature]
Signature of Surveyor & Seal

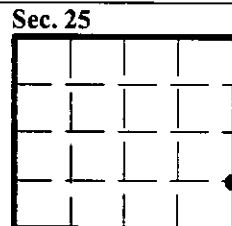
Date: 12/30/96

Reg. No.: 9008LS

Employer: U.S. FOREST SERVICE

Office of Clerk and Recorder, County of LINCOLN. This "corner record" was filed for record on FEB 3, 1997 was noted on the cross-index plat and is assigned page No. 9031 in book No. _____

County Official



● - corner this sheet