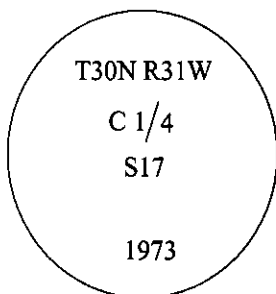


CERTIFIED CORNER RECORDATION

Corner C 1/4 Sec. 17 T. 30N R. 31W P.M., MT Lincoln County

I. 1973 B.L.M. Original Record by Shirley B. Hjellum et al.: The 1/4 sec. cor. of sec. 17, at the intersection with the E. and W. center line. At the corner point, set an iron post, 28 ins. long, 2 1/2 ins. in diam., 2 ins. above the ground, with brass cap mkd. as shown:



Established two bearing trees:

A fir, 6 ins. diam., bears N16 1/4°E, 14 lks. dist., mkd. "C1/4 S17 BT".

A fir, 9 ins. diam., bears N87 1/2°W, 21 lks. dist., mkd. "C1/4 S17 BT".

1986 Certified Corner Recordation by Harold W. Grusing No. 2925 S. Found a 2 1/2 in. diam. iron post, protruding 4 ins. above the ground, with brass cap mkd. as shown above. Found both BLM bearing trees in good condition.

II. Found a 3 in. diam. aluminum pipe, protruding 3 ins. above the ground, firmly set, with a 3 1/4 in. diam. brass cap, mkd. as shown above.

from which:

A downed fir, 6 ins. diam., bears N08°E, 9.4 ft. dist., mkd. with a healed face. (BLM-record N16 1/4°E)

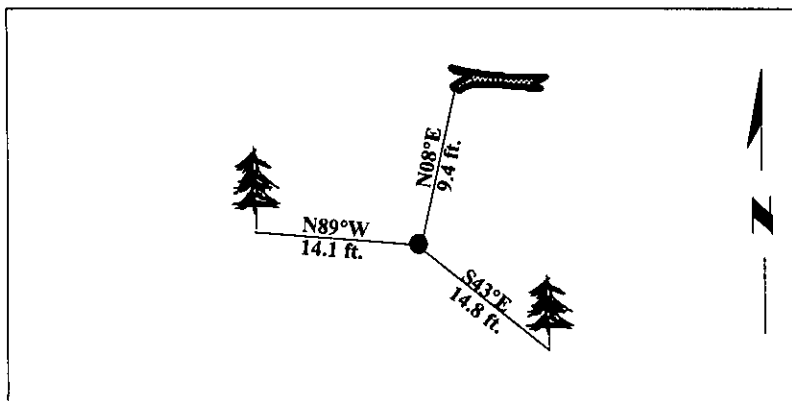
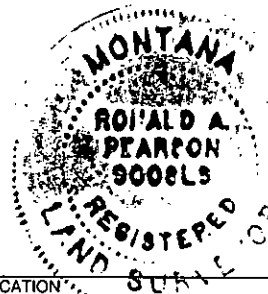
A fir, 10 ins. diam., bears N89°W, 14.1 ft. dist., mkd. with a healed face. (BLM-record N87 1/2°W)

III. Established one new bearing tree:

A fir, 8 ins. diam., bears S43°E, 14.8 ft. dist., mkd. "C1/4 S17 BT".

Painted bearing trees and attached Land Survey Monument and Bearing Tree signs.

Magnetic Declination: 20° East.



SKETCH OF CORNER

CERTIFICATION

I, Rex O. Rice
certify the information shown herein is true and correct.

I, Ronald A. Pearson
certify that this Corner Record correctly represents work performed by me or under my direction in compliance with the "Corner Recordation Act" (70-22-101, et seq., M.C.A.)

Ronald A. Pearson
Signature of Surveyor & Seal

Date: 12/30/96

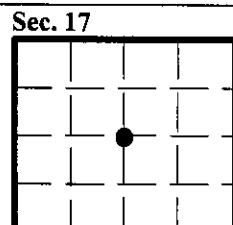
Reg. No.: 9008LS

Employer: U.S. FOREST SERVICE

Office of Clerk and Recorder, County of LINCOLN. This "corner record" was filed for record on FEB 3, 1997 was noted on the cross-index plat and is assigned page No. 9027 in book No. _____

CORNER RECORDATIONS

County Official *By [Signature]*



● - corner this sheet