

CERTIFIED LAND CORNER RECORDATION

SECTION 9 TWP. 30 N., R. 31 W., P.M.M.

DESCRIPTION OF CORNER EVIDENCE FOUND, AND ORIGINAL RECORD (IF KNOWN)

Corners pertinent to this survey set by BLM, as reported on DIAGRAM ON REVERSE SIDE - EXCEPT 1/16 E on South Line set by JTS, License 2343 S

DESCRIPTION OF MONUMENT AND ACCESSORIES ESTABLISHED TO PERPETUATE THE ORIGINAL LOCATION OF THIS CORNER:

Office

Date of work: May, 1980

1/16 SE set as reported on DIAGRAM ON REVERSE SIDE

SKETCH, WITH COURSE AND DISTANCE TO ADJACENT CORNERS IF DETERMINED IN THIS SURVEY. (MAY SKETCH OR PASTE REPRODUCTION ON REVERSE SIDE.)

SEE DIAGRAM ON REVERSE SIDE

Surveyor's Seal

Jeff Paullin

I, certify that the information shown herein is true and correct.

Jeff Paullin

Signature of Ground Party Chief

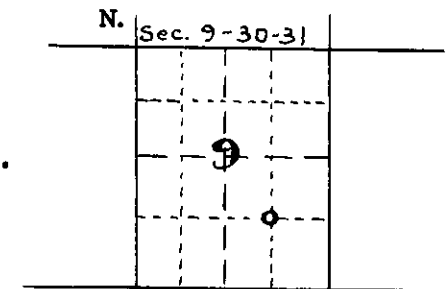
J.H. Ninneman

I, certify that I have carefully performed or reviewed the work done on the diagrammed corner as reported on this recordation form and approve the same.

Jack H. Ninneman

Signature of Surveyor

DIAGRAM OF CORNER:



○ = Corner recorded on the sheet

4661 S

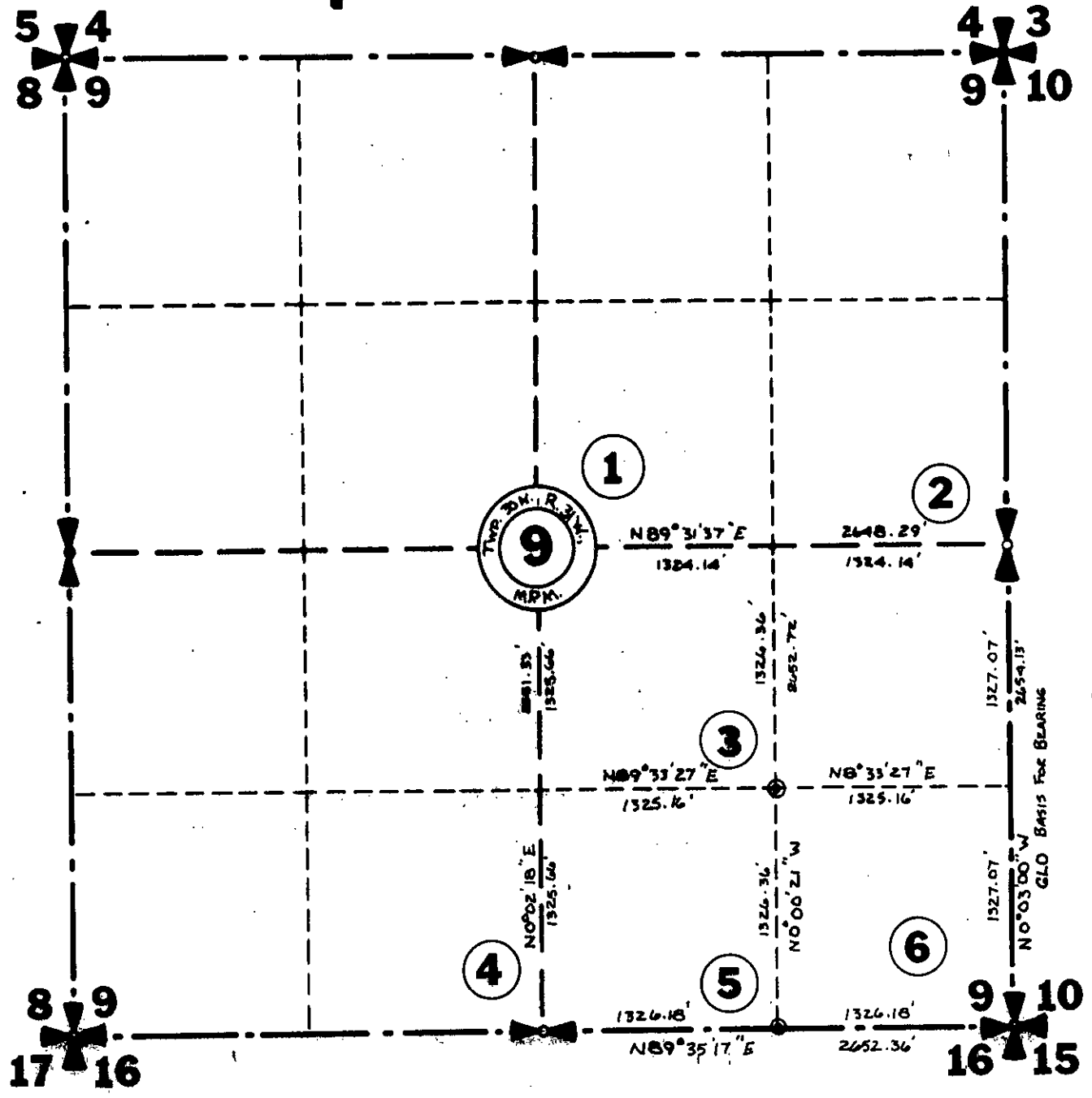
Registration Number

Office of Clerk and Recorder, County of Lincoln

This "corner record" was filed for record on the 31st day of July, 1980, was noted on the cross-index plat and is assigned page No. 887, in book No. ...

Eleanor L. Vaughn by Sherry L. Hawks, Deputy County Official

# Sec. 9 Twp. 30 N., R. 31 W., M.P.M. (92)



- (1) Found B.L.M. B.C., 2 B.T.s
- (2) Found B.L.M. B.C., 2 B.T.s
- (3) Set 5/8"x 24" Steel Rod with Yellow Cap stamped: J.H.N. 4661S. from which found 1/2"x 24" Steel Rod with Orange Cap stamped: J.N. 534.E.S. bears S76°55'38"W 10.20 Ft.
- (4) Found B.L.M. B.C.
- (5) Found 1/16 Cor. By J.T.S. 2343S. bears S3°53'16"W 7.31 Ft. from true 1/16 location.
- (6) Found B.L.M. B.C., 2 B.T.s.

