

CERTIFIED LAND CORNER RECORDATION

DESCRIPTION OF CORNER EVIDENCE FOUND, AND ORIGINAL RECORD (IF KNOWN)

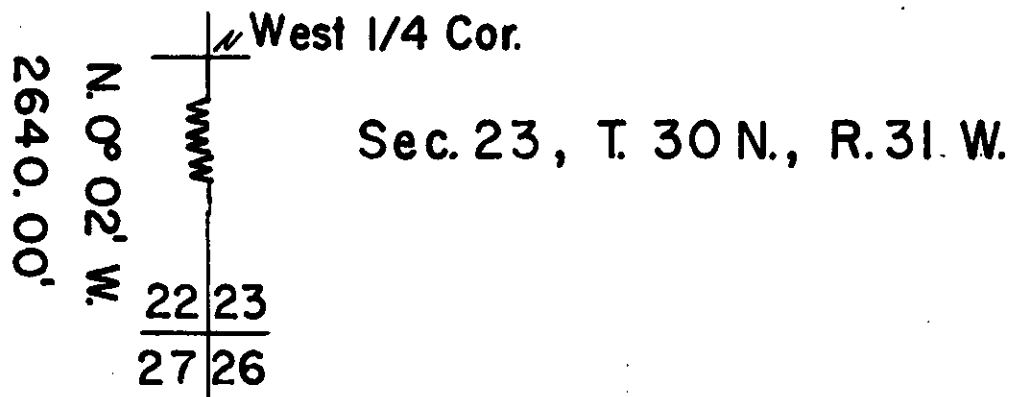
The wood post for the West Quarter corner of Section 23, Township 30 North, Range 31 West of the M.P.M. was in place but both of the original Bearing trees were gone so I made two new bearing trees.

DESCRIPTION OF MONUMENT AND ACCESSORIES ESTABLISHED TO PERPETUATE THE ORIGINAL LOCATION OF THIS CORNER:

Date of work: September
1st 1967

I removed the wood post for the West Quarter corner of Sec. 23, Township 30 North, Range 31 West of the Montana Principal Meridian, Lincoln County, Montana and replace with a 6" x 6" x 20" concrete post with a 1/2" by 9" steel pin copper covered and center punched for the exact corner location which was set upright and flush with the ground. From this corner Bearing Tree bears a 12 inch Pine North 86° 15' West a distance of 15.08 feet and a 12" Pine bears South 20° 45' East a distance of 50.32 feet.

SKETCH, WITH COURSE AND DISTANCE TO ADJACENT CORNERS IF DETERMINED IN THIS SURVEY. (MAY SKETCH OR PASTE REPRODUCTION ON REVERSE SIDE.)



Surveyor's Seal

I, _____
certify that the information shown herein is true and correct.

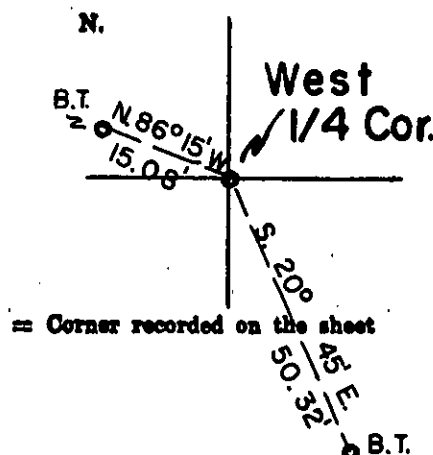
Signature of Ground Party Chief

I, Donald D. Dahl
certify that I have carefully performed or reviewed the work done on the diagrammed corner as reported on this recordation form and approve the same.

Donald D. Dahl
Signature of Surveyor

798-S.
Registration Number

DIAGRAM OF CORNER:



= Corner recorded on the sheet

Office of Clerk and Recorder, County of Lincoln, State of Montana

This "corner record" was filed for record on the 5th day of October 1967, was noted on the cross-index plat and is assigned page No. 82, in book No. 1

Eleanor L. Vaughn, By Ben Walter
County Official Deputy

#82

SEAL OF THE
COUNTY OF LINCOLN
JUL 10 1947
day of
at
3:50 P. M.
A. D. 1947
By *William F. Shuman*
County Clerk
Deputy *Adair*