

CERTIFIED LAND CORNER RECORDATION

DESCRIPTION OF CORNER EVIDENCE FOUND, AND ORIGINAL RECORD (IF KNOWN)

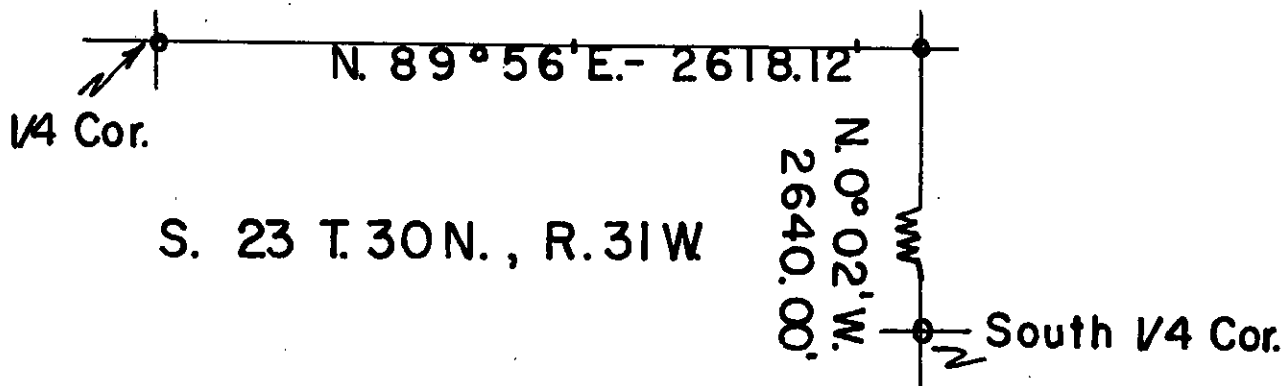
The Northeast corner of the Southwest Quarter (SW $\frac{1}{4}$) of Section 23, Township 30 North, Range 31 West of the M.P.M. Lincoln County, Montana was never placed in the original Government Land Survey.

DESCRIPTION OF MONUMENT AND ACCESSORIES ESTABLISHED TO PERPETUATE THE ORIGINAL LOCATION OF THIS CORNER:

Date of work: June 14, 1967

I set a 6" x 6" x 36" concrete post with a brass cap face flush with the top of this post marked 1/4 cor. with approximately 9" of top of post from the ground level from which a B.T. 9" Fir bears North 78° 45' East a distance of 7.51 feet and a B.T. 14" Firs bears South 26° 30' East a distance of 12.53 feet. Both trees marked B.T. 1/4

SKETCH, WITH COURSE AND DISTANCE TO ADJACENT CORNERS IF DETERMINED IN THIS SURVEY. (MAY SKETCH OR PASTE REPRODUCTION ON REVERSE SIDE.)



Surveyor's Seal

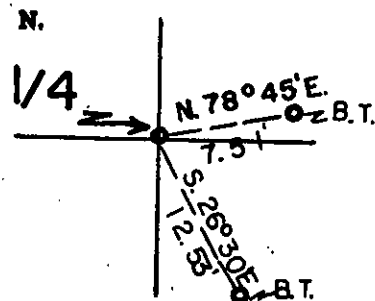
I,
certify that the information shown herein is true and correct.

.....
Signature of Ground Party Chief

I, Donald D. Dahl
certify that I have carefully performed or reviewed the work done on the diagrammed corner as reported on this recordation form and approve the same.

Donald D. Dahl
Signature of Surveyor

DIAGRAM OF CORNER:



= Corner recorded on the sheet

798-S.
Registration Number

Office of Clerk and Recorder, County of Lincoln, State of Montana

This "corner record" was filed for record on the 5th day of October 1967, was noted on the cross-index plat and is assigned page No. 80, in book No. 1

Eleanor L. Vaughn, By Jan Waters
County Official Deputy

#50

STATE OF MONTANA
COUNTY OF LINCOLN

File No. 5th day of

October A. D. 1967

at 3:40 P. M.

Edmond J. Clapp
County Clerk

By Sam Walter Deputy

