

CERTIFIED LAND CORNER RECORDATION

Center of Section 34 Twp. 30N., R.31W., M.P.M.

DESCRIPTION OF CORNER EVIDENCE FOUND, AND ORIGINAL RECORD (IF KNOWN)

Center of said Section was not previously established in accordance with prescribed procedure.

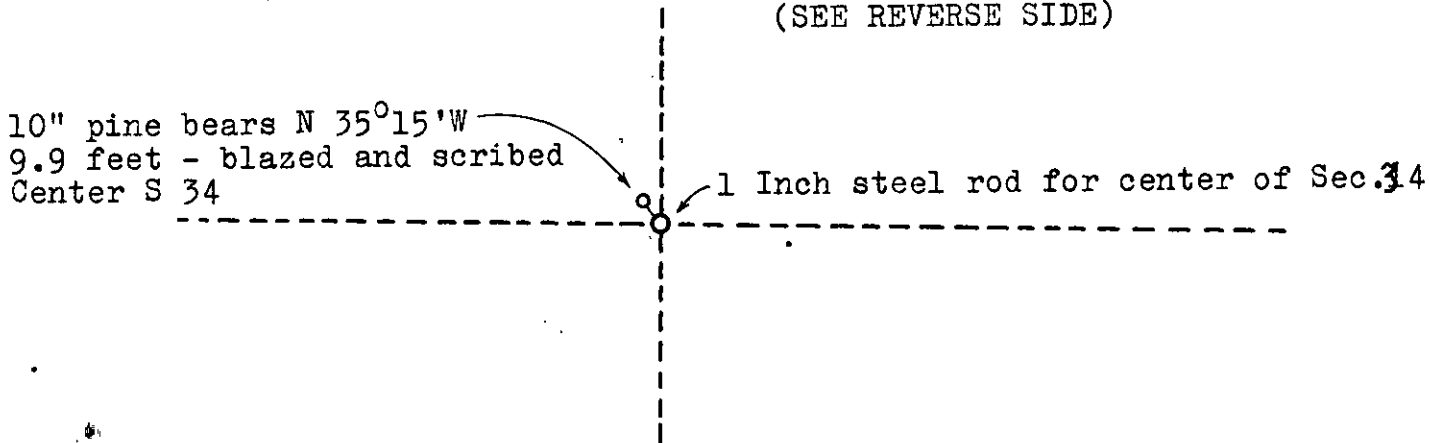
Related 1/4 Corners as follows: South 1/4 Corner, East 1/4 Corner and North 1/4 Corner all monumented, (Std. Brass Tablets), West 1/4 Corner is pipe, accepted as 1/4 Corner

DESCRIPTION OF MONUMENT AND ACCESSORIES ESTABLISHED TO PERPETUATE THE ORIGINAL LOCATION OF THIS CORNER:

At Center of Section 34 set a 1" steel rod in a mound of stone from which a 10" Pine bears N 35°15'W 9.9 feet - blazed and scribed Center S 34

Date of work: 1965

SKETCH, WITH COURSE AND DISTANCE TO ADJACENT CORNERS IF DETERMINED IN THIS SURVEY. (MAY SKETCH OR PASTE REPRODUCTION ON REVERSE SIDE.)



Surveyor's Seal

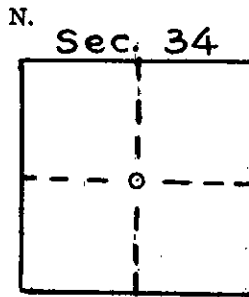
I, J. W. Ninneman, certify that the information shown herein is true and correct.

Signature of J. W. Ninneman, Signature of Ground Party Chief

I, J. W. Ninneman, certify that I have carefully performed or reviewed the work done on the diagrammed corner as reported on this recordation form and approve the same.

Signature of J. W. Ninneman, Signature of Surveyor

DIAGRAM OF CORNER:



o = Corner recorded on the sheet T. 30N., R. 31W.

Montana 534 S.E. Registration Number

Office of Clerk and Recorder, County of Lincoln

This "corner record" was filed for record on the 4th day of April 1966, was noted on the cross-index plat and is assigned page No. 49, in book No. 1

ELEANOR L. VAUGHN, County Official

STATE OF MONTANA
 COUNTY OF LINCOLN
 Filed this 4th day of
April A. D. 1966
 at 11:15 M.
C. Leonard J. Laughlin
 County Clerk.
Mac Hatten
 Deputy

