

INSTRUCTIONS

1. Original and/or subsequent record used to evaluate the corner position.
2. Description of evidence found, note discrepancies in the record, state method of establishing lost or obliterated corners.
3. Description of monument and accessories set to perpetuate the corner position.
4. Sketch of corner, show all pertinent data which can best be shown in a sketch example, corner marking, topography ties, position of accessories, etc.
5. Certification must be signed and sealed by Land Surveyor registered in the State of Montana.
6. Fill in Cross Index & Section Diagram at bottom of sheet.

CERTIFIED CORNER RECORDATION

Corner 1/4 3/10 T. 30N R. 31W Lincoln County
P.M.M.

1. Original Record

Set a post 3 ft. long, 3 ins. square, 24 ins. in the ground, for 1/4 Sec. Cor., marked 1/4 S. on N. face; from which:

A fir 12 ins. diam. bears S89-3/4°E, 32 lks. dist. marked 1/4 SBT.

A fir 20 ins. diam. bears N83-1/4°W, 110 lks. dist. marked 1/4 SBT.

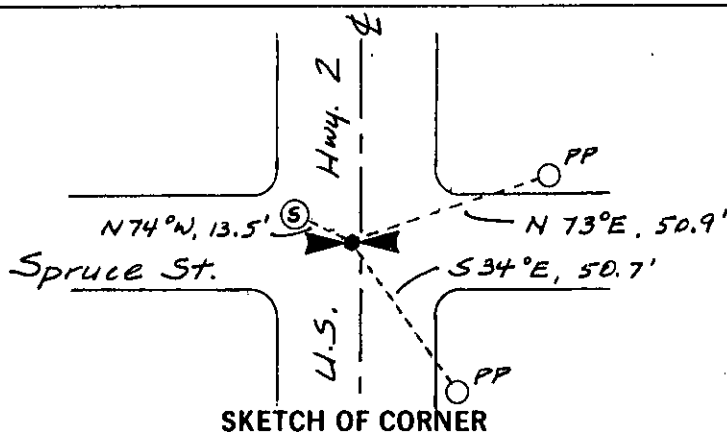
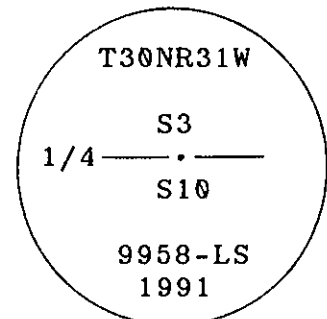
2. No Evidence Found3. CORNER REESTABLISHMENT

At a single proportional position between found NE & NW corners of Section 10, set a 5/8" rebar with standard 3-1/4" aluminum cap, marked as shown, 4" below road surface of U.S. Highway 2. Corner falls 3.5 ft. west of highway centerline at intersection with Spruce Street. RP's:

A metal light pole at SE corner of intersection bears S34°E, 50.7 ft. dist.

A wooden powerpole at NE corner of intersection bears N73°E, 50.9 ft. dist.

The center of a manhole cover bears N74°W, 13.5 ft. dist.



CERTIFICATION

I, George Marshall
certify the information shown herein is true and correct.

George Marshall
Signature Ground Party Chief

I, James R. Staples
certify that this Corner Record correctly represents work performed by me or under my direction in compliance with the "Corner Recordation Act" (70-22-101, et seq., M.C.A.).

James R. Staples
Signature of Surveyor & Seal

Date: _____ Reg. No. 9958-LS

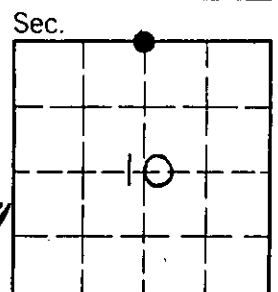
Employer: J.R.S. & Associates

Office of Clerk and Recorder, County of Lincoln. This "corner record" was filed for record on Nov. 20, 1991

was noted on the cross-index plat and is assigned page No. 4592, in

book No. _____

Coral McCummings by Bill Brinkhoff
County Official



Cross Index No. E 15 T. 30N R. 31 W PMM

• - corner this sheet