

CERTIFIED LAND CORNER RECORDATION

1/4 Corner common to Sec. 5 Twp. 30 N., R. 31 W. and Sec. 32 Twp. 31 N., R. 31 W., M.P.M.

DESCRIPTION OF CORNER EVIDENCE FOUND, AND ORIGINAL RECORD (IF KNOWN)

DESCRIPTION OF MONUMENT AND ACCESSORIES ESTABLISHED
TO PERPETUATE THE ORIGINAL LOCATION OF THIS CORNER:

Date of work: November, 1975

SEE REVERSE SIDE

SKETCH, WITH COURSE AND DISTANCE TO ADJACENT CORNERS IF DETERMINED IN THIS SURVEY.
(MAY SKETCH OR PASTE REPRODUCTION ON REVERSE SIDE.)

SEE REVERSE SIDE

Surveyor's Seal

DIAGRAM OF CORNER:

I, Jack H. Ninneman
certify that the information shown herein is true and
correct.

N.

See reverse
Side

Jack H. Ninneman
Signature of Ground Party Chief

I, Jack W. Ninneman
certify that I have carefully performed or reviewed the
work done on the diagrammed corner as reported on this
recordation form and approve the same.

= Corner recorded on the sheet

Jack W. Ninneman
Signature of Surveyor

534 E.S.
Registration Number

Office of Clerk and Recorder, County of Lincoln

This "corner record" was filed for record on the 19th day of January 1976, was noted on the cross-index plat and is
assigned page No. 394, in book No. 1

Eleanor L. Vaughn, M. A. Waters, Deputy
County Official

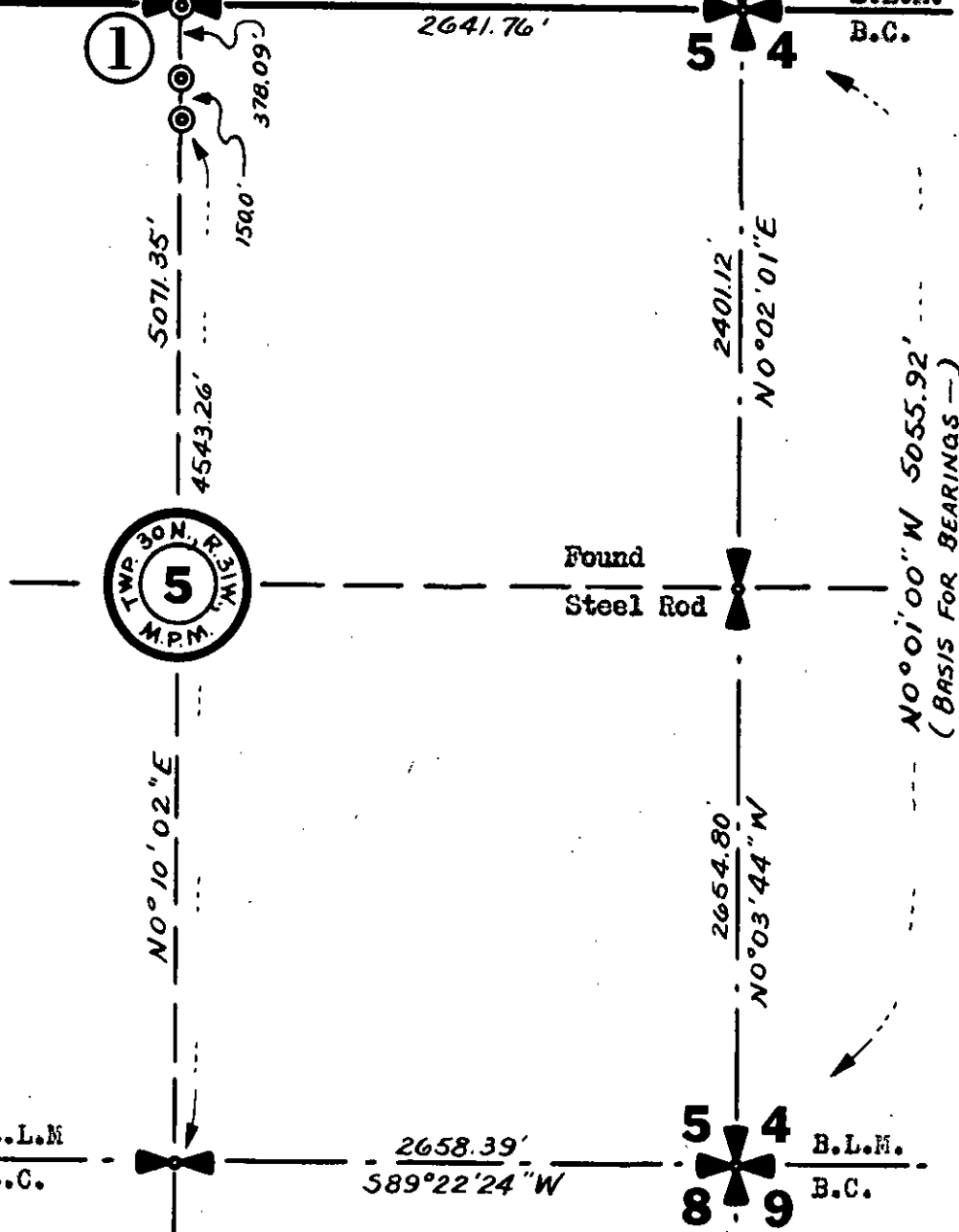
T.30N., R.31W.

TWP. 31N., R. 31W., M.P.M.

B.L.M. 31 32
B.C. 6 5
589°42'14"W
2641.76'

TWP. 30N., R. 31W., M.P.M.

32 33
5 4
589°42'14"W
2641.76'



1. Set A $\frac{1}{2}$ "X24" Steel Rod
With Cap Stamped
J.N. 534 E.S.

- © Set $\frac{1}{2}$ "X24" Steel Rods
With Caps Stamped
J.N. 534 E.S.

- A 10" Larch Bears N 6° W 11.20 Ft.
Scribed $\frac{1}{4}$ S 32 & Posted
- A 12" Fir Bears S 73° 26' E 23.00 Ft.
Scribed $\frac{1}{4}$ S 5 & Posted

At Points Designated On North-South
Centerline Of Subject Section 5
(No B.T.s Scribed Or Posted)