

CERTIFIED LAND CORNER RECORDATION

SECTION 5 TWP. 30 N., R. 31 W., M.P.M.

DESCRIPTION OF CORNER EVIDENCE FOUND, AND ORIGINAL RECORD (IF KNOWN)

NW Corner Brass Cap by B.L.M.  
NE Corner Brass Cap by B.L.M.  
N  $\frac{1}{4}$  Corner not recovered  
East  $\frac{1}{4}$  Corner found a steel rod set by others  
SE Corner Brass Cap by B.L.M.  
South  $\frac{1}{4}$  Corner Brass Cap by B.L.M.

DESCRIPTION OF MONUMENT AND ACCESSORIES ESTABLISHED  
TO PERPETUATE THE ORIGINAL LOCATION OF THIS CORNER:

Date of work: April 1975

Only North-South centerline of Section 5 established by this  
survey plus reestablish N  $\frac{1}{4}$  Corner

SEE DIAGRAM ON REVERSE SIDE

SKETCH, WITH COURSE AND DISTANCE TO ADJACENT CORNERS IF DETERMINED IN THIS SURVEY.  
(MAY SKETCH OR PASTE REPRODUCTION ON REVERSE SIDE.)

SEE DIAGRAM ON REVERSE SIDE

Surveyor's Seal

I, J. H. Ninneman  
certify that the information shown herein is true and  
correct.

*Jack H. Ninneman*  
Signature of Ground Party Chief

I, Jack W. Ninneman  
certify that I have carefully performed or reviewed the  
work done on the diagrammed corner as reported on this  
recordation form and approve the same.

*Jack W. Ninneman*  
Signature of Surveyor

DIAGRAM OF CORNER:

N. See reverse  
Side diagram

= Corner recorded on the sheet

*7661115441515*  
Registration Number

Mt. 534 E.S.

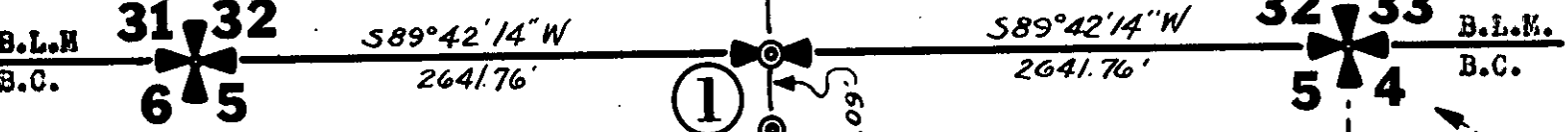
Office of Clerk and Recorder, County of Lincoln

This "corner record" was filed for record on the 28<sup>th</sup> day of July 1975, was noted on the cross-index plat and is  
assigned page No. 384, in book No. 1

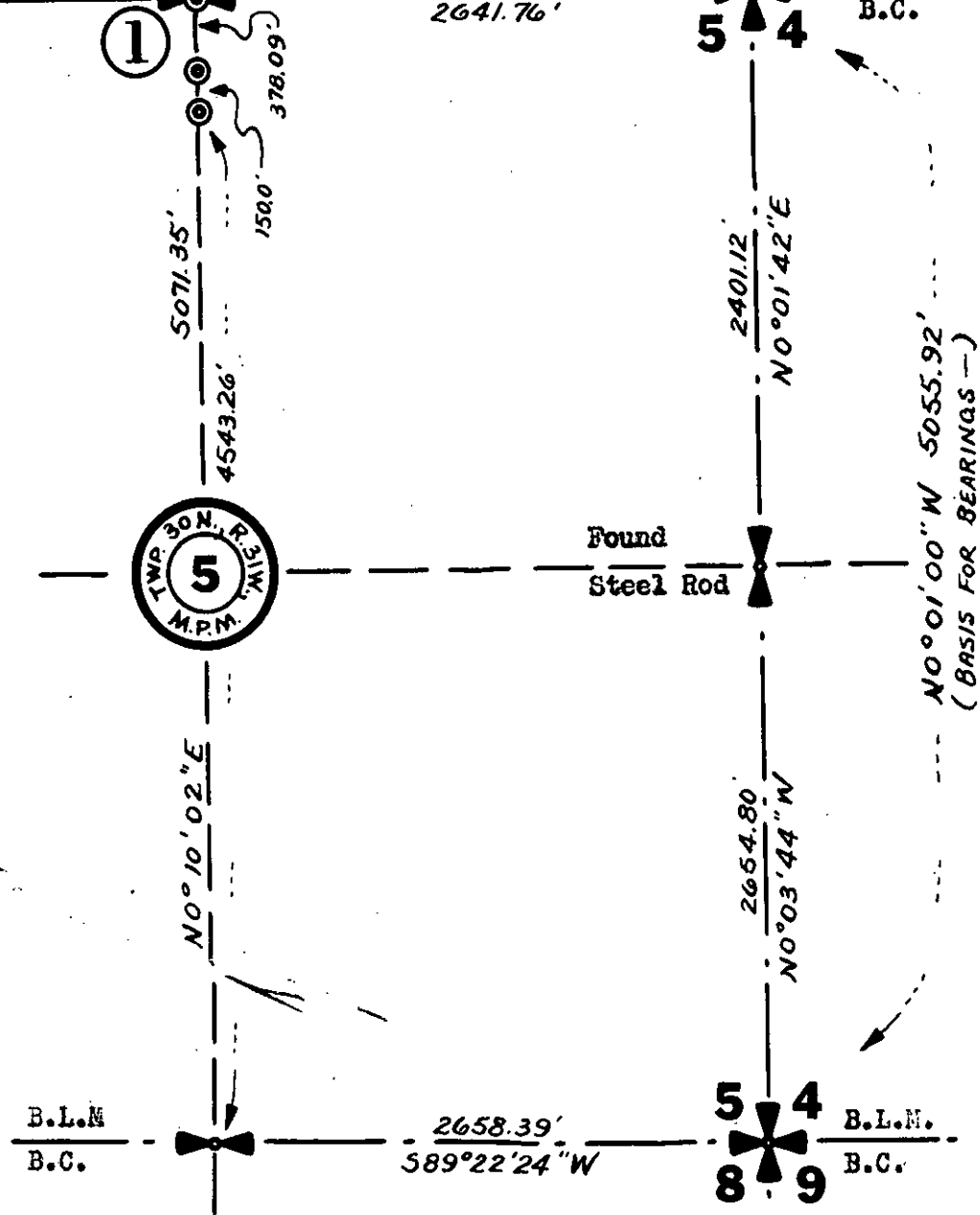
*Eleanor L. Vaughn* *By: Mae Watson*  
County Official Deputy

# T.30N., R.31W.

TWP. 31N., R. 31W., M.P.M.



TWP. 30N., R. 31W., M.P.M.



1. Set A  $\frac{1}{2}$ "X24" Steel Rod  
With Cap Stamped  
J.N. 534 E.S.

- © Set  $\frac{1}{2}$ "X24" Steel Rods  
With Caps Stamped  
J.N. 534 E.S.

- A 10" Larch Bears N 6° W 11.20 Ft.  
Scribed  $\frac{1}{4}$  S 32 & Posted  
A 12" Fir Bears S 73° 26' E 23.00 Ft.  
Scribed  $\frac{1}{4}$  S 5 & Posted

At Points Designated On North-South  
Centerline Of Subject Section 5  
(No B.T.s Scribed Or Posted)