

CERTIFIED LAND CORNER RECORDATION

SECTION 15 TWP. 30 N., R. 31 W., M.P.M.

DESCRIPTION OF CORNER EVIDENCE FOUND, AND ORIGINAL RECORD (IF KNOWN)

NE Corner - capped pipe (by others)
E 1/4 Corner B.C. by B.L.M.
SE Corner B.C. by B.L.M.
S 1/4 Corner B.C. by B.L.M.
SW Corner B.C. by B.L.M.
West 1/4 Corner - not found - not set
NW Corner Brass Cap by B.L.M.
N 1/4 Corner capped pipe (by others)

DESCRIPTION OF MONUMENT AND ACCESSORIES ESTABLISHED TO PERPETUATE THE ORIGINAL LOCATION OF THIS CORNER:

Date of work:
Field 12/74
Records 3/75

Corners established by this survey were not established by original Survey (Interior Corners)

SEE REVERSE SIDE DIAGRAM

SKETCH, WITH COURSE AND DISTANCE TO ADJACENT CORNERS IF DETERMINED IN THIS SURVEY. (MAY SKETCH OR PASTE REPRODUCTION ON REVERSE SIDE.)

SEE REVERSE SIDE DIAGRAM

DIAGRAM OF CORNER:

Surveyor's Seal

I, J. H. Ninneman certify that the information shown herein is true and correct.

J. H. Ninneman Signature of Ground Party Chief

N. See reverse side for diagram

I, Jack W. Ninneman certify that I have carefully performed or reviewed the work done on the diagrammed corner as reported on this recordation form and approve the same.

Jack W. Ninneman Signature of Surveyor

= Corner recorded on the sheet

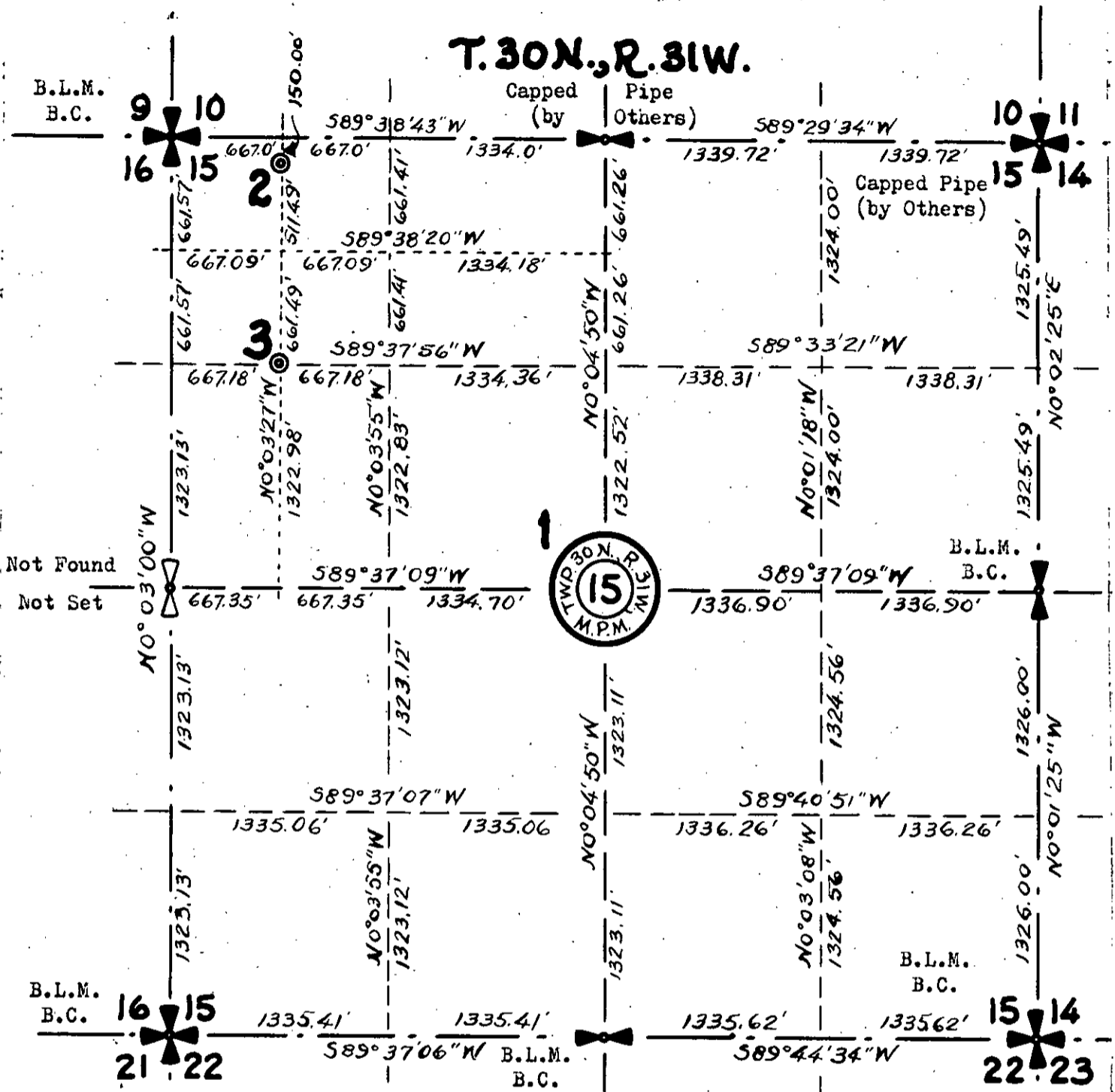
MT. 534 E.S. Registration Number

Office of Clerk and Recorder, County of Lincoln

This "corner record" was filed for record on the 21st day of July 1975, was noted on the cross-index plat and is assigned page No. 383, in book No. 1

Eleanor L. Vaughn, Mer. Watson, Deputy County Official

T. 30N., R. 31W.



1 - A 6"x4"x36" Iron Post by Ira C. Miller 402S in 1958
 is North 9.843 Feet and West 47.798 Feet
 of the True Location of the Center $\frac{1}{4}$ Corner.
 True Center $\frac{1}{4}$ Corner NOT SET.....

- 2 - $\frac{1}{2}$ "x24" Steel Rod with Cap stamped J.N. 534 L.S. (No B.T.S)
- 3 - $\frac{1}{2}$ "x24" Steel Rod with Cap stamped J.N. 534 L.S. (No B.T.S)

TOTAL SURVEY