

CERTIFIED LAND CORNER RECORDATION

SECTION 9 TWP. 30 N., R. 31 W., M.P.M.

DESCRIPTION OF CORNER EVIDENCE FOUND, AND ORIGINAL RECORD (IF KNOWN)

Northwest Corner; North 1/4 Corner; East 1/4 Corner; Southeast Corner; Southwest Corner; West 1/4 Corner - All brass Cap Monuments by G.L.O.

DESCRIPTION OF MONUMENT AND ACCESSORIES ESTABLISHED TO PERPETUATE THE ORIGINAL LOCATION OF THIS CORNER:

Date of work: Sept. 1974

At position for SE 1/16 Corner set a 24" Steel Rod with Poly-vinyl Chloride Cap Stamped JN 534 ES - No BTs.

SKETCH, WITH COURSE AND DISTANCE TO ADJACENT CORNERS IF DETERMINED IN THIS SURVEY. (MAY SKETCH OR PASTE REPRODUCTION ON REVERSE SIDE.)

SEE OTHER SIDE

Surveyor's Seal

I, Jack H. Ninneman certify that the information shown herein is true and correct.

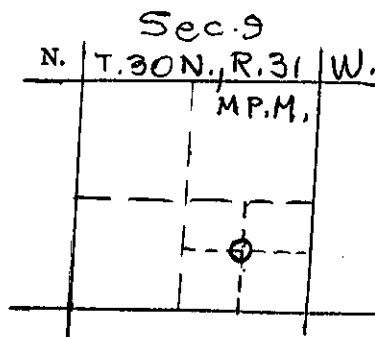
Jack H. Ninneman

Signature of Ground Party Chief

I, Jack W. Ninneman certify that I have carefully performed or reviewed the work done on the diagrammed corner as reported on this recordation form and approve the same.

Jack W. Ninneman Signature of Surveyor

DIAGRAM OF CORNER:



○ = Corner recorded on the sheet

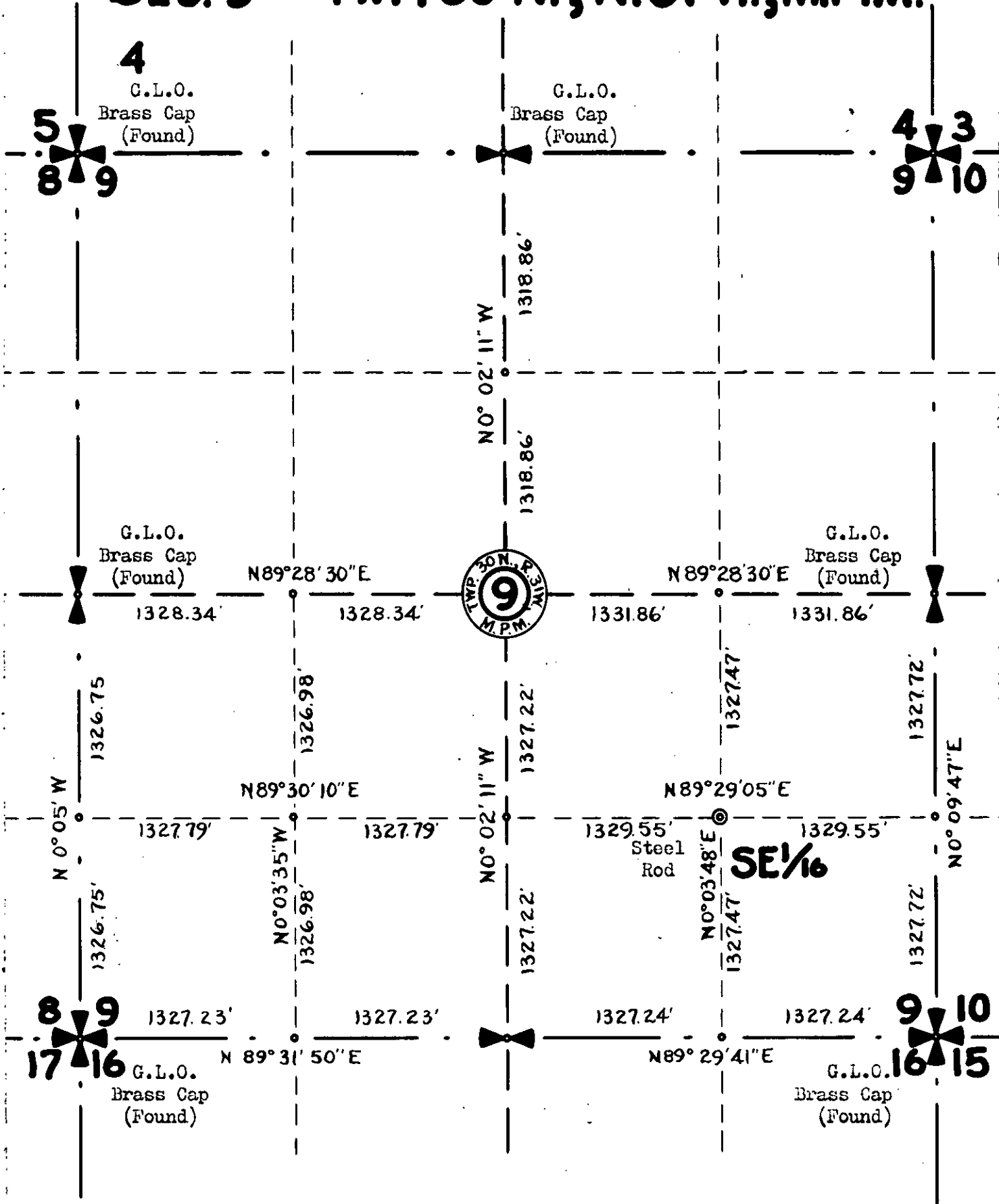
534 E.S. Registration Number

Office of Clerk and Recorder, County of Lincoln

This "corner record" was filed for record on the 27th day of November, 1974, was noted on the cross-index plat and is assigned page No. 376, in book No. 1

Eleanor J. Vaughn, Myahery Davis County Official deputy

SEC. 9 TWP. 30 N., R. 31 W., M.P.M.



SE 1/16 Corner - Set a steel rod with a poly-vinyl chloride cap stamped J.N. 534 E.S. No B.T.s