

CERTIFIED LAND CORNER RECORDATION

SECTION 23 TWP. 30 N., R. 31 W., M.P.M.

DESCRIPTION OF CORNER EVIDENCE FOUND, AND ORIGINAL RECORD (IF KNOWN)

Not previously set.

DESCRIPTION OF MONUMENT AND ACCESSORIES ESTABLISHED TO PERPETUATE THE ORIGINAL LOCATION OF THIS CORNER:

Date of work: Dec 1971

Set a steel pin in fence line. No trees available.

SKETCH, WITH COURSE AND DISTANCE TO ADJACENT CORNERS IF DETERMINED IN THIS SURVEY. (MAY SKETCH OR PASTE REPRODUCTION ON REVERSE SIDE.)

1/4 cor "T" bar by others

C 1/16 N pipe previously recorded

C 1/4 Brass cap in concrete post set by Dahl

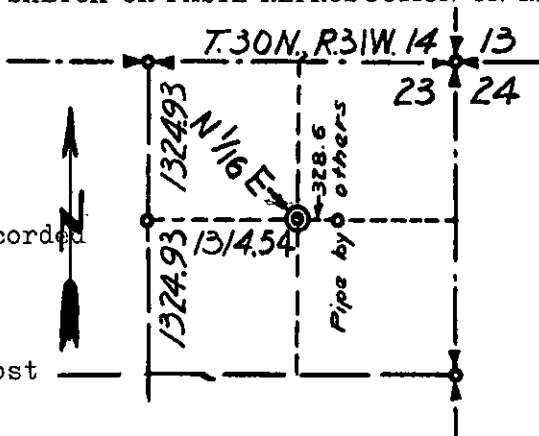


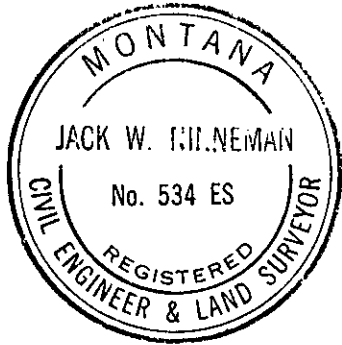
DIAGRAM OF CORNER:



N 1/16 E

= Corner recorded on the sheet

Surveyor's Seal



I, Jack H. Ninneman
certify that the information shown herein is true and correct.

Jack H. Ninneman
Signature of Ground Party Chief

I, Jack W. Ninneman
certify that I have carefully performed or reviewed the work done on the diagrammed corner as reported on this recordation form and approve the same.

Jack W. Ninneman
Signature of Surveyor

Mont. 534 ES
Registration Number

Office of Clerk and Recorder, County of Lincoln

This "corner record" was filed for record on the 14th day of January 1972, was noted on the cross-index plat and is assigned page No. 256, in book No. 1

Gleason L. Vaughan by *Betty Strickland*
County Official Deputy