

- 1. Original and (a) subsequent record used to evaluate the corner position
- 2. Description of monument found, note discrepancies in the record, state method of establishing lost or obliterated corners
- 3. Description of monument and accessories set to perpetuate the corner position
- 4. Sketch of corner, show all pertinent data which can best be shown in a sketch example, corner marking, topography ties, position of accessories, etc.
- 5. Certification must be signed and sealed by Registered Land Surveyor in State of Montana
- 6. Fill in Cross Index & Section Diagram at bottom of sheet.

CERTIFIED CORNER RECORDATION

Corner CN 1/16, S33 T. 30N R. 31W P.M.M. LINCOLN County
 Date of Work: October 15, 1982

I. 1973 BLM Record; Set an Iron post, 28 ins. long, 2 1/2 ins. diam., 22 ins. in the ground, in a collar of Stone, with Brass cap MKD: T30N. R31W.

S33
 CN1/16
 1973

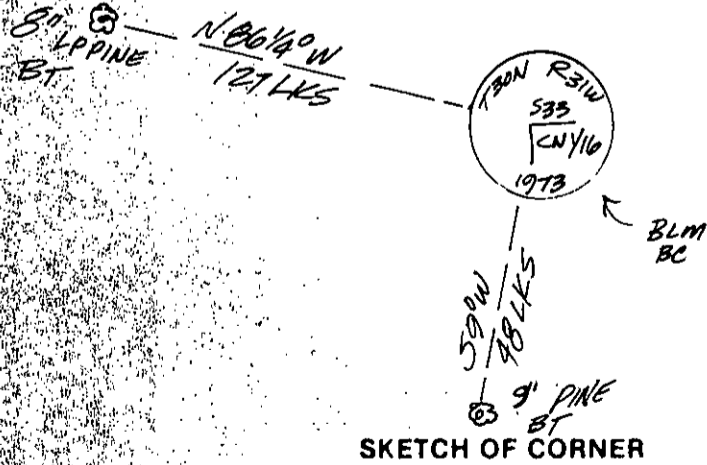
From which:

1. A Pine, 6 ins. diam., bears S. 9° W., 48 LKS dist., MKD: CN 1/16 S.33 BT.
2. A Pine, 6 ins. diam., bears N. 86 1/4° W., 127 LKS dist., MKD: CN 1/16 S.33 BT.

II. 1982, Found 2 1/2 ins. diam., Iron post with Brass cap, Per BLM Record.

1. A 9 ins. L.P. Pine bears (S.S.W., 48 LKS BLM 8/73.)
2. A 8 ins. L.P. Pine bears (W.N.W., 127 LKS BLM 8/73.)

III. I painted RED bands around bearing trees about head high, painted the corner monument, Piled some stones around the pipe, hung an attention sign on a railroad tie fence corner post near the corner.



SKETCH OF CORNER

CERTIFICATION

1. GERALD E. BUNTON
 certifies the information shown herein as true and correct.
 Signature Ground Party Chief

2. MELVIN D. LAUTEREN
 certifies that this Corner Record correctly represents work performed by me or under my direct supervision in compliance with the "Corner Record Act" (70-22-101 M.C.A.)
 Signature of Surveyor & Seal

Date: 10-15-82 Reg. No. 4232-3
 Employer: KOTENAI ENGINEERING INC.

Office of Clerk and Recorder, County of LINCOLN. This "corner record" Sec: 33
 was filed for record on the 17th day of NOV. 1982, was noted on the cross-index plat and
 is assigned page No. _____, in book No. 2067 Eleanor L. Vaughn by Betty L. Conces
 County Official deputy

Cross Index to W-11 130 R 31 P.M.M.



• corner this sheet