

CERTIFIED LAND CORNER RECORDATION

DESCRIPTION OF CORNER EVIDENCE FOUND, AND ORIGINAL RECORD (IF KNOWN)

Section 25 Township 30 N., R. 31 W., M.P.M.
Corner # 2 Standard Brass Cap Monument By BLM
Corner # 7 Standard Brass Cap Monument By BLM

DESCRIPTION OF MONUMENT AND ACCESSORIES ESTABLISHED
TO PERPETUATE THE ORIGINAL LOCATION OF THIS CORNER:

Completed
Date of work: Dec. 1969

See Sketch attached on other side

SKETCH, WITH COURSE AND DISTANCE TO ADJACENT CORNERS IF DETERMINED IN THIS SURVEY.
(MAY SKETCH OR PASTE REPRODUCTION ON REVERSE SIDE.)

See Sketch attached on other side

DIAGRAM OF CORNER:

Surveyor's Seal

I, Jack H. Ninneman
certify that the information shown herein is true and correct.

N.

Jack H. Ninneman
Signature of Ground Party Chief

I, Jack W. Ninneman
certify that I have carefully performed or reviewed the work done on the diagrammed corner as reported on this recordation form and approve the same.

Jack W. Ninneman
Signature of Surveyor

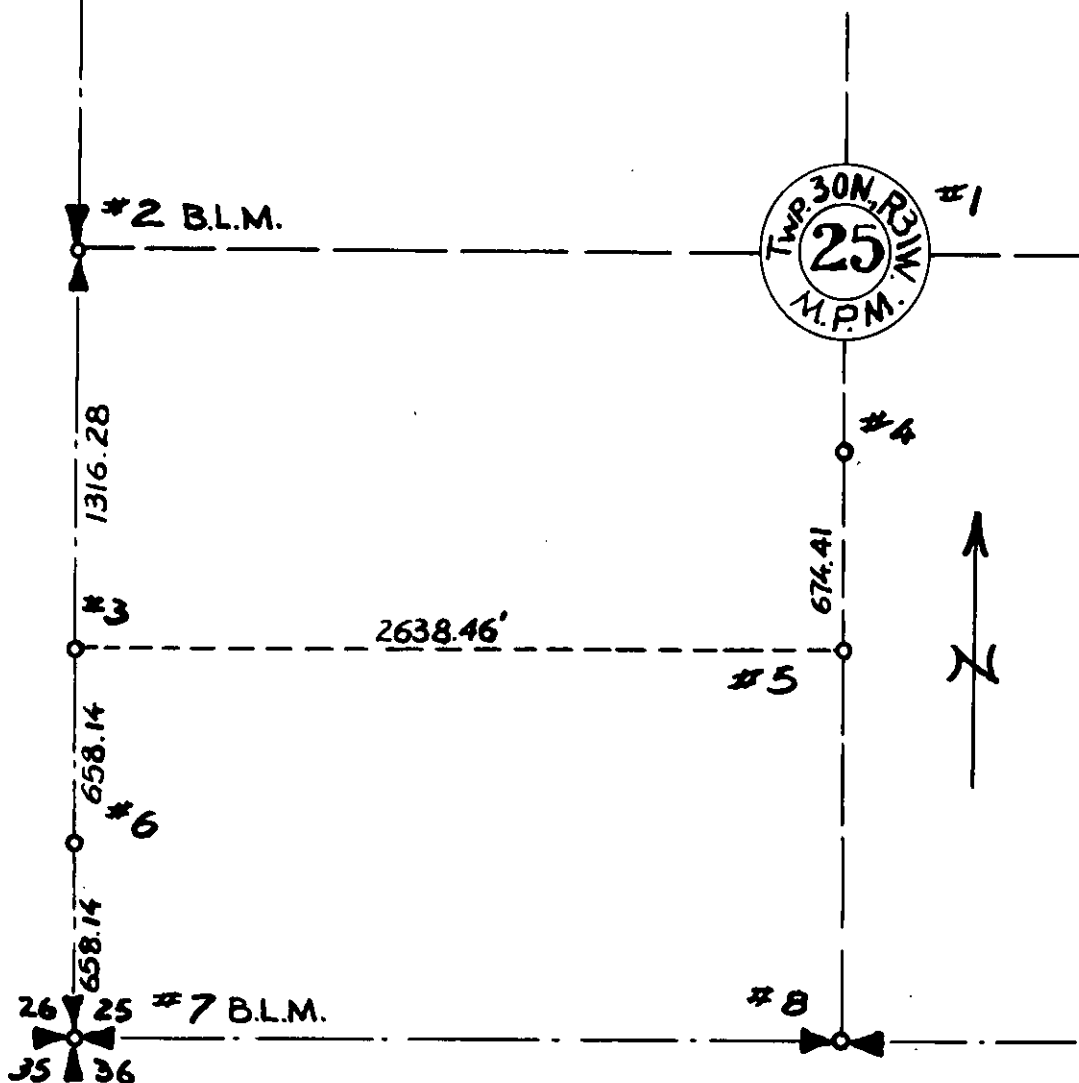
= Corner recorded on the sheet

Montana 534 ES
Registration Number

Office of Clerk and Recorder, County of Lincoln

This "corner record" was filed for record on the 24th. day of February 1970, was noted on the cross-index plat and is assigned page No. 175, in book No. 1

ELEANOR L. VAUGHN, By: *Mrs. Watson*
County Official Deputy



Corner # 1 Steel Rod Set in 1961

Corner # 3 Set Steel Pin from which an 8" Pine Bears N 61°W 5.5 Ft.
Scribed S 1/16 BT Posted a 10" Pine Bears N 49°E 6.7 Ft. Scribed
S 1/16

Corner # 4 Set a Steel Pin for NE Corner of Pinewood Village
(Plat on file at Lincoln County Courthouse).

Corner # 5 Set a Steel Pin for SE Corner of Pinewood Village

Corner # 6 Set a Steel Pin

Corner # 8 Pipe By Others