

4

CERTIFIED LAND CORNER RECORDATION

DESCRIPTION OF CORNER EVIDENCE FOUND, AND ORIGINAL RECORD (IF KNOWN)

Sec. 35 Twp. 30 N., R. 31 W., M.P.M.
Cor. # 1 Standard Brass Cap Monument By BLM
Cor. # 3 Standard Brass Cap Monument By BLM
Cor. # 11 Standard Brass Cap Monument By BLM
Cor. # 16 Standard Brass Cap Monument By BLM
Cor. # 17 Standard Brass Cap Monument By BLM
Cor. # 18 Standard Brass Cap Monument By BLM
Cor. # 19 Standard Brass Cap Monument By BLM

DESCRIPTION OF MONUMENT AND ACCESSORIES ESTABLISHED
TO PERPETUATE THE ORIGINAL LOCATION OF THIS CORNER:

Completed
Date of work: Dec. 1969

See Sketch on other side Attached

SKETCH, WITH COURSE AND DISTANCE TO ADJACENT CORNERS IF DETERMINED IN THIS SURVEY.
(MAY SKETCH OR PASTE REPRODUCTION ON REVERSE SIDE.)

See Sketch on other side Attached

Surveyor's Seal

I, Jack H. Ninneman
certify that the information shown herein is true and correct.

Jack H. Ninneman
Signature of Ground Party Chief

I, Jack W. Ninneman
certify that I have carefully performed or reviewed the work done on the diagrammed corner as reported on this recordation form and approve the same.

Jack W. Ninneman
Signature of Surveyor

DIAGRAM OF CORNER:

N.

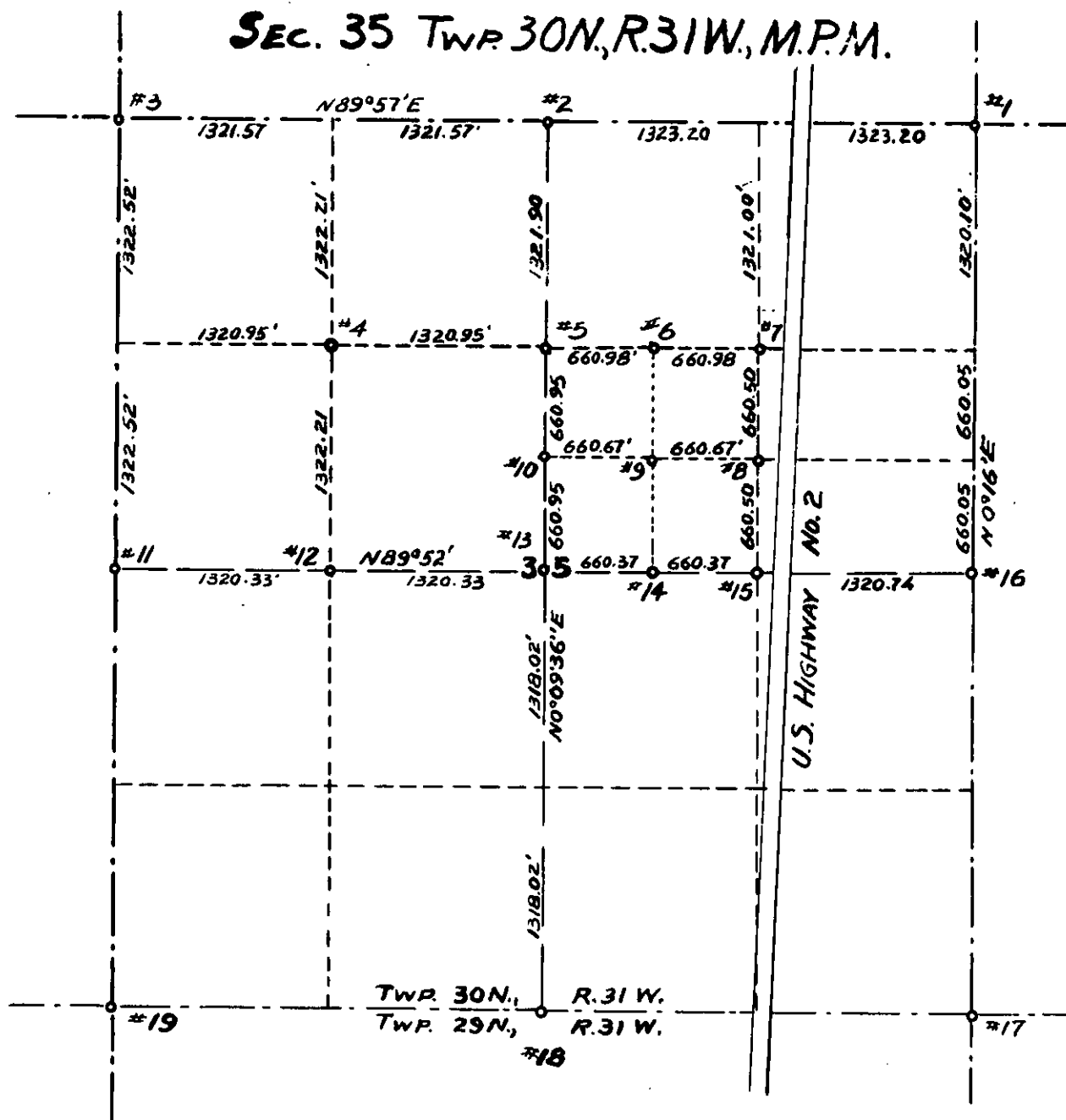
= Corner recorded on the sheet

Montana 534 ES
Registration Number

Office of Clerk and Recorder, County of Lincoln

This "corner record" was filed for record on the 24th. day of February 1970, was noted on the cross-index plat and is assigned page No. 174, in book No. 1

ELEANOR L. VAUGHN, By: *Mac Watson*
County Official Deputy



Cor. # 4 Set a Steel Pin from which a 12" Aspen Bears N 29°W 62.3 Ft. Scribed
N 1/16W Posted a 10" Aspen Bears S 45°W 76.3 Ft. Scribed 1/16 Posted

Cor. # 6 Set a Steel Pin

Cor. # 8 Set Steel Pin in Fence Line

Cor. # 9 Set Steel Pin

Cor. # 10 Set Steel Pin

Cor. # 12 Set a Steel Pin from which a 14" Cottonwood Bears N 85°30'W 32.1 Ft.
Scribed C 1/16W Posted

Cor. # 13 Set a Steel Pin from which a 12" Pine Bears S 5°08'W 54 Ft. Scribed c $\frac{1}{4}$ Posted
a 14" Fir Bears N 45°07'E 30.7 Ft. Scribed $\frac{1}{4}$ Posted

Cor. # 14 Set a Steel Pin

Cor. # 15 Set a Steel Pin in Fence Line