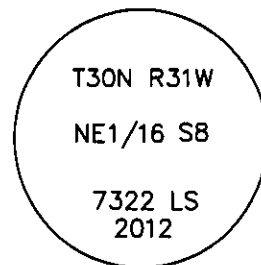


# CERTIFIED CORNER RECORDATION

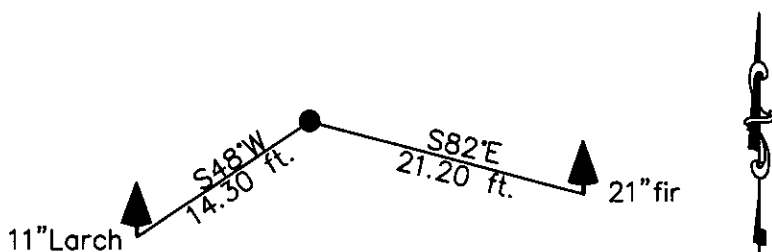
Corner NE 1/16 S8 T. 30 N. R. 31 W. P.M.M. Lincoln County

- I. Record: None
- II. Found: No record monuments found.
- III. Perpetuation: At the corner point, determined by survey, set a 5/8 ins. diam. steel rebar 30 ins. long, 29 ins. in the ground, with a 3 1/4 ins. diam. Aluminum cap marked as shown below from which:
- A Douglas fir, 21 ins. diam., bears S82°E, 21.20 ft. dist., scribed NE 1/16 S8 BT.
- A Western Larch, 11 ins. diam., bears S48°W, 14.30 ft. dist., scribed NE 1/16 S8 BT.
- Painted faces and 6 in. wide red bands to all bearing trees and attached Bearing Tree signs.
- Magnetic declination: 18° East
- Equipment used: Hand compass and loggers tape



NOTE: Refer to "White Pines" Subdivision Plat Lincoln County Records for additional survey information.

Kootenai Surveyors Inc., 314 California Av., Libby, MT. 59923 (406) 293-4354



SKETCH OF CORNER

CERTIFICATION

I, Kelly Rooney  
 certify the information shown herein is true and correct.  
Kelly Rooney  
 Signature Ground Party Chief

I, Alvah F. Hughes  
 certify that this Corner Record correctly represents work performed by me or under my direction in compliance with the "Corner Recordation Act" (70-22-101, et seq., M.C.A.)  
Alvah F. Hughes  
 Signature of Surveyor & Seal

Date: 04/9/2013 Reg. No. 7322LS  
 Employer: Kootenai Surveyors Inc.

Office of Clerk and Recorder, County of Lincoln This "corner

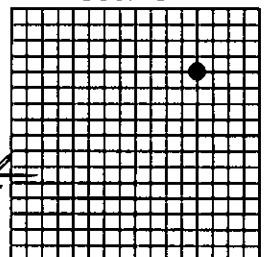
record" was filed for record of 244976 BOOK: CCR CC&R'S PAGE: 12032 Pages: 1  
 was noted on the cross-index: STATE OF MONTANA LINCOLN COUNTY  
 book No. RECORDED: 05/06/2013 2:30 KOI: CC&R'S  
TAMMY D. LAUER CLERK AND RECORDER

FEE: \$0.00 BY: Jeannie Dumas  
 FOR: KOOTENAI SURVEYORS INC. P.O. BOX 393, LIBBY, MT 59923 dumas

Cross Index No. F 08 T. 30N R. 31W P.M., MT

Adopted July 1, 1981, Montana Board of Professional Engineers & Land Surveyors

Sec. 8



• corner this sheet