

CERTIFIED CORNER RECORDATION

Corner CE-SE 1/64 S8 T. 30 N. R. 31 W. P.M.M. Lincoln County

I. Record: None

II. Found: No record monuments found.

III. Perpetuation: At the corner point, determined by survey, set a 5/8 ins. diam. steel rebar 30 ins. long, 29 ins. in the ground, with a 3 1/4 ins. diam. Aluminum cap marked as shown below from which:

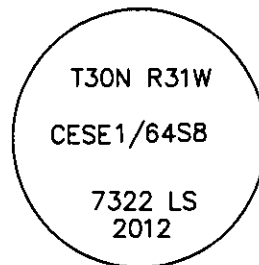
A Western Larch, 12 ins. diam., bears S8°W, 26.30 ft. dist., scribed CESE 1/64 S8 BT.

A Western Larch, 10 ins. diam., bears S85°W, 40.90 ft. dist., scribed CESE 1/64S8 BT.

Painted faces and 6 in. wide red bands to all bearing trees and attached Bearing Tree signs.

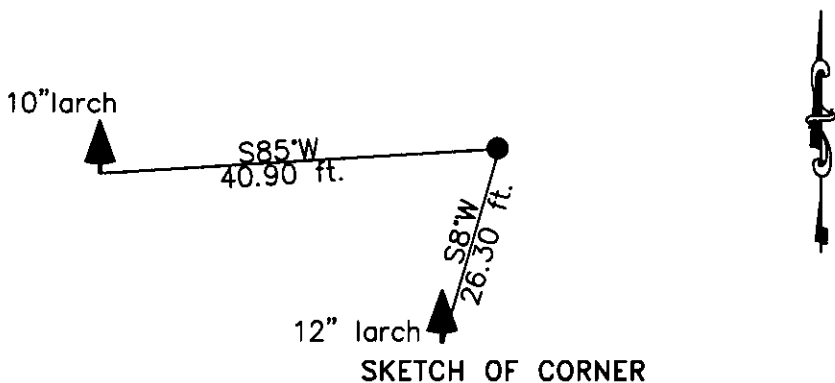
Magnetic declination: 18° East

Equipment used: Hand compass and loggers tape



NOTE: Refer to "White Pines" Subdivision Plat Lincoln County Records for additional survey information.

Kootenai Surveyors Inc., 314 California Av., Libby, MT. 59923 (406) 293-4354



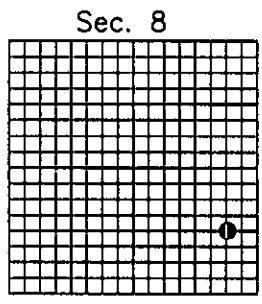
CERTIFICATION

I, Kelly Rooney
certify the information shown herein is true and correct.
Kelly Rooney
Signature Ground Party Chief

I, Alvah F. Hughes
certify that this Corner Record correctly represents work performed by me or under my direction in compliance with the "Corner Recordation Act" (70-22-101, et seq., M.C.A.)
Alvah F. Hughes
Signature of Surveyor & Seal

Date: 04/9/2013 Reg. No. 7322LS
 Employer: Kootenai Surveyors Inc.

Office of Clerk and Recorder, County of Lincoln This "corner record" was filed for record 244974 BOOK: CCR CC&R'S PAGE: 12030 Pages: 1
 STATE OF MONTANA LINCOLN COUNTY
 was noted on the cross-index RECORDED: 05/06/2013 2:20 KOI: CC&R'S
 book No. TAMMY D. LAUER CLERK AND RECORDER
 FEE: \$0.00 BY: *Tammy Lauer*
 FOR: KOOTENAI SURVEYORS INC. P.O. BOX 393, LIBBY, MT 59923



Cross Index No. H 085 T. 30N R. 31W P.M., MT