

CERTIFIED CORNER RECORDATION

Corner 1/4 4 3 T. 30N R. 31W P.M.M. LINCOLN County

1893 GLO Survey by Daniel P. Mumbrue, Book 2825, Page 599

"S 0°05' E on a true line between Sections 3 and 4. Va. 22°30' E"

"36.15 Set a post 3 ft. long, 3 ins. square, 24 ins. in the ground, for 1-4 Sec. Cor., marked 1-4 S. on the W. face; from which a tamarack 12 ins. diam, bears S 55° E. 18 lks., distant marked 1-4 S. B. T. and a tamarack 14 ins. diam, bears N 13.5° W. 22 lks., distant marked 1-4 S. B.T."

1977 Remonumentation by Jack H. Minneman, Reg. No. 4661 S

I set a 1/2" x 24" steel rod with cap stamped "JHM 4661S" as witness corner. See COS #573.

2004 Remonumentation by S. R. Smith, 4740LS

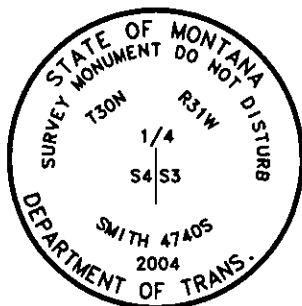
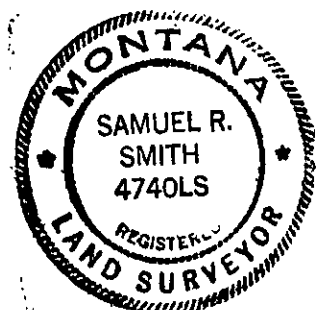
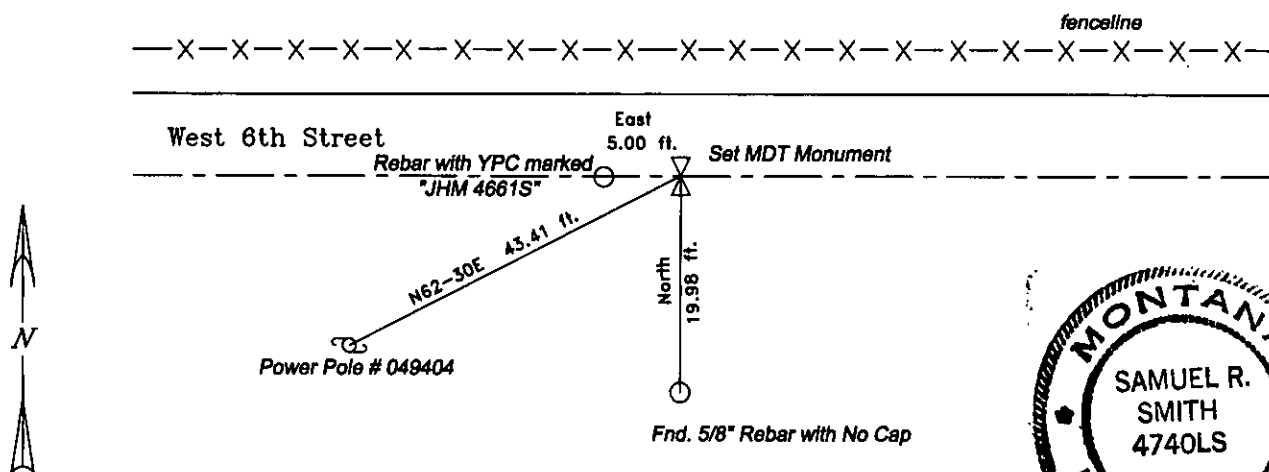
I found 5/8" rebar with yellow plastic cap marked "JHM 4661S" in monument box marked "water", 5 ft. west of actual corner position.

I set a standard MDT aluminum monument, which consists of a 30in. long aluminum pipe with a flared base, in centerline of west 6th street, with a concrete collar as the 1/4 corner. A 5/8" rebar with yellow plastic cap "JHM 4661S" in monument box marked water bears east 5.00 ft. to set monument. A 5/8" rebar with no cap bears North 19.98 ft. to set monument. A power pole #049404 bears

N 62°30' E, 43.41 ft. to set monument.

Bearings listed above in remonumentation section were measured with a hand compass, declination 19°W.

Refer to the Certificate of Survey filed in conjunction with this corner recordation for ties to adjacent section controlling corners.



SKETCH OF CORNER

CERTIFICATION

I, S. R. Smith

certify the information shown herein is true and correct.

Signature Ground Party Chief

I, S. R. Smith

certify that this Corner Record correctly represents work performed by me or under my direction in compliance with the "Corner Recordation Act", (70-22-101, et seq., M.C.A.)

S. R. Smith

Signature of Surveyor & Seal

Date: 1/26/04 Reg. No. 4740LS

Employer: Smith Surveying & Consulting

Office of Clerk and Recorder, County of LINCOLN. This "corner

record" was filed for record 214696 BOOK: CCR CC&R'S PAGE: 11275 Pages: 1

was noted on the cross-index STATE OF MONTANA LINCOLN COUNTY

book No. TAMMY D. LAUER CLERK AND RECORDER

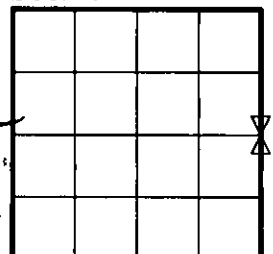
FEE: \$0.00 BY:

TO: SMITH SURVEYING 291 6RD. AVE. E.N., P.O. BOX 7323, KALISPELL,

Cross Index No. C-13 T. 30N R. 31W PMM

Adopted July 1, 1981, Montana Board of Professional Engineers & Land Surveyors

Sec. 4



X corner this sheet