

INSTRUCTIONS

1. Original and/or subsequent record used to evaluate the corner position.
2. Description of evidence found, note discrepancies in the record, state method of establishing lost or obliterated corners.
3. Description of monument and accessories set to perpetuate the corner position.
4. Sketch of corner, show all pertinent data which can best be shown in a sketch example, corner marking, topography ties, position of accessories, etc.
5. Certification must be signed and sealed by Land Surveyor registered in the State of Montana.
6. Fill in Cross Index & Section Diagram at bottom of sheet.

CERTIFIED CORNER RECORDATION

Corner E1/4 Section 8 T. 30N R. 31W P.M.M. Lincoln County

ORIGINAL

GLO - Daniel P. Mumbrue - 1893

40.00 Chains..... Set a post, 3 feet long, 3 inches square, 24" in the ground, for 1/4 Section Corner, marked 1/4 S on west face; from which:

A Fir, 8" diameter, bears N68 1/2° E, 8 links (5.28 feet) distant, marked "1/4 S BT"

A Fir, 8" diameter, bears S54 1/2° W, 13 links (8.58 feet) distant, marked "1/4 S BT"

BLM - 1962

The 1/4 Section Corner of Sections 8 and 9 monumented with an iron post, 2 1/2" diameter, firmly set, projecting 4 inches above ground with brass cap marked as shown below; from which the bearing trees marked in 1962:

A Larch, 8" diameter, bears S55° E, 23 links (15.18 feet) distant, marked "1/4 S9 BT"

FOUND

Found a 3 1/4" brass cap on 2" iron pipe, marked as shown below.

Found two old bearing tree stumps 8-10 feet tall with bearing tree tags.

ESTABLISH

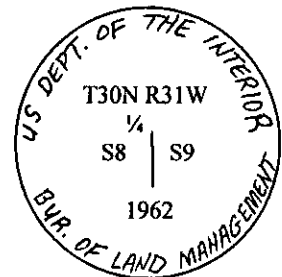
Establish two new accessories for this corner

An 11" pine bears N26° 11' 51" E, 22.0 feet distant, blaze and scribe "1/4 S9 BT"

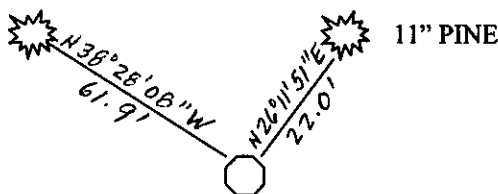
A 15" tamarack bears N38° 28' 08" W, 61.89 feet distant, blaze and scribe "1/4 S8 BT"

Set a steel post 2 feet south of monument.

Bearing tree tags were attached to new bearing trees and blazes painted red.



15" TAMARACK



11" PINE

SKETCH OF CORNER

CERTIFICATION

I, JAMES R. STAPLES

Certify the information shown herein is true and correct.

James R. Staples
Signature Ground Party Chief

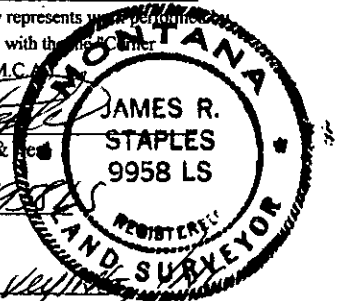
I, JAMES R. STAPLES

certify that this Corner Record correctly represents work performed by me or under my direction in compliance with the Montana Corner Recordation Act" (70-22-101, et seq., M.C.A.)

James R. Staples
Signature of Surveyor & Recorder

Date: 10/16/07 Reg. No. 9958

Employer: TRS Surveying



Office of Clerk and Recorder, County of

This "corner

record" was filed for record 206761 BOOK: CCR CC&R'S PAGE: 11131 Pages: 1

was noted on the cross-index: STATE OF MONTANA LINCOLN COUNTY

RECORDED: 10/16/2007 9:12 KOI: CC&R'S

TAMMY D. LAUER CLERK AND RECORDER

book no. FEE: \$0.00

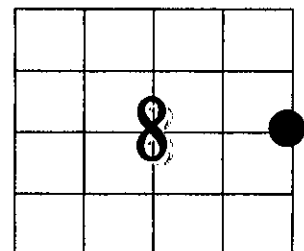
BY: James R. Staples

TO: J.R.S. SURVEYING P.O. BOX 1050, LIBBY, MONTANA 59923

County Official

Cross Index No. G9 T. 30N R. 31W PMM

Adopted July 1, 1981, Montana Board of Professional Engineers & Land Surveyors



• - Corner this sheet