

## INSTRUCTIONS

1. Original and/or subsequent record used to evaluate the corner position.
2. Description of evidence found, note discrepancies in the record, state method of establishing lost or obliterated corners.
3. Description of monument and accessories set to perpetuate the corner position.
4. Sketch of corner, show all pertinent data which can best be shown in a sketch example, corner marking, topography ties, position of accessories, etc.
5. Certification must be signed and sealed by Land Surveyor registered in the State of Montana.
6. Fill in Cross Index & Section Diagram at bottom of sheet.

## CERTIFIED CORNER RECORDATION

Corner CN1/16 Section 8 T. 30N R. 31W P.M.M. Lincoln County

The new corner monument was established as a result of a subdivisional survey of the Section. Said subdivisional survey was made in accordance with methods and procedures contained in the Manual of Surveying Instructions (1973); U.S. Bureau of Land Management.

## ORIGINAL

BLM - 1974

Set an iron post, 28 inches long, 2½ inches diameter, 22" in the ground in a collar of stone with brass cap, marked as shown below; from which:

A Pine, 8" diameter, bears S68¼°E, 57 links (37.62 feet) distant, marked "CN1/16 S8 BT"

## FOUND

Found a 3¼" brass cap on 2½" iron pipe, marked as shown below, 0.4' above ground in rock cairn with a metal "T" post 1' east of corner monument.

## ESTABLISH

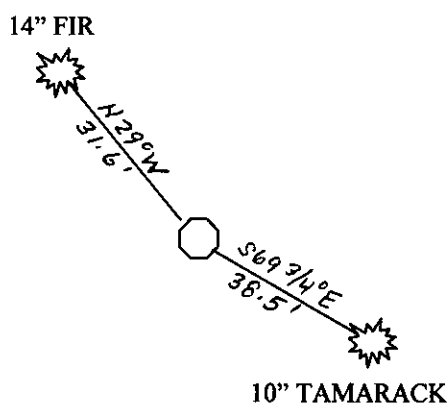
Establish two new accessories for this corner

A 14" fir bears N29°W, 31.6 feet distant, blaze and scribe "CN1/16 S8 BT"

A 10" tamarack bears S69¾°E, 38.5 feet distant, blaze and scribe "CN1/16 S8 BT"

Set a steel post 2.5 feet east of corner monument.

Bearing tree tags were attached to new bearing trees and blazes painted red.



SKETCH OF CORNER

## CERTIFICATION

I, JAMES R. STAPLES  
Certify the information shown herein is true and correct.

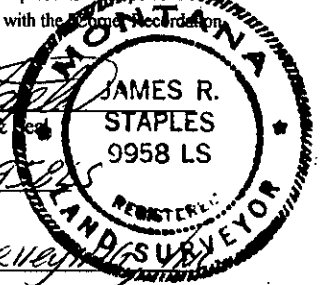
James R. Staples  
Signature Ground Party Chief

I, JAMES R. STAPLES  
certify that this Corner Record correctly represents work performed by me or under my direction in compliance with the Montana Accrual Act" (70-22-101, et seq., M.C.A.)

James R. Staples  
Signature of Surveyor & Seal

Date: 10/16/07 Reg. No. 9958 LS

Employer: JRS Surveying



Office of Clerk and Recorder, County of

. This "corner

record" was filed for record c

206760 BOOK: CCR CC&amp;R'S PAGE: 11130 Pages: 1

was noted on the cross-index

STATE OF MONTANA LINCOLN COUNTY

book no. \_\_\_\_\_

RECORDED: 10/16/2007 9:11 KOI: CC&amp;R'S

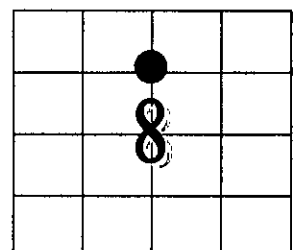
TAMMY D. LAUER CLERK AND RECORDER

FEE: \$0.00

BY: James R. Staples

TO: J.R.S. SURVEYING P.O. BOX 1050, LIBBY, MONTANA 59923

County Official

Cross Index No. F7 T. 30N R. 31W PMM

Adopted July 1, 1981, Montana Board of Professional Engineers &amp; Land Surveyors

• - Corner this sheet