

CERTIFIED CORNER RECORDATION

Corner CS 1/16 S25 T 30 N. R. 31 W. P.M.M. LINCOLN County

I. Record: 1969 Plat No. 2589 Pinewood Village by J.W. Ninneman.
1970 Corner Recordation, Book 1 Page 175 by J.W.Ninneman, "Set a steel pin for S.E. corner of Pinewood Village".

II. Found: No evidence found.

III. Perpetuation: At the calculated position, determined by a section subdivision survey, set a 5/8 in. diam. rebar, 24 ins. long, 22 ins. in the ground with a 3 1/4 in. diam. standard Aluminum cap mkd. as shown below, from which:

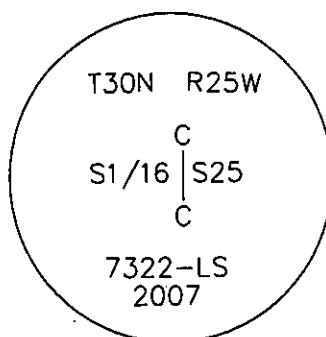
A cottonwood, 5 ins. diam., bears S.9°E., 25.95 ft dist., mkd. X BT.
A pine, 5 ins. diam., bears S.28°W., 44.10 ft. dist., mkd. X BT.

Painted faces and 6 in. wide red bands to all bearing trees and attached Land Survey Monument and Bearing Tree signs.

Set a steel post 3 ft. N. on line.

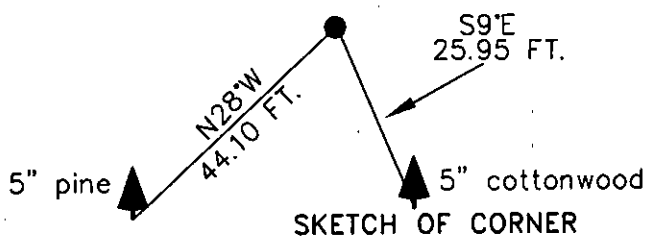
Magnetic declination: 18° East assumed

Equipment used: Hand compass and loggers tape



Kootenai Surveyors Inc., 314 California Av., Libby, MT. 59923 (406) 293-4354

PCTC-EAST SWEDE



CERTIFICATION MONTANA
I, Kelly Rooney
certify the information shown herein is true and correct.
Kelly Rooney HUGHES
Signature Ground Party Chief
I, Alvah F. Hughes
certify that this Corner Record correctly represents work performed by me or under my direction in compliance with the "Corner Recordation Act" (70-224-101, et seq. M.C.A.)
Alvah F. Hughes
Signature of Surveyor & Seal
Date: 06/21/2004 Reg. No. 7322-LS
Employer: Kootenai Surveyors Inc.

Office of Clerk and Recorder, County of Lincoln. This "corner

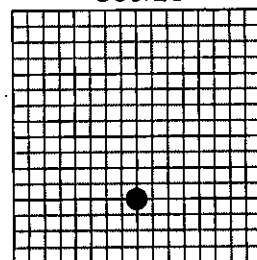
record" was filed for record on 205580 BOOK: CCR CC&R'S PAGE: 11104 Pages: 1
was noted on the cross-index STATE OF MONTANA LINCOLN COUNTY
book No. RECORDED: 08/27/2007 9:10 KOI: CC&R'S

TAMMY D. LAUER CLERK AND RECORDER
FEE: \$0.00 BY: Francis Pennington
TO: KOOTENAI SURVEYORS INC. P.O. BOX 393, LIBBY, MT 59923

Cross Index No. U 23 T. 30N. R. 31W. P.M., MT

Adopted July 1, 1981, Montana Board of Professional Engineers & Land Surveyors

Sec.25



• corner this sheet