

CERTIFIED CORNER RECORDATION

Corner W 1/16 Sec. 2 T 30 N. R. 31 W. P.M.M. LINCOLN County

I. Record: No previous record.

II. Found: No monuments or accessories were found during a corner search.

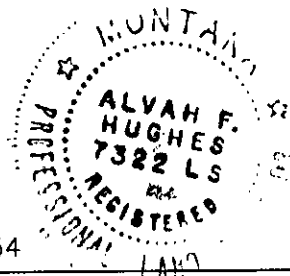
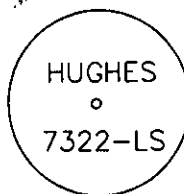
III. Perpetuation: At a point determined by survey from a section subdivision done during Feb. 2004, recorded as COS No. 3276 Lincoln County records, set a 5/8 in. diam. steel rebar 24 ins. long 22 ins. in the ground with a 1 1/4 in. diam. red PVC cap mkd. as show below from which:

A larch, 9 ins. diam., bears N.36°E., 5.40 ft. dist., scribed W 1/16 S2 BT.
a larch, 10 ins. diam., bears S.22°E., 9.30 ft. dist., scribed W 1/16 S11 BT.

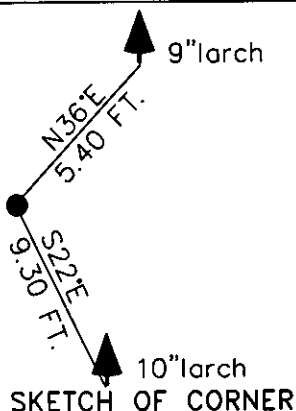
Painted faces and 6 in. wide red bands to all bearing trees and attached Land Survey Monument and Bearing Tree signs.

Magnetic declination: 20° East assumed

Equipment used: Hand compass and loggers tape



Kootenai Surveyors Inc., 314 California Av., Libby, MT. 59923 (406) 293-4354



SKETCH OF CORNER

CERTIFICATION

I, Doug Schuhknecht
certify the information shown herein is true and correct.

[Signature]
Signature Ground Party Chief

I, Alvah F. Hughes
certify that this Corner Record correctly represents work performed by me or under my direction in compliance with the "Corner Recordation Act" (70-22-101, et seq., M.C.A.)

[Signature]
Signature of Surveyor & Seal

Date: 04/26/2004 Reg. No. 7322-LS

Employer: Kootenai Surveyors Inc.

Office of Clerk and Recorder, County of Lincoln. This "corner

record" was filed for recd 181342 BOOK: CCR CC&R'S PAGE: 10738 Pages: 1

was noted on the cross- STATE OF MONTANA LINCOLN COUNTY

book No. RECORDED: 12/17/2004 9:23 KOI: CC&R'S

FEE: \$0.00

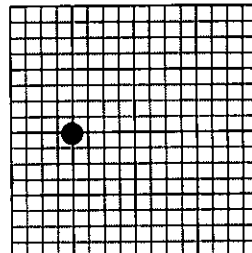
BY: Jeanne Stearns
Deputy

TO: FILED

Cross Index No. C 18 T. 30N. R. 31W. P.M., MT

Adopted July 1, 1981, Montana Board of Professional Engineers & Land Surveyors

Sec. 2



• corner this sheet