

CERTIFIED CORNER RECORDATION

Corner 1/4 35/36 T. 30 N., R. 31 W., P.M.M. Lincoln County

Record :

1893 Township Subdivision by GLO Surveyor D. Mumbrue.

"Set a post 3 ft. long 3 ins. square 24 ins. in the ground for 1/4 Sec. Cor. marked 1/4 S on W. face from which:

A tamarack 30 ins. diam. bears S 47 1/4° E, 72 lks. distant marked 1/4 S. B.T.
A pine 48 ins. diam. bears S 30° W, 29 lks. distant marked 1/4 S. B.T."

1962-1964 BLM Remonumentation by Pittman, Larimer and Grusing.
1972 - BLM Dependent Resurvey of a portion of the Libby Creek Guide Meridian.

"The 1/4 sec. cor. Of Secs. 35 and 36, monumented with an iron post, 2 1/2 ins. diam., firmly set, projecting 4 ins. above ground, in a collar of stone, with brass cap, from which the remains of the original bearing trees

A decayed stump, size indeterminate, bears S. 47 1/2° E., 72 lks. dist., mkd. BT.

and the 1962 bearing objects

A power pole, bears S. 72° E., 133 lks. dist., mkd. X at the base.
A power pole, bears S. 65° W., 89 lks. dist., mkd. X at the base."

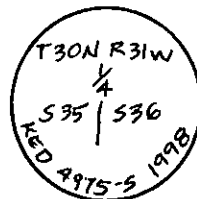
Found Evidence :

During a field search of the area, a 2 1/2 in. diam. iron pipe encased in concrete was found along side the road in the area of the 1962 BLM remonumentation. It appears that the said monument was plowed up during road maintenance activities. Both 1962 bearing objects, which were power poles, have been replaced.

Perpetuation :

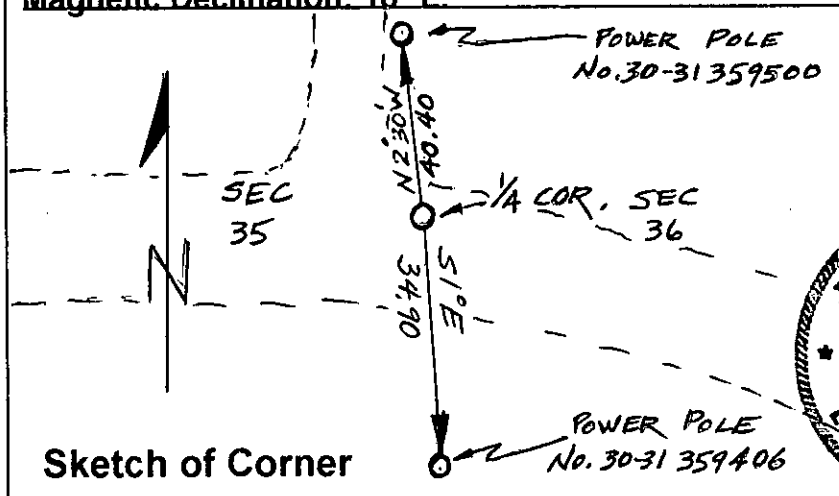
The position for the 1/4 sec. cor. of Secs. 35 and 36 was determined from a closed traverse survey by Davis Surveying, Inc., during Dec. of 1998, being C. of S. No. 2743 on record at the Lincoln County Courthouse. At the computed position, set a 2 1/2 inch diam. alum. pipe 30 ins. long, 6 ins. below the surface of the road, with a 3 1/4 inch diam. alum. cap marked as shown below, from which:

A power pole (No. PPL 30-31 359500) bears N. 2°30' W., 40.40 ft. dist.
A power pole (No. PPL 30-31 359406) bears S. 1° E., 34.90 ft. dist.



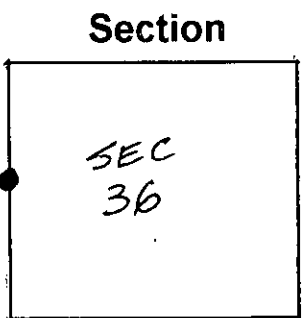
Attached Bearing Tree signs to both bearing objects.

Magnetic Declination: 18° E



CERTIFICATION
I, John Damon
certify the information shown herein is true and correct
John Damon
Signature of Ground Party Chief
I, Ken E. Davis
certify that this Corner Record correctly represents work performed by me or under my direction in compliance with the "Corner Recoraction Act"
(70-22-101, et seq., M.C.A.)
Ken E. Davis
Signature of Surveyor & Seal
Date: 5/12/99 Reg. No. 4975-S
Employer: Davis Surveying, Inc.

Office of Clerk and Recorder, County of Lincoln
This "corner record" was filed for record on May 24, 1999
was noted on the cross-index plat and is assigned page No. 10345
in book No. _____
Carol M. Cumming PPLB
County Official



Cross Index No. 1/4 35/36 T. 30 N., R. 31 W., PMM **• THIS CORNER**