

CERTIFIED LAND CORNER RECORDATION

DESCRIPTION OF CORNER EVIDENCE FOUND, AND ORIGINAL RECORD (IF KNOWN)

The section corner of section's 23-24-25 and 26, T30N-R31W was originally a stone marked with a cross and buried approx. 1' to 2' below the surface of the county road, with one witness tree for a reference.

DESCRIPTION OF MONUMENT AND ACCESSORIES ESTABLISHED TO PERPETUATE THE ORIGINAL LOCATION OF THIS CORNER:

Date of work: August 9, 1963

I hereby certify that the section corner of section's 23-24-25 and 26, T30N R31W is covered by approx. 4 feet of highway embankment on an approach at highway Sta. 147+33 Rt. of centerline. A steel pin is driven into the oil mat directly over the cross on the stone. Also the corner is referenced with 4 steel pins 1" by 30" set at the distances shown with guard stakes at each pin giving distances to the corner.

SKETCH, WITH COURSE AND DISTANCE TO ADJACENT CORNERS IF DETERMINED IN THIS SURVEY. (MAY SKETCH OR PASTE REPRODUCTION ON REVERSE SIDE.)

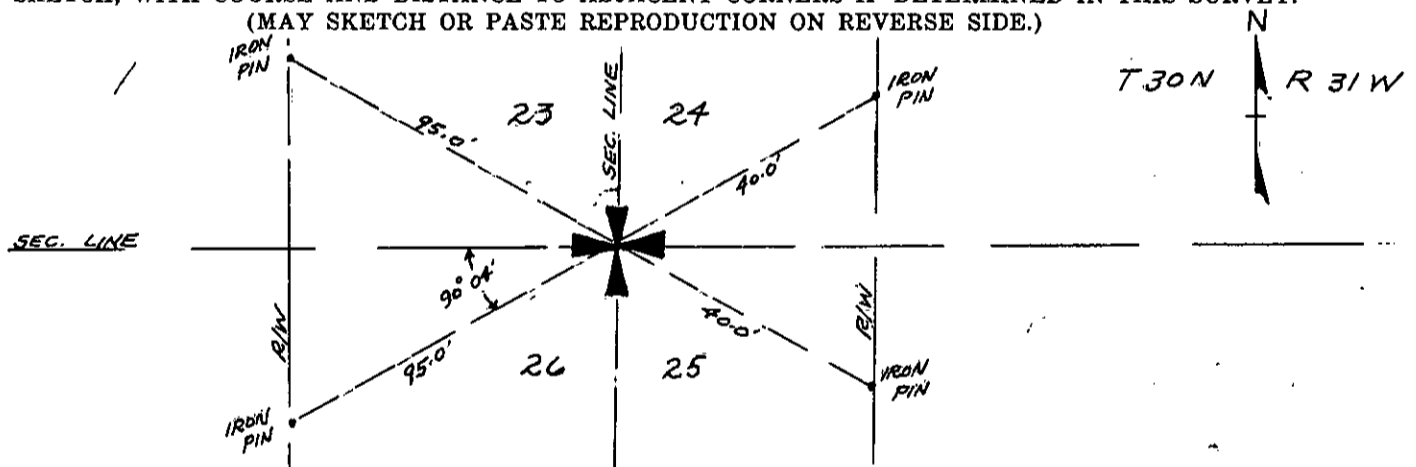


DIAGRAM OF CORNER:

Surveyor's Seal

I, Lorren D. Claridge
certify that the information shown herein is true and correct.

Lorren D. Claridge
Signature of Ground Party Chief

I, DOUGLAS M. BISHOP
certify that I have carefully performed or reviewed the work done on the diagrammed corner as reported on this recordation form and approve the same.

Douglas M. Bishop R-21 = Corner recorded on the sheet
Signature of Surveyor
1834-5
Registration Number

Office of Clerk and Recorder, County of Lincoln

This "corner record" was filed for record on the 19th day of September 19 63, was noted on the cross-index plat and is assigned page No. 1, in book No. 1

M. M. MANSFIELD, Mae Watson
County Official Deputy

STATE OF MONTANA
COUNTY OF LINCOLN

Filed this 19th day of September A. D. 1913

at 3:45 P. M. Wm. M. Applegate
County Clerk

By Wm. M. Applegate
Deputy