

**CERTIFIED LAND CORNER RECORDATION**

DESCRIPTION OF CORNER EVIDENCE FOUND, AND ORIGINAL RECORD (IF KNOWN)

No original evidence.

DESCRIPTION OF MONUMENT AND ACCESSORIES ESTABLISHED  
TO PERPETUATE THE ORIGINAL LOCATION OF THIS CORNER:

Date of work: 9 & 10 1977

I set a 5/8" x 24" rebar tagged MDL 4232-S for W1/16 of Sections 11 and 14, NW1/16, CN1/16, NE1/16 of Section 14, and the N1/16 corner of Sections 13 and 14, all in T30N, R30W, P.M.M., and I make witness monuments as shown on the reverse side of this sheet.

SKETCH, WITH COURSE AND DISTANCE TO ADJACENT CORNERS IF DETERMINED IN THIS SURVEY.  
(MAY SKETCH OR PASTE REPRODUCTION ON REVERSE SIDE.)

See reverse.

Surveyor's Seal



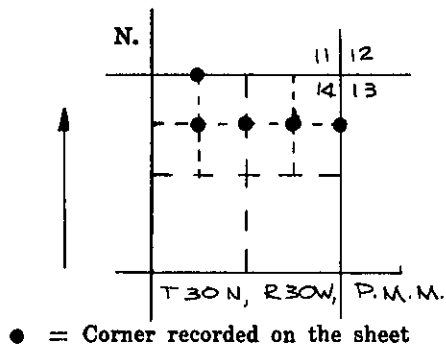
I, Ken Davis  
certify that the information shown herein is true and correct.

*Ken Davis*  
Signature of Ground Party Chief

I, Melvin D. Lauteren  
certify that I have carefully performed or reviewed the work done on the diagrammed corner as reported on this recordation form and approve the same.

*Melvin D. Lauteren*  
Signature of Surveyor

DIAGRAM OF CORNER:

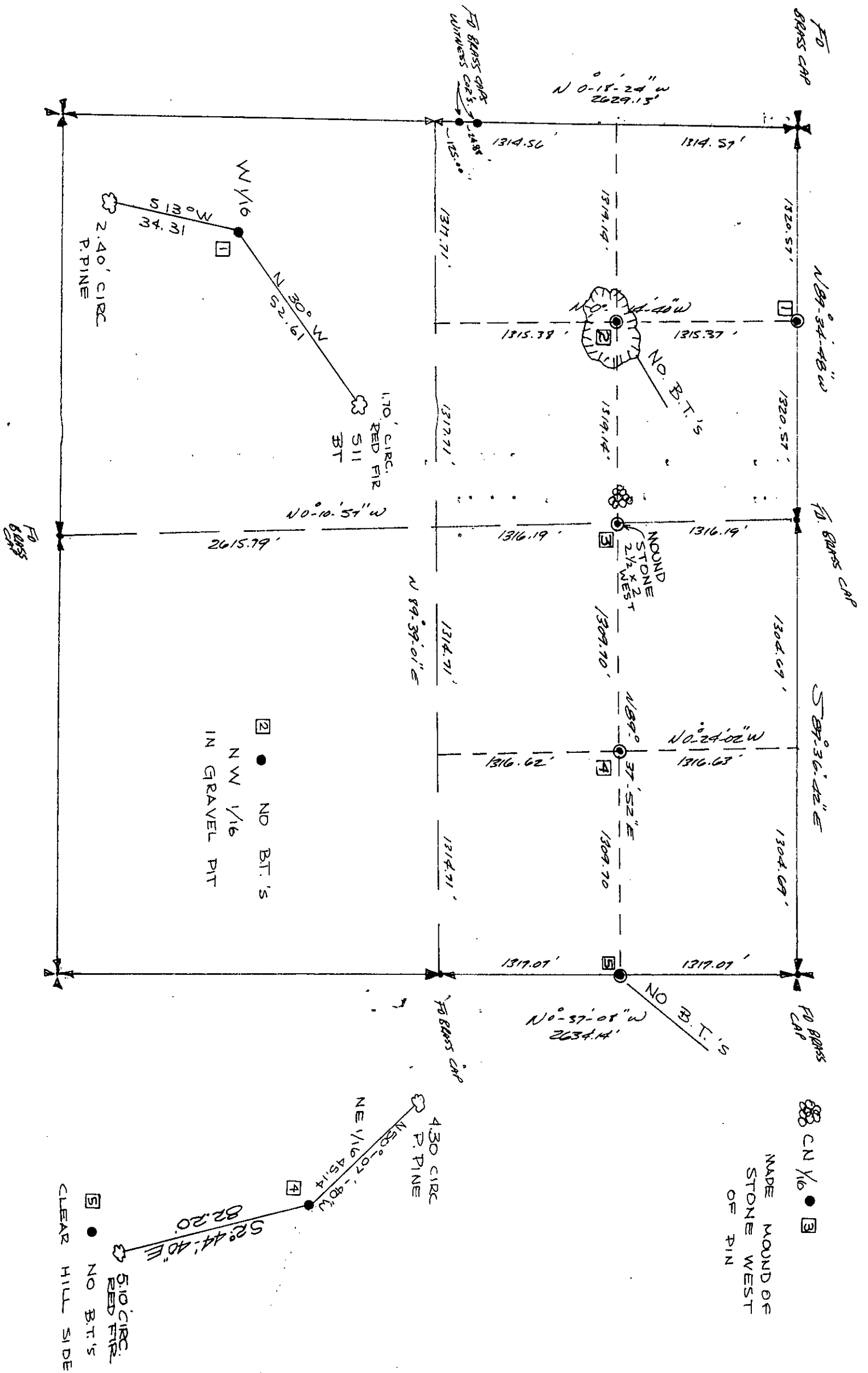


4232-S  
Registration Number

Office of Clerk and Recorder, County of Lauder

This "corner record" was filed for record on the 3<sup>rd</sup> day of March 1978, was noted on the cross-index plat and is assigned page No. 516, in book No. 1

*Eleanor Vaughan by Dorothy Martin*  
County Official



N 0-18-24" W  
2629.15'

WY 1/6  
S 13° W  
34.31  
2.40' CIRC  
P. PINE

1.70' CIRC.  
RED FIR  
S11  
BT

WOODEN  
STONE  
2 1/2 X 2  
WEST

MADE MOUND OF  
STONE WEST  
OF PIN

5.10 CIRC.  
RED FIR  
NO B.T.'S  
CLEAR HILL SIDE

2 ● NO B.T.'S  
NW 1/16  
IN GRAVEL PIT

4.30 CIRC  
P. PINE

WY 1/6  
N 89°-07'-80" W  
45.14  
S 2°-44'-40" E  
82.20

CN 1/16 ● 3