

CERTIFIED LAND CORNER RECORDATION

DESCRIPTION OF CORNER EVIDENCE FOUND, AND ORIGINAL RECORD (IF KNOWN)

WEST 1/4 COR., SEC 31, T30N, R30W, P.M.M.
 FOUND - 1 BT IN SECTION 31, T30N, R30W, P.M.M.
 8" FIR ESCRIBED AND TAGGED.

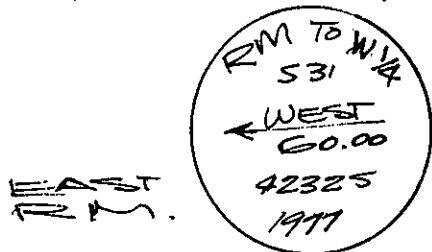
ORIGINAL RECORD: REMON. RECORDS - FD STUMP
 22", 317.00E 70 LKS - FD STUMP 24", N 70°W
 14 LKS. MADE A NEW B.T. FIR 8", S 31°E
 141 LKS S 31 BT. 1964.

NOTE: 1/4 SECTION COR. WAS DESTROYED BY
 ROAD CONSTRUCTION.

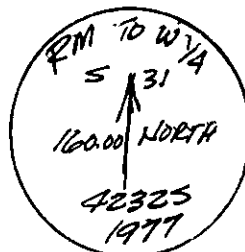
DESCRIPTION OF MONUMENT AND ACCESSORIES ESTABLISHED
 TO PERPETUATE THE ORIGINAL LOCATION OF THIS CORNER:

Date of work: 3-18-77

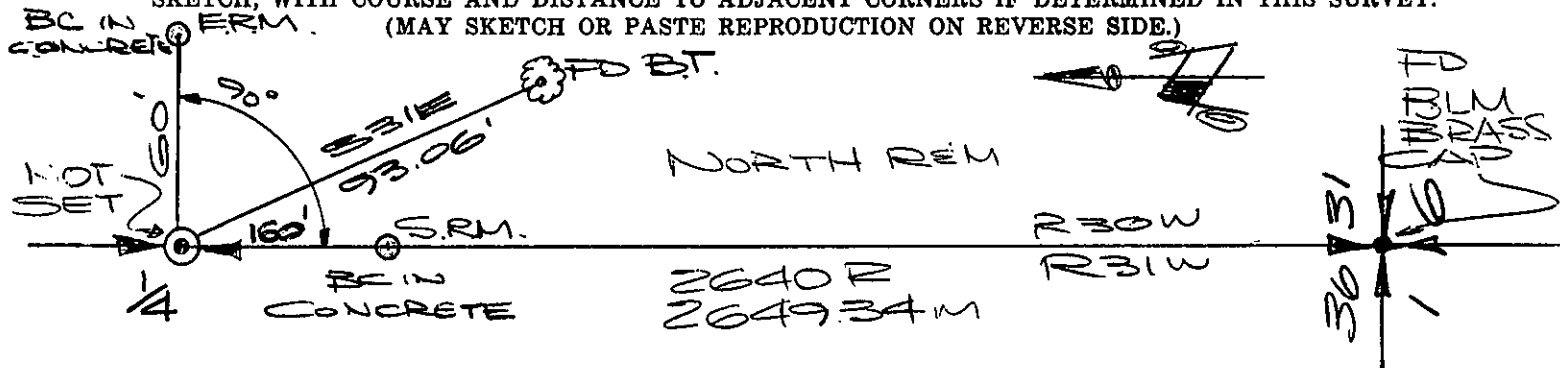
I SET 2 BRASS CAP RM'S AS SHOWN
 ON THE SKETCH BELOW:



SOUTH RM



SKETCH, WITH COURSE AND DISTANCE TO ADJACENT CORNERS IF DETERMINED IN THIS SURVEY.
 (MAY SKETCH OR PASTE REPRODUCTION ON REVERSE SIDE.)



NO SCALE

R = RECORD G.L.O.
 M = MEASURED

Surveyor's Seal



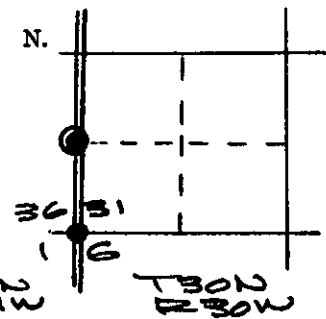
I, MELVIN D. LAUTEREN
 certify that the information shown herein is true and correct.

Melvin D. Lauteren
 Signature of Ground Party Chief

I, MELVIN D. LAUTEREN
 certify that I have carefully performed or reviewed the work done on the diagrammed corner as reported on this recordation form and approve the same.

Melvin D. Lauteren
 Signature of Surveyor

DIAGRAM OF CORNER:



⊙ = Corner recorded on the sheet

WEST 1/4 COR.,
 SEC 31, T30N,
 R30W, P.M.M.

4232 S
 Registration Number

Office of Clerk and Recorder, County of Lincoln

This "corner record" was filed for record on the 24th day of March, 1977, was noted on the cross-index plat and is assigned page No. 489, in book No. 1

Cleaner L. Hughes by Betty Stonebaker
 County Official Deputy