

INSTRUCTIONS

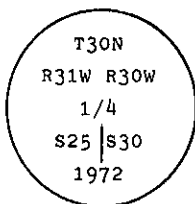
1. Original and/or subsequent record used to evaluate the corner position.
2. Description of evidence found, note discrepancies in the record, state method of establishing lost or obliterated corners.
3. Description of monument and accessories set to perpetuate the corner position.
4. Sketch of corner, show all pertinent data which can best be shown in a sketch example, corner marking, topography ties, position of accessories, etc.
5. Certification must be signed and sealed by Land Surveyor registered in the State of Montana.
6. Fill in Cross Index & Section Diagram at bottom of sheet.

CERTIFIED CORNER RECORDATION

Corner West 1/4 of Sec. 30 T. 30 N. R. 30 W. P.M.M. Lincoln County

- I. 1893 original G.L.O. record by Daniel P. Mumbrue: Set a post with two bearing trees.

1972 B.L.M. dependent resurvey record: Point for the 1/4 sec. cor. of secs. 25 and 30, at proportionate distance; there is no remaining evidence of the original cor. Set an iron post, 28 ins. long, 2 1/2 ins. diam., 23 ins. in the ground, with brass cap mkd.



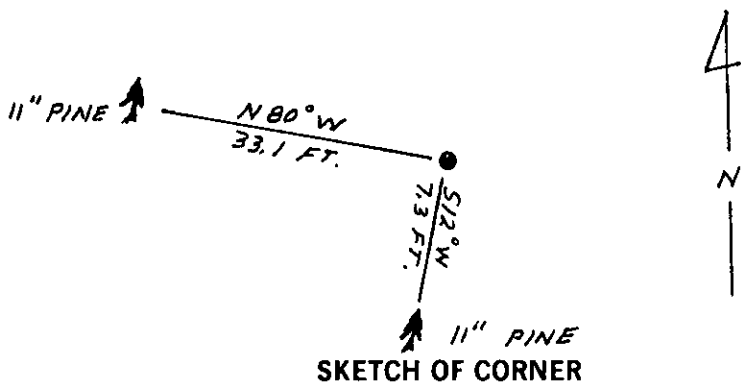
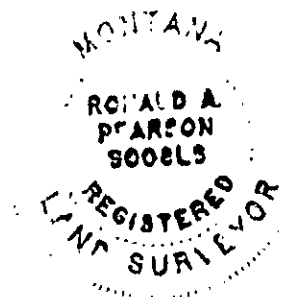
from which

- A pine, 7 ins. diam., bears S 13 1/4° W, 12 lks. (7.92 ft.) dist., mkd. 1/4 S25 BT.
A pine, 8 ins. diam., bears S 82 1/4° W, 55 lks. (36.30 ft.) dist., mkd. 1/4 S25 BT.

- II. Found a 2 1/2 ins. diam. iron pipe, 4 ins. out of the ground, with B.L.M. brass cap mkd. as shown above, from which

- A ponderosa pine, 11 ins. diam., bears S12° W, 7.3 ft. dist., healed face.
A ponderosa pine, 11 ins. diam., bears N80° W, 33.1 ft. dist., healed face.

- III. Painted red bands around the bearing trees and attached Land Survey Monument and Bearing Tree signs. Set a 6 ft. galvanized steel guard post with Land Survey Marker and Property Boundary decals, North, 3 ft.
Magnetic Declination: 20° East.



SKETCH OF CORNER

CERTIFICATION

I, Kevin A. Todd
certify the information shown herein is true and correct.
Kevin A. Todd
Signature Ground Party Chief

I, Ronald A. Pearson
certify that this Corner Record correctly represents work performed by me or under my direction in compliance with the "Corner Recordation Act" (70-22-101, et seq., M.C.A.)

Ronald A. Pearson
Signature of Surveyor & Seal

Date: 11/6/91 Reg. No. 9008 LS

Employer: U.S. FOREST SERVICE

Office of Clerk and Recorder, County of Lincoln. This "corner record" was filed for record on Dec 18, 1991 was noted on the cross-index plat and is assigned page No. 4609, in book No. Coral McCummings by Bill Buehler

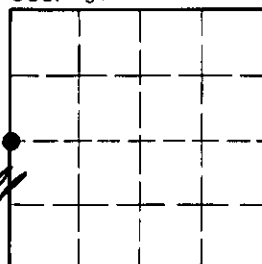
County Official

T-25

30 N 30 W

Cross Index No. T. R. PMM

Sec. 30



• - corner this sheet