

INSTRUCTIONS

1. Original and/or subsequent record used to evaluate the corner position.
2. Description of evidence found, note discrepancies in the record, state method of establishing lost or obliterated corners.
3. Description of monument and accessories set to perpetuate the corner position.
4. Sketch of corner, show all pertinent data which can best be shown in a sketch example, corner marking, topography ties, position of accessories, etc.
5. Certification must be signed and sealed by Land Surveyor registered in the State of Montana.
6. Fill in Cross Index & Section Diagram at bottom of sheet.

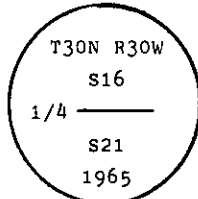
CERTIFIED CORNER RECORDATION

Corner 1/4 Cor. of Secs. 16 & 21 T. 30 N. R. 30 W. P.M.M. Lincoln County

- I. 1904 G.L.O. original record by G. W. Fessenden and R. Y. Lyman: Set a stone monument; marked a fir and tamarack for bearing trees.

1965 B.L.M. remonumentation record by D. G. Lindenberg: "The 1/4 sec. cor. of secs. 16 and 21, monumented with a slate stone, 20x12x8 ins., loosely set, marked 1/4 on the N. side and witnessed by the remains of the original bearing trees. At the corner point

Set an iron post, 30 ins. long, 2 1/2 ins. diam., 26 ins. in the ground, with brass cap mkd.



from which

The original bearing trees:

- A rotted stump, bears N85° E, 21 lks. dist., with fallen log mkd. 1/4 S16 BT. (Record)
- A snag, 5 ins. diam., bears S30° W, 11 lks. dist., mkd. 1/4 S21 BT. (Record S30° W, 7 lks.)

The new bearing trees:

- A larch, 5 ins. diam., bears N8° E, 9 lks. dist., mkd. 1/4 S16 BT.
- A fir, 9 ins. diam., bears S20° E, 45 lks. dist., mkd. 1/4 S21 BT.

Bury the original stone alongside the iron post."

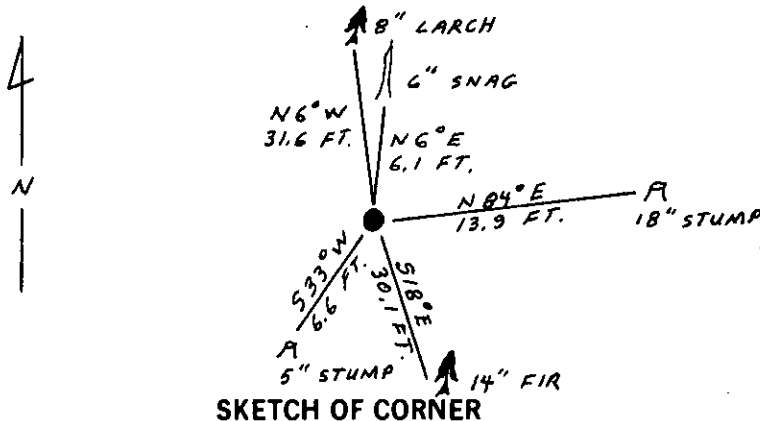
- II. Found an iron post, 2 1/2 ins. diam., 5 ins. above the ground, with a 2 1/4 ins. diam. brass cap mkd. as shown above, from which

- A larch snag, 6 ins. diam., bears N6° E, 6.1 ft. (9 lks.) dist., scribe overgrown.
- A stump, 1 ft. by 18 ins. diam., bears N84° E, 13.9 ft. (21 lks.) dist., no visible scribe on rotten log remains.
- A douglas fir, 14 ins. diam., bears S18° E, 30.1 ft. (45.6 lks.) dist., scribe overgrown.
- A stump, 3 ft. by 5 ins. diam., bears S33° W, 6.6 ft. (10 lks.) dist., mkd. with T.

- III. Established one new bearing tree:

A larch, 8 ins. diam., bears N6° W, 31.6 ft. dist., mkd. 1/4 S16 BT.

Set a 6 ft. galvanized steel guard post with Land Survey Marker and Property Boundary decals, West, 3 ft. Painted red bands around the bearing trees and attached Bearing Tree and Land Survey Monument signs. Magnetic Declination: 21° 30' East.



SKETCH OF CORNER

CERTIFICATION

Gary C. Crismon

I, Gary C. Crismon, certify the information shown herein is true and correct.

Gary C. Crismon
Signature Ground Party

Ronald A. Pearson, REGISTERED SURVEYOR

I, Ronald A. Pearson, certify that this Corner Record correctly represents work performed by me or under my direction in compliance with the "Corner Recordation Act" (70-22-101 et seq., M.C.A.)

Ronald A. Pearson
Signature of Surveyor & Seal

Date: 8/9/90 Reg. No. 9008LS

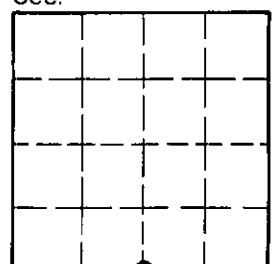
U.S. FOREST SERVICE

Employer: _____

Office of Clerk and Recorder, County of Lincoln. This "corner record" was filed for record on Aug 9, 1990 was noted on the cross-index plat and is assigned page No. 4283, in book No. _____

N-11 30 N 30 W
Cross Index No. _____ T. _____ R. _____ PMM

Sec. 16



• - corner this sheet